

ILLAWARRA SIRE DIRECTORY 2012

Proven Illawarra Sires

OVENSDALE SCARLETS MARCEL



Nasis Code: SCARLET

\$20.00 + GST Per Dose

Rego #: 4167 Y

50% Illawarra



Sire: Marcel Red

Dam: Ovensdale Scarlet 99th - VG88

305D 9,144M 3.7% 342F 3.2% 294P

MGS: Ovensdale Pearls Cass

MGD: Ovensdale Scarlet 61 - VG86

53,638M 4.3% 2291F 3.4% 1843P (Lifetime)



[Dtr: Kangawarra Passion 3547](#)

[Dtr Owned by Ovensdale Illawarra's](#)

[Dam: Ovensdale Scarlet 99th - VG88](#)

[Dtr Owned by Ovensdale Illawarra's](#)

~Scarlet remains one of our Top selling Illawarra Sires, he is the equal No.1 Type Sire at +114 in the Top 20 APR Sires and is the equal No.2 Sire for both Udders at +111 and Milk Production at +814M. Scarlet is one of the breeds best for improving Ligament Strength and Teat Placement along with good Workabilities, especially Temperament at +104 and Farmer Likeability +103.

~Scarlet hails from a high productive cow family with his 2nd & 3rd dams producing over 50,000 Litres of lifetime Production. His dam; Ovensdale Scarlet 99th - VG88 has placed well in the Victorian Red Cow On-Farm Challenge Competition 2 years running.

~Scarlet sired the Reserve Intermediate Champion at this year's 2012 Brisbane Royal Show - Kangawarra Passion 3547. In addition to this achievement; she was Reserve Junior Champion & Supreme Reserve Junior Champion at the 2011 Gympie Show.

August ABV 2012

APR	ASI	Rel	Prot	Prot%	Milk	Fat	Fat%	Rel	Dtrs	Herds	Type	Mam	Rel	SCC	Rel
-22	76	2	11	-0.21	814	-5	-0.58	86	82	31	114	111	65	39	77

KANGAWARRA SUNRISE - ET



Nasis Code: KGSUNRISE

\$20.00 + GST Per Dose

Rego #: 4326 Z

53.13% Illawarra



Sire: Silverleigh Churchill

Dam: Kangawarra Socks 2104th - VG

365D 8,920M 4.3% 385F 3.6% 319P

MGS: Venvale Prince - ET

MGD: Kangawarra Socks 7th

305D 12,417M 3.9% 481F 3.1% 390P



[KGSunrise Progeny in Brazil](#)

~KGSunrise is sired by high APR & Production Sire; Churchill and offers good honest Production with great Type +105 and Udders along with positive Components. He is ranked at No.7 on the Australian APR rankings from the latest August 2012 proofs.

~His dam: Kangawarra Socks 2104th - VG has been a very successful show cow who has won Reserve Champion Cow at Berry Show in 2005 & 2006, 1st 3-4 Year Old In-Milk at the Jamberoo Spring Fair in 2004 & 2005 and 1st 3-4 Year Old In-Milk at the Sydney Royal Show in 2005 & 2006. She was also the No.1 ASI cow in 2005 & MGD was a former No.1 ASI cow for several years running.

[Dam: Kangawarra Socks 2104th - VG](#)

August ABV 2012

APR	ASI	Rel	Prot	Prot%	Milk	Fat	Fat%	Rel	Dtrs	Herds	Type	Mam	Rel	SCC	Rel
34	60	34	3	-0.02	171	17	0.14	72	40	19	105	101	38	107	56



Agri-Gene Pty Ltd

123-125 Tone Road, Wangaratta Victoria 3677

Ph: 03 5722 2666 Fax: 03 5722 2777 Email: info@agrigene.com.au Website: www.agrigene.com.au



ILLAWARRA SIRE DIRECTORY 2012

Proven Illawarra Sire

GLENBROOK STARTRUMP

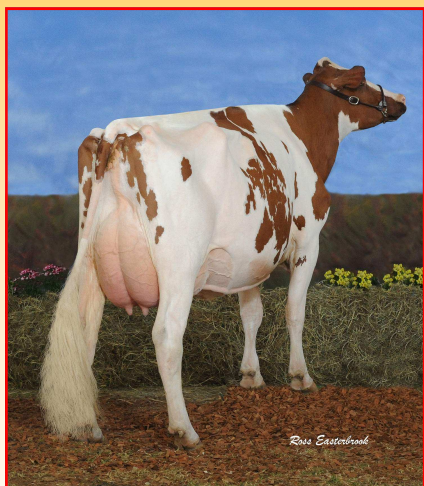


Nasis Code: STARTRUMP

\$15.00 + GST Per Dose

Rego #: 3731 Y

37.50% Illawarra



Sire: Stadel - HF

Dam: Glenbrook Graceful 5 - EX3E

305D 10,982M 4.5% 494F 3.0% 332P

MGS: Jondene Treasures Trump

MGD: Glen Haven Graceful 3 - VG87

~Startrump is ranked amongst the Top 10 APR Sires in Australia with good Type +107 and Udder +102 ratings.

~He is siring IDW and Royal Show Champions. In particular the daughter pictured; Winganna Startrump Handsome was Reserve Champion Cow at IDW in 2010 and she was the Coloured Breeds Champion Cow at Melbourne Royal Show in 2010.

~His dam is one of Australia's greatest Illawarra cows, an Adelaide Royal Champion in 1996 and 1998 and 4 x Real Australia with close to 100,000 litres of lifetime Production.



Dam: Glenbrook Graceful 5 - EX3E



Dtr: Jondene Nell 40

Dtr: Winganna Startrump Handsome

August ABV 2012

APR	ASI	Rel	Prot	Prot%	Milk	Fat	Fat%	Rel	Dtrs	Herds	Type	Mam	Rel	SCC	Rel
25	83	21	1	-0.03	97	16	0.17	92	157	50	107	102	67	120	85

Supplementary Sires

MYRTLEHOLME MITCH - ET



Nasis Code: MITCHPRESS

\$12.50 + GST Per Dose

Rego #: 4664 Y

46% Illawarra



Sire: Silverleigh Churchill

Dam: Myrtleholme Empress 32nd - EX91 3E

305D 13,472M 3.7% 500F 3.3% 444P

MGS: Myrtleholme Kieran

MGD: Myrtleholme Empress 29th

362D 10,966M 3.8% 418F 3.0% 326P

~Mitchpres is sired by high APR & Production Sire; Churchill from the Reserve All-Australian Champion - Myrtleholme Empress 32nd - EX91 3E, she was also Queensland's 2009 Production Cow of the Year; Lifetime Production 57,338L.



Sister: Myrtleholme Rose 212 - VG86

~Hon Mention Intermediate Champion & Best Udder Lismore Dairy Spectacular 2012

Dam: Myrtleholme Empress 32nd - EX91 3E

GLENBROOK TORNADO - ET



Nasis Code: GLENADO

\$12.50 + GST Per Dose

Rego #: 4463 Y

56.25% Illawarra



Sire: Silverleigh Monarch - ET (Red Monarch)

Dam: Glenbrook Duchess 10th - EX3E

305D 12,687M 4.2% 535F 3.0% 383P

MGS: Glenbrook Buttercups Reward

MGD: Glenbrook Duchess 3rd - EX1E

305D 9,130M 4.0% 361F 3.2% 288P

~Glenado is sired by Monarch who hails from the much admired Glenbrook Illawarra herd in SA. His dam; Glenbrook Duchess 10th EX3E was Champion Cow at the Adelaide Royal in 2002, 2003 & 2005 and she was 1st in the Australian Illawarra Photo Comp in 2004 & 2005.

Dam: Glenbrook Duchess 10th - EX3E

ILLAWARRA SIRE DIRECTORY 2012

New Progeny Test Sire for 2012

CLAREFIELD MILLMAN



Nasis Code: MILLMAN
Rego #: 4702

PT Price: \$10.00 + GST Per Dose / Outside PT Price: \$12.50 + GST Per Dose
43.75% Illawarra



Sire: Fyn Aks

Dam: Clarefield Monarch Milly 2611th - VG86 (2nd Lact)

301D 10,962M 3.4% 378F 3.3% 363P (Cont)

MGS: Silverleigh Monarch - ET (Red Monarch)

MGD: Worthwhile Millie - EX90 4E

305D 11,728M 3.7% 430F 3.0% 357P

PT
Semen



Dam: Clarefield Monarch Milly 2611th - VG86 (2nd Lact)

MGD: Worthwhile Millie - EX90 4E

- ~Champion Cow & Best Udder Kempsey Show 2004, 2005 & 2006
- ~Champion Cow & Best Udder Wauchope Show 2004, 2005 & 2006
- ~Res Supreme Champion / Supreme Best Udder Wauchope Show 2007

~Clarefield Millman is a New Release Progeny Test bull for 2012, sired by Aussie Red Type and Udder Specialist; Fyn Aks, Millman hails out of a VG86 Red Monarch daughter that goes back to the much admired and world renowned "Worthwhile Millie - EX90 4E" cow who is highly regarded for her consistency of Type, Production and all-round Management Traits.

~Millman represents a balanced pedigree of Production, Type and Longevity.

Progeny Test Sire for 2012

RIVERSLEIGH GILHAM



Nasis Code: GILHAM
Rego #: 4734

PT Price: \$10.00 + GST Per Dose / Outside PT Price: \$12.50 + GST Per Dose
50% Illawarra



Sire: Treeton Lethal (Red Viking)

Dam: Riversleigh Monarch Gracie 15th - VG86 - (3rd Lact)

305D 7,829L 4.9% 381F 3.4% 271P (PI: 117)

MGS: Silverleigh Monarch - ET (Red Monarch)

MGD: Riversleigh Gracie 6th - VG86

305D 8,708L 3.8% 327F 3.3% 290P (PI: 112)

PT
Semen

~Gilham is sired by the No.1 APR Sire in Red Viking and hails from Riversleigh Monarch Gracie 15th - VG86 who has broad ribbons to her name which include; Intermediate Champion at the Shepparton National Dairy Show in both 2009 and 2010.

~This Australian cow family is renowned for its superb Longevity and Protein%. Four direct dams have 3.4% Protein or better. His 2nd dam is on her 7th lactation, and 3rd & 4th dams both did 8 and 7 lactations respectively. His 3rd dam also has an EX92 maternal sister that is in her 7th Lactation.

~Gilham exhibits traditional Illawarra pigmentation, being dark red in colour with virtually no white markings.

Dam: Riversleigh Monarch Gracie 15th - VG86



Agri-Gene Pty Ltd

123-125 Tone Road, Wangaratta Victoria 3677

Ph: 03 5722 2666 Fax: 03 5722 2777 Email: info@agrigenes.com.au Website: www.agrigenes.com.au



ILLAWARRA SIRE DIRECTORY 2012

Sexed Semen Available - Gold Label Sire for 2012

LLANDOVERY PRIDES PROPHET - ET



Nasis Code: PRIDEPROPHET Gold Label \$14.00 + GST Per Dose Rego #: 4592 Y 50% Illawarra



Sire: Winganna Handsome Tulip
Dam: Llandovery Futurions GE Pride - EX90
305D 10,843M 3.93% 426F 3.10% 336P
MGS: Llandovery Jeans Futurion
MGD: White Gates GE Pride - ET VG88
362D 10,809M 3.90% 422F 3.28% 354P



~Prides Prophet is a Gold Label Sire who descends from Llandovery Futurions GE Pride - EX who was the 2009 IDW Champion Cow and Intermediate Champion Cow at IDW in 2005.

~He is sired by high Milk Production bull Winganna Handsomes Tulip who is currently the No.5 APR Illawarra bull and has an ASI of 106. He has created much interest since his daughters have calved in, even more so since a daughter won Reserve Intermediate Champion at IDW in 2011.

Sexed Semen Pricing

Sexed Semen Available \$60.00 + GST Per Dose
10+ Doses \$50.00 + GST Per Dose

Dam: Llandovery Futurions GE Pride - EX90

Gold Label Sire for 2012

PANORAMA ARAMIS



Nasis Code: REDRAMA Gold Label \$14.00 + GST Per Dose Rego #: 4336 X 68.75% Illawarra



Sire: Llandovery Crowns Vigorous - ET
Dam: Panorama Angeline 8th - EX90 1E
305D 9,256L 4.5% 418F 3.2% 295P
MGS: Lemon Grove Buttler ET
MGD: Panorama Angeline 6th - VG88



Dam: Panorama Angeline 8th - EX90

LCVigorous Sister: Llandovery Rangers Verbena 2nd EX

~Redrama is a Gold Label bull who is sired by high Type and Udder Specialist; LCVigorous, Redrama hails out of the impressive EX90 "Angeline" cow who was crowned Champion Cow at IDW in 2008 and Reserve Champion Cow at IDW in 2007. She was also crowned Champion Cow at the Brisbane Royal Show in 2005.

~Redrama is bred in the purple with his dam "Angeline" and his sire's maternal sister "Verbena" occupying the Champion and Reserve Champion positions at IDW in 2008.



Agri-Gene Pty Ltd

123-125 Tone Road, Wangaratta Victoria 3677

Ph: 03 5722 2666 Fax: 03 5722 2777 Email: info@agrigene.com.au Website: www.agrigene.com.au

