

ILLAWARRA SALE

2011



PANORAMA ANGELINE 8



KANGAWARRA PASSION 3136



GLENBROOK RHAPSODY 21



Tuesday, January 18
at 6.30pm



2011 IDW PROGRAM

SUNDAY, January 16

11.30am Youth Clinic

MONDAY, January 17

8am Ruralco / ABS Australia All Breeds Youth Show

1.30pm Youth Showmanship Classes

3pm Holstein Australia Victoria Youth Challenge Trials

TUESDAY, January 18

9am National Illawarra Feature Show

9am National Ayrshire Feature Show

1pm National Guernsey Feature Show

1pm National Brown Swiss Feature Show

7pm IDW Protein Breeds Sale

8pm NHIA International Dinner

WEDNESDAY, January 19

8.30am National Jersey Feature Show (*classes 1-7*)

11am Lunch

1pm National Jersey Feature Show (*begin class 8*)

7.30pm IDW Semex Holstein Spectacular Sale

THURSDAY, January 20

8am National Holstein Feature Show (*classes 1-8*)

11am Lunch break

1pm National Holstein Feature Show (*begin class 9*)

5pm Australian Grand Champion

5.30pm Presentations

FRIDAY, January 21

11.30am DLS Summer Spectacular Sale, Shepparton Selling Centre

1

PANORAMA ANGELINE 17

Account: K & A DORRIES, Oakey, Qld.
Herd Bk: 136374
DOB: 10/6/10
Tattoo: 909
JD Score 10



Dam: PANORAMA ANGELINE 9 EX92



Maternal sister to dam: PANORAMA ANGELINE 8 EX

sire
GLENBROOK KOSCIUSKO
ABV 8/10: APR +41 ASI +65 +790ltrs
+108 Type.

FABER (Red)
ABV 8/10: APR +132 ASI +78 +108 TYPE

GLENBROOK VIRGIN EX by JTT

dam:
PANORAMA ANGELINE 9 EX92
Age Milk Fkg F% Pkg P% Days PI
30 8424 338 4.0 280 3.3 423 110
46 7973 315 4.0 262 3.3 330 115
58 8390 318 3.8 283 3.4 347 112
71 10080 355 4.1 415 3.5 355 118
84 10250 383 3.7 329 3.2 302 114
95 3889 149 3.8 123 3.2 104
Best Udder & Champion Cow Brisbane Royal
2006, 2008, 2009, 2010.
Champ All Breeds Type & Production Cow
Brisbane Royal 09.
Champion Cow Dairy Spectacular 2008.
3/4 sister to PANORAMA ANGELINE 8 EX.
Champion cow Toowoomba & Brisbane 2005
Reserve Champion Cow IDW 2007
Champion Cow IDW 2008

LEMON GROVE BYGOLD
ABV 8/10: +108 TYPE

PANORAMA ANGELINE 6 VG86
Age Milk Fkg F% Pkg P% Days PI
37 8003 307 3.8 262 3.3 342 136
49 7676 307 4.0 245 3.2 314 131
62 7197 270 3.8 234 3.3 295 117
73 5676 213 3.8 192 3.4 257 86
Champion Cow Toowoomba

NLD GOLDIE

LEMON GROVE BUTTERCUP 204 EX
Champion Cow Melbourne, Sydney, etc.

VENVALE PARKES
ABV 8/10: TYPE +115

PANORAMA ANGELINE 4 VG87
Age Milk Fkg F% Pkg P% Days PI
35 6362 246 3.9 213 3.4 333
48 5320 204 3.8 181 3.4 309
60 6208 252 4.1 213 3.4 311
72 6467 261 4.0 221 3.4 275
83 4688 198 4.2 155 3.3 344
Consistent Show Cow

Purchaser:

Account: J C ALTMAN & SON, Murray Bridge, SA.
 Herd Bk: 134901Y
 DOB: 25/12/2009
 ID: 6553
 JD Score 8



BLACKWOOD PARK BEAUTY 57
 Maternal sister to Grand Dam (Beauty 48)
 Dam of BP Blitz available at SEMEX AUSTRALIA
 Produced 1301L 416KgP 500KgF

sire
GLENBROOK TORNADO
 (Available from Agri-gene)

SILVERLEIGH MONARCH ET

ABV 8/10: APR +134 ASI +165
 M+510 +51P +0.42%, +19F +0.1%
 +112 Type.
 Sired Champion Cow at Royal Adelaide Show
 2009.

GLENBROOK DUCHESS 10 3EX

Age	Milk	Fkg	F%	Pkg	P%	CPI	Days
	12687	535	4.2	383	3.0		305

Champion Cow Adelaide Royal 2002-2003-2005.
 Winner All-Australia Photo Comp 2004-2005.
 Maternal Grand Dam:
 GLENBROOK DUCHESS 3E
 9130 361 4.0 288 3.2 305

SILVERLEIGH CHARMER

by Venvale Parkes
 Dam: SILVERLEIGH CINDY 2 EX
 Leading Lifetime Prod. 2009

dam
BLACKWOOD PARK BEAUTY 68

Age	Milk	Fkg	F%	Pkg	P%	CPI	Days
4.7	12263	486	3.96	383	3.12	123	305
3.5	11484	476	4.14	368	3.20	122	305
2.3	7557	336	4.45	256	3.39	97	305

Current National Record Holder for kg FAT
Producing 476kg fat as a 3 year-old.
 Life: Milk 33,545 Fat: 1401Kg Prt: 1084kg

BLACKWOOD PARK BEAUTY 48 VG87

10.7	893	46	5.15	29	3.25	85
9.4	8196	332	4.05	245	2.99	96
8.0	7001	321	4.59	218	3.11	87
6.7	7585	332	4.38	264	3.48	94
5.6	9072	331	3.65	314	3.46	104
4.5	8302	316	3.81	281	3.38	102
3	6939	313	4.51	233	3.36	102
2	5966	237	3.97	207	3.47	102

Maternal Sister to Grand-dam
 BLACKWOOD PARK BEAUTY 62 (VG87)
 Produced: 13477L 496F 429P 305days



KANGAWARRA PASSION 3136

Account: Kangawarra Illawarras (Cochranes) NSW
 DOB: 4/10/2008
 Paddocked with Kangawarra Classic (4559X) since 20/4/10
 JD SCORE 8

1st 2yrs dry, Junior Champion Illawarra and Supreme All Breeds Heifer Adelaide Royal 2010

sire

OVENSDALE SCARLET MARCEL

(Marcel Red x Pearlscaas)

ABV 8/10: APR +37; ASI +40;

+1133ltrs +109 TYPE

dam

KANGAWARRA PASSION 2461

Age	Milk	Fat	Fat%	Prt	Prt%	Days	CPI
J2	6480	245	3.8	200	3.1	305	112
J3	6919	322	4.7	212	3.1	305	112
J4	8306	362	4.4	275	3.3	305	110

PI 112

KANGAWARRA SAMBO (38582)

Sire Sydney Royal Champion 2009

Sire of many great herd cows,

KANGAWARRA PASSION 2226

Sold for dairying

VENVALE PRINCE (1382Y)

ABV 8/10: +114 TYPE

KANGAWARRA SOCKS 1382

MA 10274ltrs 4.1%F 3.6%P 305d

KANGAWARRA LUCIFER (3474X)

KANGAWARRA PASSION 1980

Sold for dairying

Purchaser:



Dam: GLENBROOK RHAPSODY 21

Account: IL & JA MUELLER, Murray Bridge. SA
 Reg.No: 135879
 DOB: 14/4/2009
 Tattoo: ILM 1628
 Nat ID: 409006759
 JD SCORE: 8

Mated to Panorama Attention 10/11/2010
 (s. Advent - d. Panorama Angeline 8)

An outstanding cow family, other family members include

GLENBROOK RHAPSODY VG88,
 Reserve Champion & Best Udder Adelaide Royals.

GLENBROOK RHAPSODY 22 EX
 Intermediate Champion, Senior Champion & Best Udder Adelaide Royals.

GLENBROOK RHAPSODY 18
 Recently classified Exc 91 with EX 17 in 3 Udder categories.

sire
INNISFAIL PRINCE OF DIAMONDS (USA)
High Profile USA sire.
 PTA 8/09: +223 Ltrs +15F +4Prt +8 Type
 Sire of many all American Winners.

dam
GLENBROOK RHAPSODY 21st VG89

Lact.	Milk	Fat	Fat%	Prt	Prt%	Days
1	7992	209		222		305
2	10149	349		321		305
3	11698	391		348		305
4	12869	374		399		305

1st 3yrs in milk, Reserve Intermediate Champion Adelaide 2005.
 1st 5yrs in milk IDW 2008.
 1st Best Udder of Show, Honourable Mention Snr Champion Cow
 1st Aged Cow in milk Adelaide 2010
 Senior Champion and Supreme Exhibit Adelaide 2010.

WILDWOOD CASS DIAMOND
 by Town View Cassius (Illawarra)

INNISFAIL RB PRINCESS 771st VG87
 Age Milk Fat Fat% Prt Prt% Days
 7-3 10806 400 3.6 339 3.0
 Lifetime 61,281 litres.

GLENBROOK TRIDITION 3552

GLENBROOK RHAPSODY 13th VG
 Prod: 8217 Ltrs, 306 Kg B/F, 261 Kg Prt, 305 d.
 Lifetime: 62,747 Ltrs, 2,415 KgB/f, 1973 KgPrt.

Purchaser:

Account: T & E HAYES, Stanhope, Vic.

DOB: 28/2/09

JD Score: 4 Calf Programme

Pastured with Llandoverly RM Jack
from 20/10/10.

Reserve Champion Heifer Shepparton 2010
1st under 18mths.
Maternally related to Futurions Pride, Champion
IDW 2009



LLANDOVERY FUTURIONS PRIDE

sire

FRADON REDLINER - RED EX91 ST

ABV 8/10: Can. GLPI +669 +384 M +14 Type.

LADINO PARK TALENT IMP ET

FRADON RUDOLPH JODIE EX10 SBC

Age	Milk	Fkg	F%	Pkg	P%	Days	PI
4.3	15076	671		485		265d.	

4 Exc Dtrs.

LLANDOVERY CROWNS VIGOROUS

Sire of On-Farm Challenge Winner from Newtons
2010.

LLANDOVERY MARKERS PRIDE

Age	Milk	Fkg	F%	Pkg	P%	Days	PI
7.8	7092	245		207		305	64
6.9	5768	199		160		288	66
5.7	8479	290		244		305	88
4.4	7999	277		240		290	86
3.4	7889	280		237		304	90

Life: 44,537M, 1541F; 1314P.

WHITE GATES TRIPLE CROWN

ABV 8/10: APR +42 TYPE +111

WHITE GATES VERBENA 2

Age	Milk	Fkg	F%	Pkg	P%	Days	PI
9.0	10290	403		340		305	129
7.5	9046	344		309		305	113
6.5	10549	405		351		305	142
5.5	6746	232		228		305	92

INDIANHEAD RED-MARKER EX ST

170 EX daughters in Canada.

WHITE GATES PRIDE 2

Age	Milk	Fkg	F%	Pkg	P%	Days	PI
8.10	8429	364		275		293	108
7.9	10023	374		336		305	113
6.7	7478	313		265		305	92
5.6	8080	288		292		305	94
4.5	7244	258		250		305	102
3.5	7487	293		260		305	97

Life: 57769 2263 2012

4th dam

Parkview Triple R Pride VG89

Intermediate Champ. Melbourne & Shepparton,
etc.

Dam:

LLANDOVERY VIGOROUS'S PRIDE

Age	Milk	Fkg	F%	Pkg	P%	Days	PI
5.8	7148	262		216		260	87
4.7	6526	303		216		297	78
3.7	7518	316		242		305	86
2.4	5580	210		178		305	81

Life: 27,849M 1142F; 891Prt.

Purchaser:

6

PANORAMA TAMMY 30 VG85

Account: K & A DORRIES, Oakey, Qld

Herd Bk: 128057

DOB: 18/2/2006

ID: E08003558 675

JD Score: 10

Age	Milk	Fkg	F%	Pkg	P%	Days	PI
20	9861	406	4.1	375	3.8	583	135
44	9247	372	4.0	333	3.6	316	122

Super young cow, look at her protein.

Calved late November 2010

sire

VALLEY RIVER RUBEN REDMAN (HF) (CAN)

ABV 8/10: APR +32 Type +110

Sire of 48 Ex. Daughters in Canada.

Sired Supreme Champion Cow All Breeds Royal Winter Fair Canada 2010.

dam

PANORAMA TAMMY 20 VG87

Age	Milk	Fkg	F%	Pkg	P%	Days	PI
39	5249	195	3.7	179	3.4	311	83
52	4722	181	3.8	161	3.4	267	83
64	5870	201	3.4	201	3.4	315	80

1st 5-7 yrs. & Honourable Mention, Champion Cow Toowoomba 2003.

STBVQ RUBENS VG88**VALLEYRIVER MARK MEGGIE VG87**6-4 11605 508 4.4 404 3.5
(Chief Mark x Triple Threat)**PANORAMA RISING STAR 3028****PANORAMA TAMMY 11**

Age	Milk	Fkg	F%	Pkg	P%	Days	PI
44	4122	186	4.5	150	3.6	309	
56	4518	171	3.8	160	3.5	331	
69	3118	110	3.5	105	3.4	233	

Purchaser:

7

WARRAWEE PARK GLADYS 7

Account: Warrawee Park, Mooroopna, Vic

DOB: 24/6/2008

ID: 1108

HB: 132535Z

JD status: non-assessed EBL - Negative

Calved 5/7/2010.

Joined 18/11/10 to JF Jed.

Age	Milk	Fat	Fat%	Prt	Prt%	Days	CPI
25	3510	172	4.9	125	3.6	130	cont.111

6th 2yrs in milk Red CowOFC 2010

sire

CAROUSEL RESURRECT RED**LADINO PARK TALENT****STELBRO RENITA RANGER EX 94**

4 times Champion World Dairy Expo

4 times All-American

4-1 11151lrs. 467kgF-4.1% 368kgP-3.2%

dam

KANGAWARRA GLADYS 1777 87pts

29	6299	285	4.9	227	3.9	305	112
49	7257	319	4.5	250	3.5	305	112
64	7063	297	4.2	248	3.5	305	94
76	6791	278	4.1	241	3.6	300	86
89	5819	234	4.0	190	3.3	245	78
112	6199	207	3.3	198	3.2	199	93
123	5167	230	4.5	175	3.4	239	91

The Cochrane family tell us that the first Gladys calf was born and registered over 100 years ago.

Dam of 7 dtrs including

Gladys 2 - show champion

Gladys 5 7th 3yrs in milk 2010 OFC

Gladys 8 5th 2yrs in milk 2010 OFC (twin to

Gladys 7)

WHITE GATES TRIPLE CROWN

ABV 8/10: APR +42 +111 TYPE

KANGAWARRA GLADYS 1358

J2	7173	292	4.1	232	3.2	305
S4	8669	372	4.3	282	3.3	305
M	9829	410	4.2	296	3.0	305
M	8563	341	4.0	279	3.3	305

Purchaser:

Account: Lemon Grove Illawarras, Tongala, Vic.

Herd Bk: 133324X

DOB: 30/8/08

Tattoo: CRC229

*When Lemon Grove was first developed with the purchase of 9 heifers in 1884 it was the start.
Cattle were not registered until 1906 and that is when the Princess Family first started.*

Will be calved

This heifer has been especially selected for this sale. Closely bred along the same lines as Princess 749 - 1st IDW 2009 2yrs in-milk; 1st IDW 2010 3yrs dry.

Age	Milk	Fkg	F%	Pkg	P%	Days
28	9317	367	3.9	310	3.3	305
cont	14,874	603		527		637

sire

PANORAMA ROYAL TREBLE 4112

ABV 8/10: APR +63 ASI +89 Type +105

Sired Res. Intermediate Champion at Royal Adelaide Feature Show 2010.

This bull is looming to be better than his sire with wide spread use.

SILVERLEIGH MONARCH ET

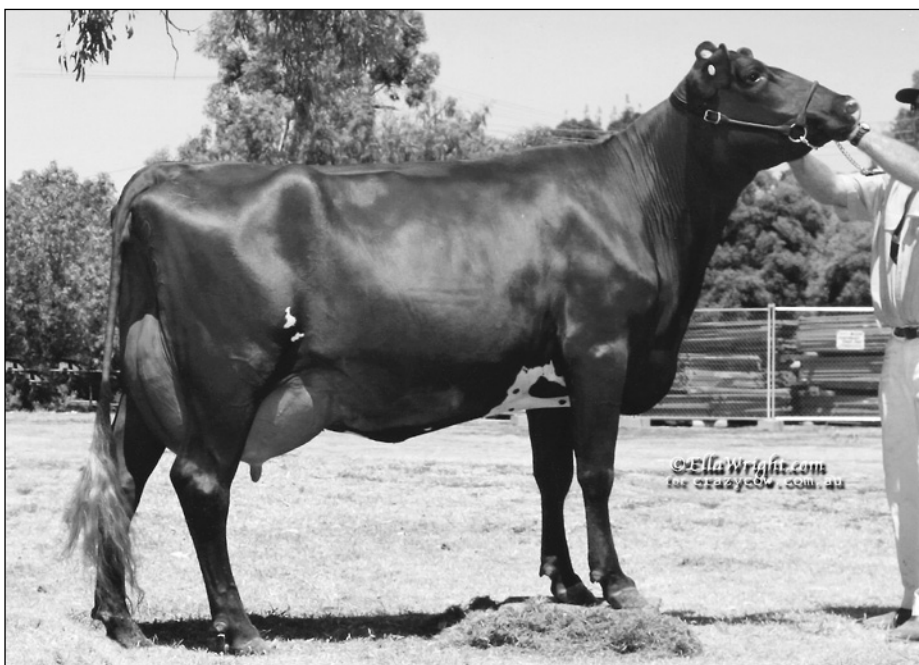
ABV 8/10: APR +134 ASI +165

+510M, P+51 +0.42%, F+19 +0.1% +112 Type. Australia's top A.I. Bull for number of years. His full sister described as probably one of Illawarras best.

PANORAMA LADY 38 X EX 2E 99693

Champion Cow Brisbane 3 times.

6 Lacts.: 41844 ltrs - 1813kgF - 1404 kgPrt



LEMON GROVE PRINCESS 726 VG87



LEMON GROVE PRINCESS 647 VG88



LEMON GROVE PRINCESS 600 VG88

dam

LEMONGROVE PRINCESS 730 VG X 110737

Successfully shown at IDW twice.

Produced to date-

7 Lacts.: 53,578 ltrs 1946kgsF 1755kgP

Only other daughter in herd Princess 751 prod.

Age	Milk	Fkg	F%	Pkg	P%	Days
30	8831	336	3.8	301	3.4	305

4th dam

Lemongrove Princess 647 VG88

M 8678M - 271kgF 305d.

Champion Cow Melbourne Royal

5th dam

Lemon Grove Princess 600 VG88

Res. Intermediate Champion Sydney Royal

LEMON GROVE BOY PARKES 3262X

Only had 2 daughters before he was sold to stud.

LEMON GROVE PRINCESS 722X

Lost this cow with hip displacement just after calving.

VENVALE PARKES ETY. 1379

LEMON GROVE BUTTERCUP 236 VG 85300

Best Udder Winner IDW.

5 Lacts: 31,384M 984Prt 1101 Fat

LEMON GROVE BEORKY 2570

LEMON GROVE PRINCESS 693Y 90360

7 Lacts: 48,688M 1536Prt 1733 Fat
by Hanover Hill Triple R (Red)

Purchaser:

Account: T & V TIDCOMBE, Shepparton.

Herd Bk: 134209Y

DOB: 25/7/2009

Tattoo: 2JJ 816

JD SCORE: Cap 4. Mon. Negative

Show Record:

1st heifer born 1/7/2000 to 31/8/09 &
Junior Champion Kyabram Vic. Calf Day.
2nd yearling heifer Shepparton 2010.

WALLUMLANDS PLUM is the best heifer Wallumlands can offer -
outstanding type from one of the breeds greatest cow families.



Dam: WALLUMLANDS PLUM VG87



4th-8th dam

Springvale Plum 3 ET
Wilmington Plum 24 VG
Wilmington Plum 8 n/c
Wilmington Plum Ex.

Twice Supreme Cow All-Breeds
Brisbane Royal
5-4 11,261 542kgF 4.8%
Navilloween Plum 22 VG
Champion Toowoomba Royal

2nd dam:

CRAWFORD TAYLOR PLUM

sire

FABER (H.F.) (DEV) 912913

ABV 8/10: APR +132 ASI +78 +106 Type

RENOWN FACTOR 2929813

LORELEY 12 (21135253)

GLEN MEADOWS DAISYS TRICK

Sire of 3 Excellent cows at Glen Meadow.

CRAWFORD TAYLOR PLUM VG88

Age	Milk	Fkg	Pkg
J2	9220	357	290
S3	7742	263	241
	7385	285	240
	7754	324	252
	8458	350	274
	9252	350	279

3rd 5yrs in-milk On-Farm Challenge 2007 (23 ent.)
4th Mature Cow On-Farm Challenge 2009 (32 ent.)

TO-MAR BLACKSTAR (1929410)

RENOWN ENHANCER TINSEL R

UNITED NICK (1989083)

LINDA 12 (20728974)

GLEN MEADOW BUTTERFLYS TRUMP

GLEN MEADOW PV DAISY

LEMON GROVE BYGOLD ET

ABV 8/10: +108 Type

GLENHAVEN PLUM VG 86

dam

WALLUMLANDS PLUM VG87

Age	Milk	Fkg	Pkg
J2	9220	357	290
S3	7742	263	241

3rd 2-3yrs dry IDW 2009

5th 2yrs in-milk IDW 2008

10

SPRINGVALE PENDANT 73

Account: WN & CA DOECKE, Murray Bridge. SA
 Herd Bk: 132517Y
 DOB: 16/11/2008
 JD Score: 8

Paddock mated to Springvale Hector
 Due from 15/2/11

sire
LEMON GROVE BUMPER
 His 2nd dam Buttercup 204 EX Champion
 Melbourne, Sydney and Shepparton etc.

HELIX R
 Sire of Champion Cow at IDW

L G BUTTERUP 236 (ET) VG
 6yrs 6477M - 224F - 201Prt (kgs)
 2nd Best Udder IDW

dam
SPRINGVALE PENDANT 51

Age	Milk	Fat	Fat%	Prt	Prt%	Days	CPI
5.4	7035	327	4.65	235	3.34	305	116
4.4	6839	290	4.24	235	3.44	298	106
3.2	5782	253	4.38	188	3.27	305	106
2.2	4895	177	3.62	163	3.33	289	100

SPRINGVALE FELIX

SPRINGVALE PENDANT 39

Age	Milk	Fat	Fat%	Prt	Prt%	Days	CPI
2.6	3173	98	3.09	100	3.15	214	72

Purchaser:

11

SPRINGVALE MYRTLE 16

Account: WN & CA DOECKE, Murray Bridge. SA
 Herd Bk: 132521X
 DOB: 17/11/2008
 JD SCORE: 8

Paddock mated to Springvale Hector
 Due from 15/2/11

sire
LLANDOVERY VERBS VISCOUNT

LLANDOVERY JINNY S EMPIRE
 +118 TYPE - BREED LEADER

LLANDOVERY RANGERS VERBENA 2
 Twice champion Illawarra at IDW.

dam
SPRINGVALE MYRTLE 4

Age	Milk	Fat	Fat%	Prt	Prt%	Days	CPI
7.4	6354	255	4.01	216	3.40	305	97
6.2	7196	289	4.02	254	3.53	305	102
4.1	6950	282	4.06	241	3.47	305	121
3.10	7037	241	3.42	231	3.28	284	110
2.8	6269	222	3.54	203	3.24	305	112
Life	35690	1390		1231			

SILVERLEIGH DUNCAN
 ABV 8/10: .APR +30, ASI +27
 +106 TYPE +567M

AV MYRTLE 122

Age	Milk	Fat	Fat%	Prt	Prt%	Days	CPI
9.5	7779	307	3.95	238	3.06	305	119
8.7	6025	222	3.68	194	3.22	276	105
7.7	6099	251	4.12	186	3.05	305	97
6.6	7936	293	3.69	240	3.2	305	115
5.1	7991	297	3.72	259	3.24	305	

Purchaser:

Account: TERRY & DANILA KAVENAGH, Larpent, Vic.

Herd Bk: 136687

DOB: 8/9/2008

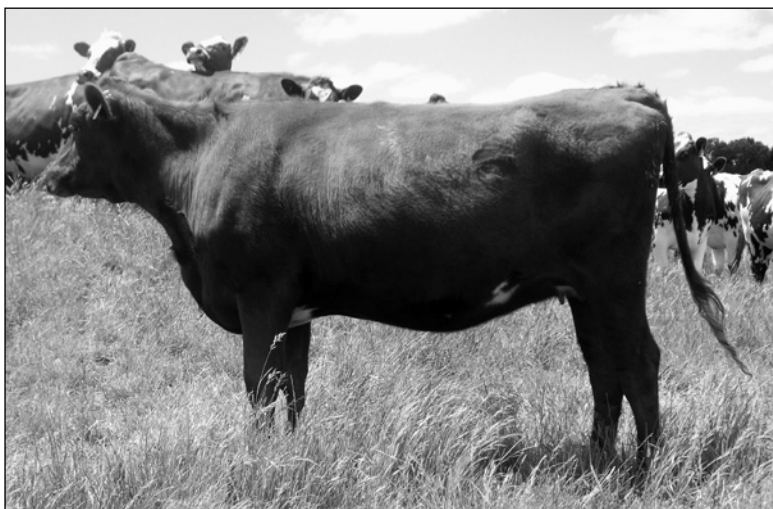
ID: K15136687

Tattoo: CEK 3267

Pastured with Treeton Pimp, should be freshly calved.



Dam: TRALEE VENTUROUS FLOWER 125637



Lot: TRALEE TREBLES FLOWER

sire

PANORAMA ROYAL TREBLE 4112

ABV 8/10: APR +63 ASI +89 Type +105

Sired Res. Intermediate Champion at Royal Adelaide Feature Show 2010.

SILVERLEIGH MONARCH ET

ABV 8/10: APR +134 ASI +165 +112 Type.

PANORAMA LADY 38th EX 1

Three times Champion Bisbane Royal.

Age	Milk	Fkg	F%	Pkg	P%	CPI	Days
64	7432	354	4.8	253	3.5	120	312

VENVALE PARKS (AI) (ET) 1379

ABV 8/10: Type +115

PANORAMA LADY 27 VG

dam

TRALEE VENTUROUS FLOWER 125637

Life 9239 373 4.0 311 3.4 531 104

Age	Milk	Fkg	F%	Pkg	P%	Days	CPI
24	4349	156	3.6	145	3.3	305+	100
42	3904	166	4.3	125	3.2	122	107

3rd Lact: 8703lrs M; 375d.

Her 1st year being milked by Robot

Life 9239 373 4.0 311 3.4 531 104

LLANDOVERY CROWNS VENTUROUS (ET)

TRALEE MONARCHS FLOWER 2427th GP

Life 15398 663 4.3 549 3.6 751 106

Age	Milk	Fkg	F%	Pkg	P%	Days	CPI
38	5684	215	3.8	199	3.5	284	111
53	6373	298	4.7	227	3.6	305+	105
70	1656	70	4.2	49	3.0	49	101

6489lrs. 224d. cont.

Her first year being milked by Robot

WHITE GATES TRIPLE CROWN (ET) 2639

WHITE GATES VERBENA 2nd VG82834

SILVERLEIGH MONARCH ET

ABV 8/10: APR +134 ASI +165 +112 Type.

SPRINGVALE FOWER 28TH GP 98841

Purchaser:



Full sister: GLENCLIFFE BEAUTY 471 (2yrs in milk)

Account: R Parker, Undera

DOB: 24/7/10

JD STATUS: Non assessed.

Glenclyffe have been breeding Illawarra's 75 years.

The Beauty's originate from Tubbagong, this heifer is backed by four generations of VG86 dams.

sire

SEATTLE - RED

*Pursuit September Storm x Glen-I Beq Igniter
Sacha VG88*

dam

GLENCLIFFE BEAUTY 332 VG86

Age	Milk	Fat	Fat%	Prt	Prt%	Days	CPI
6.5	2450	76.3	3.1	81	3.31	113	
5.6	7139	291	4.8	236	3.31	305	
4.6	6679	270	4.04	237	3.55	305	
3.6	6426	248	3.86	209	3.25	305	

Glenclyffe Beauty 471 (Full sister):

1st Yearling Hfr & Res. Jnr Champ. Shepparton
2009. 1st Yearling Heifer Class & Champion
Heifer All-Breeds Class Shepparton Youth Show.
3rd Yearling Heifer Class IDW 2010.
2nd Dry Heifer Class - 2010 Illawarra Photo Comp
1st Hfr under 2yrs, 1st Sires Prog, 1st Pen of 3, &
Champion Heifer 2010 Vic. Illawarra Calf Show.
1st 2yrs in-milk & Res. Inter. Champion
Shepparton Show 2010.

ALLEN VALE JASON

GLENCLIFFE BEAUTY 6 VG86

3rd dam

GLENCLIFFE BEAUTY VG86

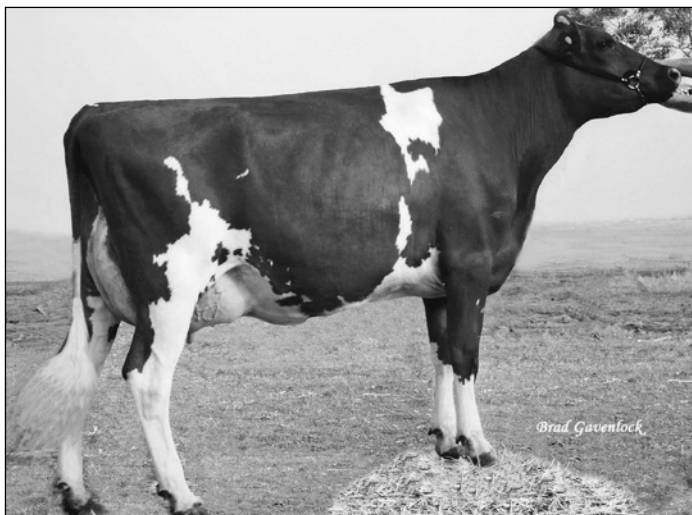
Won class 3yrs in succession Brisbane Royal

4th dam

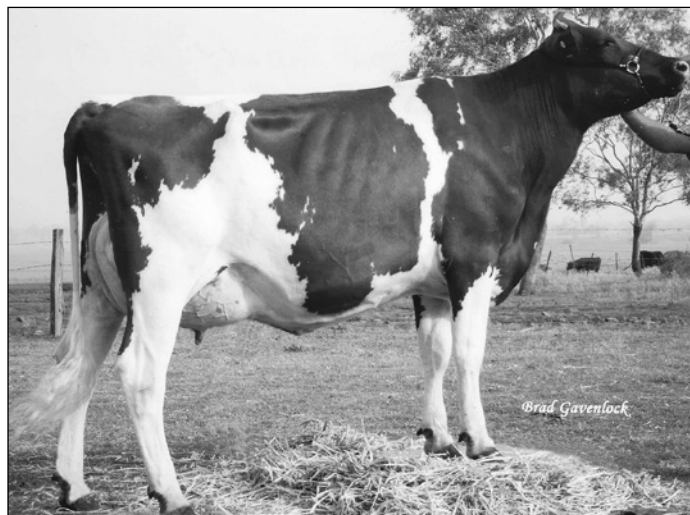
IRONWOOD PARK SCARLET BEAUTY VG86

Purchaser:

Account: K & A DORRIES, Oakey, Qld
 Herd Bk: 136373
 DOB: 4/3/10
 Tattoo: 897
 JD Score: 10



Maternal sister to dam: PANORAMA HONEY 13



Maternal sister to dam: PANORAMA HONEY 14

sire
PANORAMA LANDMINE 4459

SILVERLEIGH MONARCH ET

ABV 8/10: APR +134 ASI +165 +112 Type.

PANORAMA LADY 47 VG88

dam
PANORAMA HONEY 11 GP84
 Age Milk Fkg F% Pkg P% CPI Days
 31 8043 318 3.8 269 3.2 128 305
 Total: Milk 13,653 Fat: 528kg Prt: 452kg
 Maternal siser -
PANORAMA HONEY 14 (ET) VG85 H
 Intermediate Champ. Illawarra & Supreme All
 Breeds Best Udder Brisbane Royal 2009.
 1st 3-4yrs in-milk Brisbane Royal 2010
 2-2 8503 361 4.2 316 3.7 305

Maternal sister to
PANORAMA HONEY 13 ET GP84
 2nd 3-4yrs Brisbane 2010
 2.2 7278 297 4.08 252 3.46 305
PANORAMA HONEY 15 ET GP 84
 2.2 9206 382 4.15 303 3.29 305
PANORAMA HONEY 9 VG87
 Prod. over 10,000 ltrs for the Hurford family,
 Katunga.

VALLEY RIVER RUBEN REDMAN (HF) (CAN)

ABV 8/10: APR +32 Type +110
 Sire of 48 Ex. Daughters in Canada.
 Sired Supreme Champion Cow All Breeds Royal
 Winter Fair Canada 2010.

PANORAMA HONEY 4 VG87

Age	Milk	Fkg	F%	Pkg	P%	Days	PI
26	7806	317	4.1	273	3.5	444	123
42	9043	364	4.0	318	3.5	372	133
57	9204	369	4.0	315	3.4	320	132
68	9503	375	4.0	322	3.4	355	131
82	9114	315	3.5	308	3.4		120

Intermediate Champion Toowoomba
 1st 3-4yrs Toowoomba & Brisbane Royal 2002

GLEN MEADOW DINGO

ABV 8/10: APR +50 ASI +74

PANORAMA HONEY VG85

Age	Milk	Fkg	F%	Pkg	P%	Days	PI
37	5704	223	3.9	198	3.5	288	
47	5909	231	3.9	214	3.6		

1st 3-4yrs & Reserve Champion Cow Brisbane
 Royal 1999.

Purchaser:

15

TREWILGA STATION ETHEL 482

A/c: EJ & ML ALCORN, Jemalong, NSW
 Reg.: 134241
 Tattoo: TWS013
 DOB: 3/7/09
 JD Score 7
 To be mated by sale.

Show results:

1st heifer under 12mths Canberra Royal 2010
 1st & Res. Champ. Jamberoo Spring Fair 2010

dam

RAYBRIGHT ETHEL 410

Massive up standing dairy cow.

Died 3 day sickness.

One show, 1st dry cow under 4yrs Sydney

Royal 2007, Judge Dean Malcolm.

Ethel 412 maternal sister, sire Meadowhaven

Daisy's Prince.

1st lact: 305d. 3.5% F 241kgs - 3.2%P 218kg

Currently being milked at T & N Cochrane's.

sire

SUNNY VIEW PRINCESS MARIO 35843

Leading Sire of Breed for over a decade.

Sire of many Supreme All Breeds Champion

Cows at Royal Shows all over Australia.

NAVILLOWEEN MARIO 30530

Champion Bull Toowoomba

Res. Champion Bull Brisbane Royal

SUNNYVIEW LITTLE PRINCESS 30

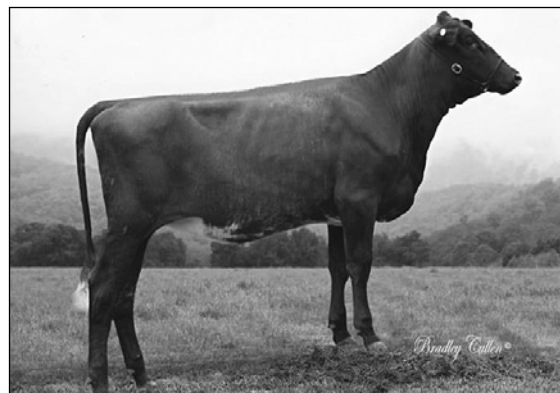
12 Lacts. ave: 10.075 litres 4.2% 434kgsFat

6 times Champion Cow Brisbane Royal

Many times All Breeds Cow of Year.

WHITE GATES TRIPLE CROWN (ET)

ABV 8/10: APR +42 Type +111.

RAYBRIGHT ETHEL 336th

Selling: TREWILGA STATION ETHEL 482

Purchaser:

16

KANGAWARRA PRINCESS 3158

Account: Kangawarra Illawarras
 (Cochranes) NSW

DOB: 7/11/2008

JD SCORE: 8

Paddocked with Kangawarra Heath (4687)
 since 30/7/10.

dam

KANGAWARRA PRINCESS 2466 (119516X)

Age	Milk	Fat	Fat%	Prt	Prt%	Days	CPI
J2	5834	234	4.0	184	3.2	305	103
J3	7367	302	4.1	241	3.3	305	107
J4	7622	313	4.1	259	3.4	305	103

sire

LLANDOVERY JINNYS EMPIRE (38922)

ABV 8/10: TYPE +118

LEMONGROVE BUTLER 3135Y

ABV 8/10: TYPE +107

KANGAWARRA PRINCESS 1713 (100926)

MA 8490ltrs 2.7%F 3.1%Prt 305days

MERRICREST OUTLAW AMSS (437226)

ABV 8/10: +261 Litres

KANGAWARRA PRINCESS 1409 (89453)

J3 8891ltrs 3.1%F 3.0%Prt 305days

8490 Litres

8991 Litres

Purchaser:

17 GLENBROOK LITTLE BUTTERCUP 22



Dam: Wilmington Buttercup 14 EX

Account: IL & JA MUELLER , Murray Bridge. SA
 Reg.No: 133133X
 DOB: 22/7/2008
 Tattoo: ILM 1531
 Nat ID: 408017291
 JD SCORE: 8

Paddocked with Lynonga Poplars Empire
 (s.Jinnys Empire - d. Lynonga Poplar 27 EX)
 from 4/5/2010.

A big powerful heifer with a pedigree off the top shelf.

sire
SILVERLEIGH MONARCH (ET) 3488
 ABV 8/10: APR +134 ASI +165 Type +112

SUBLIEM TULIP RED (NLD) (HF)
 ABV 8/10: APR +67

SILVERLEIGH MIMA (AI) VG

JONDENE TREASURE TRUMP (AI) (ET)
 ABV 8/10: Type +114

dam
GLENBROOK LITTLE BUTTERCUP 2nd VG87

Age	Milk	Fat	Fat%	Prt	Prt%	Days
6	8847	331		254		305
7	8801	304		254		305
8	8284	296		223		305

LIFETIME: 6643M 2348kg B/f 1884kgPrt.

ET sister to Dam:

GLENBROOK LITTLE BUTTERCUP VG87

Top Lact: 12,962Ltrs; 556kgB/f, 408kgPrt, 305 d.

Lifetime: 103,684Ltrs; 43,422kgB/f, 3356kgPrt.

South Australia Mature Butterfat Record.

WILMINGTON BUTTERCUP 14th EX 2

Age	Milk	Fat	Fat%	Prt	Prt%	Days
3.2	6263	234	3.7	195	3.0	314
4.1	6255	237	3.7	226	3.5	300
	7644	294	3.7	281	3.6	444
5.6	8610	325	3.7	298	3.4	311
M	10215	316		328		305

Champion Heifer Melbourne Royal 1986; Res.
 Champion Heifer Adelaide Royal 1986; Champion
 Cow, Champion All-Breeds Melbourne Royal
 1988;(all possible votes) Champion Cow, Res
 Dairy Cow Melbourne Royal 1989; Champion Cow
 Adelaide Royal 1991;1st Best Udder Sydney Royal
 1991. Champion Dairy Cow All Breeds Adelaide
 Royal.

Purchaser:



3rd dam: KANGAWARRA JEWEL 9, EXC.
Twice Champion Cow Sydney Royal

Account: Kangawarra Illawarras
(Cochranes) NSW

DOB: 14/3/2009

JD SCORE: 8

Paddocked with Kangawarra Heath (4687)
since 13/9/10.

Maternal sister
1st under 12mths IDW 2009

sire
LLANDOVERY JINNYS EMPIRE (38922)
ABV 8/10: TYPE +118

dam
KANGAWARRA JEWEL 2336 (116611X)

Age	Milk	Fat	Fat%	Prt	Prt%	Days	CPI
S3	6866	288	4.2	213	3.1	305	110
S4	8841	381	4.3	277	3.1	305	121
MA	9462	409	4.3	293	3.1	305	125

Has been a part of Kangawarra Show Team

CRYSTAL PARK ULTIMATE BOY (3322X)
ABV 8/10: +111 TYPE

KANGAWARRA JEWEL 2003 (107284Y)
J2 5242 4.1%F 3.3%P 305d.

VENVALE PRINCE (1382Y)
ABV 8/10: +114 TYPE

KANGAWARRA JEWEL 9 Ex. (75038X)
MA 7106lbs 4.3%F 3.3%P 304d
Twice Champion Cow Sydney Royal 1999, 2000.

9462 Litres

TERMS AND CONDITIONS OF AUCTION SALE IN VICTORIA

CHAPTER ONE - PRELIMINARY

1. (a) A vendor is bound by these terms and conditions by offering livestock for sale.
(b) An agent (which includes an auctioneer) is bound by these terms and conditions by conducting a sale.
(c) A buyer is bound by these terms and conditions by bidding at auction.
2. (a) In these terms the expression auctioneer, agent, buyer and vendor respectively includes the servants, contractors, agents of them. The auctioneer, agent, buyer and vendor shall be wholly responsible for the acts and omissions of their respective servants, contractors and agents. The term "auctioneer" includes, so far as the Act and context permits, the vendor's stock and station agent.
(b) When used in these terms the expressions "companion animals" means all animals originating from a property on a particular day. Where lots are split and sent to multiple establishments, then all of these animals shall be regarded as companions.
3. These terms and conditions are subject to legislation or regulation in the State in which the auction is conducted and in the event of any conflict then the legislation or regulation will prevail. The provisions of these terms and conditions are in addition to, and do not derogate from, the duties and rights of vendors, agents and buyers set out in legislation and regulation in the State in which the auction is conducted.

CHAPTER TWO - STANDARD TERMS OF SALE

4. Subject to any reserve price, and to the right, prior to the fall of the hammer, of the vendor to withdraw any lot without declaring the reserve, the highest bidder shall be the buyer.
5. The auctioneer has the right to bid on behalf of the vendor provided that right is notified prior to the commencement of the sale and is subject to State law.
6. A bid cannot be made or accepted after the fall of the hammer.
7. The last price called by the auctioneer at the fall of the hammer shall be the amount at which the lot has been sold.
8. In the event of a disputed bid, the auctioneer is the sole arbitrator of the successful bidder or the auctioneer may decide to put the lot up again. The auctioneer's decision is final.
9. The auctioneer may refuse to accept any bid which, in the auctioneer's opinion, is not in the best interests of the vendor and need not give reasons for doing so. The minimum bid for liveweight selling is 0.2 of a cent (\$0.002).
10. A bidder shall be deemed to be a principal unless, prior to bidding, the bidder has given to the auctioneer a copy of written authority to bid for or on behalf of another person.
11. Successful bidders. The actual successful bidder at an auction sale must give to the auctioneer or an employee of the auctioneer at the fall of the hammer:
 - (a) The purchaser's name; or
 - (b) The name of the person on whose behalf the successful bid was; and the
 - (c) PIC of destination.
12. The auction shall be conducted on the basis that the bid price shall be exclusive of Goods and Services Tax (GST). GST shall be added after the fall of the hammer for those sales subject to GST.
13. As soon as practicable after the fall of the hammer, the buyer shall sign the agreement for sale (if any).
14. If a buyer does not comply with any of these terms and conditions, which includes the requirements of State law, any stock knocked down to that buyer may be re-sold by public auction or private contract in whatever lots and manner the auctioneer decides. The re-sale may be with or without notice and shall be at the buyer's risk. The buyer is responsible for all loss and expense arising out of a re-sale and is not entitled to any resulting profit.
15. The buyer of livestock must pay the agent the full amount of the purchase price on receipt of a tax invoice. Payment is required prior to delivery unless some other time for payment is specified in a written agreement between the buyer and the auctioneer that was made before the fall of the hammer.
16. No person may bid unless, prior to the commencement of the sale, that person has made arrangements satisfactory to the auctioneer for payment for stock purchased. If bids in breach of this condition are inadvertently accepted, delivery shall not be given until the purchase money is paid and any law, rule or practice to the contrary is accordingly negated as far as possible.
17. (a) Cattle sold on a liveweight basis that are weighed pre-sale are at the risk and expense of the buyer upon the fall of the hammer.
(b) Cattle sold on a liveweight basis that are weighed post-sale are at the risk and expense of the buyer immediately after weighing.
(c) All stock other than cattle sold on a liveweight basis are at the risk and expense of the buyer upon the fall of the hammer.
18. (a) Subject to this clause the sale is complete on the fall of the hammer.
(b) The time for rejection is the time commencing at the fall of the hammer and ending at the first of:
 - (i) Delivery is taken by a representative of the buyer;
 - (ii) Departure of the animal from the purchaser's delivery pen; or
 - (iii) One hour after the last animal is:
 - In the case of pre-sale weighing, sold; or
 - In the case of post-sale weighing, weighed.
- (c) During the time for rejection the buyer may reject any animal which is lame, blind or diseased where that condition existed prior to the fall of the hammer but could not be reasonably observed when the animal was in the selling pen.
- (d) If the purchaser rejects an animal during the time for rejection then the sale of that animal is cancelled and the animal is returned to the vendor or sold at such price as the purchaser and the agent may agree.
- (e) This sub-clause applies to cattle which are sold in Queensland at auction for slaughter. The agent has responsibility for the prevention of loss or escape (but not death, sickness or injury) of those cattle from the time of the fall of the hammer, through delivery to and from the scales, to the buyer's delivery pen and on to the buyer's nominated transport. This responsibility ends at the earlier of those cattle boarding the buyer's nominated transport or sunset on the day after the sale. This sub-clause does not apply if the agent makes an announcement to that effect prior to sale.
19. (a) Subject to the right of rejection in Clause 18, all conditions and warranties expressed or implied by law are hereby excluded from the sale to the extent that the law allows. All lots are open for inspection prior to the commencement of the sale and are sold with all faults, if any. No compensation shall be given for any faults, imperfections, errors of description, number in or of any lots sold or otherwise.
(b) Any claim or objection arising out of an error or misdescription in the provision of relevant information in terms of legislation or regulation concerning the National Livestock Identification Scheme (NLIS) must be made by 5:00pm on the seventh day after the fall of the hammer. No objection, requisition or claim against the vendor or agent in respect of such error or misdescription can be made after that time.
(c) Any statements made by the vendor or the auctioneer whether in writing or orally to the effect that any female has been pregnancy tested or scanned positive shall mean and require only that a certificate in writing shall be supplied to the buyer signed by a qualified veterinary surgeon or certified scanner certifying that the said female has been tested or scanned on the date specified in the certificate and that in the opinion of the surgeon or scanner the female was pregnant on that date.
(d) For cattle, the agent undertakes to make every reasonable effort to ensure that any NLIS cattle device number is transferred from the saleyard account to the purchaser's account on the NLIS database no later than midnight on the day of the sale.
(e) Where livestock have a food safety or market eligibility status derived from the NVD and/or the NLIS/ERP database, the agent will inform the buyers by presale catalogue in conjunction with vendor branding and/or announce the status prior to the offering of those lots.
20. If delivery is made to, or possession obtained by, the buyer or its representative before full payment of the purchase money, then until full payment is received, the buyer:

- (a) Does not acquire title to the stock;
 - (b) Holds the stock as bailee only for the vendor;
 - (c) Must act in a fiduciary capacity in its relationship with the vendor;
 - (d) Must store the stock separately or so that they are readily distinguishable from other stock owned by the buyer;
 - (e) Is responsible for the safety and well being of the stock;
 - (f) May make a bona fide sale for market value of any or all of the stock. As between the buyer and the subsequent buyer, the sale shall be made by the buyer in its own name and not as agent for the vendor, however as between the vendor and buyer, the sale shall be made as bailee and agent for the vendor; and
 - (g) Must keep and account for the proceeds of any subsequent sale separately from its other money and hold those proceeds, together with the benefits of any rights against subsequent buyers, on trust for the vendor.
21. In addition to clause 20, if payment is not made according to clause 15, but delivery has been made to, or possession obtained by, the buyer or its representative:
 - (a) The vendor or its agent may repossess and resell the stock and enter property owned or occupied by the buyer or its representative if necessary to do so; and
 - (b) Interest may be charged at the rate usually charged by the agent for overdue accounts on any amounts which remain owing at any time.
 22. The buyer may not make any claim against the vendor for actions by the vendor under clauses 20 or 21 and indemnifies the vendor against any loss, damage, costs, expenses, penalties, fines or claims suffered by the vendor or any person or entity arising from the vendor exercising its rights under clauses 20 or 21.
 23. Wherever the auctioneer pays the vendor before being paid by the buyer, the auctioneer is the del credere agent of the vendor and the parties acknowledge that all rights of the vendor as reserved hereunder are fully subrogated to the auctioneer. Nothing in these terms and conditions shall render the auctioneer in any way whatsoever liable to the buyer as vendor nor entitle the buyer to set off against the auctioneer any right the buyer may have against the vendor or otherwise.
 24. The auctioneer has been retained by the vendor as auctioneer for the purpose of selling the livestock comprised in the lots. The terms of engagement between the auctioneer and the vendor do not extend to the provision of advice by the auctioneer to the vendor in relation to the safety or otherwise of the sale ring, the saleyards and the surrounding environments.

CHAPTER THREE - WARRANTY FOR CORRECT PRESENTATION AND DECLARATION

25. This chapter applies only in the case of livestock and their companion animals sold at auction for slaughter when the buyer is the slaughterer and the livestock are transported direct from the sale yard to the meatworks at which they are slaughtered. This chapter does not apply if the buyer is a trader who subsequently resells the livestock to a slaughterer. A slaughterer is any person who pays the AMPC Processor levy.
26. The warranty of a vendor is that livestock and their companion animals offered for sale at auction:
 - (a) Pass AQIS and other regulatory authority requirements and inspections at the time of slaughter;
 - (b) Are of merchantable quality;
 - (c) Carry an NLIS device in accordance with State law;
 - (d) In the case where a representation has been made in the pre-sale catalogue that the livestock have particular characteristics or are fit for a particular purpose or market, and such representations are based on information in the National Vendor Declaration, the livestock will have those characteristics or will be fit for the particular purpose or market; and
 - (e) All information in any National Vendor Declaration provided by the vendor is true, complete and correct in all material respects.
27. In the event of a breach by the vendor of the vendor's warranty and provided such breach is notified by the buyer to the vendor's agent by 5:00pm on the 7th day after the fall of the hammer then the buyer is not liable to pay the purchase price of such of the vendor's livestock to which the breach applies.
28. However if the breach by the vendor is such that the livestock are not rejected outright but are instead downgraded then the buyer will pay the value of the livestock at their next highest and best use.
29. In the case of a breach by the vendor of the vendor's warranty then the vendor will also be liable to the buyer for any further losses which the buyer might establish but the buyer will take all reasonable steps in cooperation with the agent and vendor to mitigate both the effect of the breach and the amount of any loss.
30. Where a sentinel animal of a lot tests positive for chemical residue, and provided such test is certified and notified as required by these vendor warranty terms, then:
 - (a) The buyer will be entitled to delay payment for the price of all livestock in that lot; or
 - (b) The vendor has the option, at the vendor's cost, of collecting the companion animals and returning them to the vendor's property; or of having the stock slaughtered in which event the risk of further condemnations will be that of the vendor. Where product integrity is potentially jeopardised, the Processor has the right to refuse slaughter and send the livestock back to the consigning property at the vendor's cost.
31. The auctioneer is liable to the buyer in respect of any breach of the vendor's warranty arising out of:
 - (a) Any error, by the auctioneer, of transcription of information from the National Vendor Declaration completed by the vendor to the presale catalogue or the buyers post-sale summary;
 - (b) Any failure by the auctioneer to notify the buyer, prior to bidding, of any breach by the vendor of the warranty of the vendor if the buyer establishes that the agent knew of such breach prior to the sale; and
 - (c) Any failure by the auctioneer to disclose prior to bidding, and in the pre-sale catalogue, that the vendor has failed to provide a National Vendor Declaration that is complete in all material aspects.

CHAPTER FOUR - OWNERS RISK FOR CONDITION OF CATTLE

32. This chapter applies only in the case of cattle and their companion animals sold at auction for slaughter when the buyer is the slaughterer and the cattle are transported direct from the sale yard to the meatworks at which they are slaughtered. This chapter does not apply if the buyer is a trader who subsequently resells cattle to a slaughterer. A slaughterer is any person who pays the AMPC Processor levy.
33. Owners risk reflects the producer's responsibility to provide slaughter cattle for sale that are fit for human consumption. Cattle are fit for human consumption if they are not condemned as unfit by AQIS. Owners risk applies if the condemnation is due to a condition in the animal which the buyer establishes, by the AQIS certificate, existed prior to the fall of the hammer.
34. A buyer with the benefit of owners risk protection is not liable to pay the purchase price of that animal to the vendor. The buyer remains nevertheless liable for all costs incurred after the fall of the hammer in transport, slaughter, testing and disposal of the animal.
35. Owners risk protection is available to the buyer of cattle to which this chapter applies if all of the following are satisfied:
 - (a) A certificate is issued by AQIS which states the relevant NLIS RFID tag number and PIC, the date of the certificate, the reason for condemnation and that the reason for condemnation existed prior to the fall of the hammer;
 - (b) The certificate is received by the selling agent either in its original form or by fax by 5:00pm on the 7th day after the fall of the hammer; and
 - (c) If the condemnation is due to chemical residue the certificate follows testing in an AQIS approved laboratory which establishes maximum residue limits in excess of the Australian limit.
36. Owners risk does not apply, and the buyer must pay for the cattle, if the reason for condemnation is any of the following:
 - (a) Bruising,
 - (b) Fever,
 - (c) Partial Condemnation, or
 - (d) Emaciation.

BUYERS INSTRUCTION SLIP

(To be filled in and handed to the Instruction Office before leaving sale)

Name:

Address:

..... Postcode:

Telephone:

Send account to:

Lots purchased No.....Price:

No.....Price:

No.....Price:

No.....Price:

No.....Price:

Consign to:

When trucked advise:

.....

.....

DO YOU REQUIRE INSURANCE?

14 days..... 6 months..... 12 months

Signature of buyer:..... Date:

SPECIAL NOTICE TO BUYERS

In the interest of buyers, and to prevent the occurrence of mistakes, all instructions concerning the delivery, trucking or shipping and insurance of cattle must be given in writing and signed by the buyer or his representative.

NO VERBAL INSTRUCTIONS CAN BE ACCEPTED



DAIRY LIVESTOCK SERVICES

Tullamarine BC, PO Box 462, Tullamarine VIC 3043

Tel: (03) 9338 9259 - (03) 9338 9453 Fax: (03) 9338 9287

MERRYN ANDERSON 0417 361 782



If not claimed within seven days please return to -

DAIRY LIVESTOCK SERVICES

Tullamarine BC, PO Box 462, Tullamarine VIC 3043

**POSTAGE
PAID
AUSTRALIA**