

# Illawarra Sire Directory 2011

## OVENSDALE SCARLETS MARCEL



Code: SCARLET

\$20.00 + GST Per Dose

Rego: 4167 Y



Scarlet Dtr: Owned by Newton Family



Dam: Ovensdale Scarlet 99<sup>th</sup> - VG88



Scarlet Dtr: Owned by Newton Family

- No.1 Milk Production for all Red Breeds
- One of the Best for Ligament Strength, Teat Placement and Protein
- Great Type, Udders and Workabilities
- Great cow family with his dam 2nd to the IDW Champion in the On-Farm Challenge twice and next two dams have produced over 50,000 litres of lifetime Production

Sire: Marcel Red  
 Dam: Ovensdale Scarlet 99<sup>th</sup> - VG88  
 9144M 3.7% 342F 3.2% 294P  
 MGS: Ovensdale Pearls Cass  
 MGD: Ovensdale Scarlet 61 - VG86  
 53638M 4.3% 2291F 3.4% 1843P

### AUGUST ABV 2010

APR	Rel	ASI	Prot	Prot%	Milk	Fat	Fat%	Rel	Dtrs	Herds	Type	Mam	Rel	MS	Temp	Like	Rel	SCC	Rel
37	62	40	18	-0.23	1133	4	-0.63	69	35	15	109	108	55	103	104	104	63	73	56

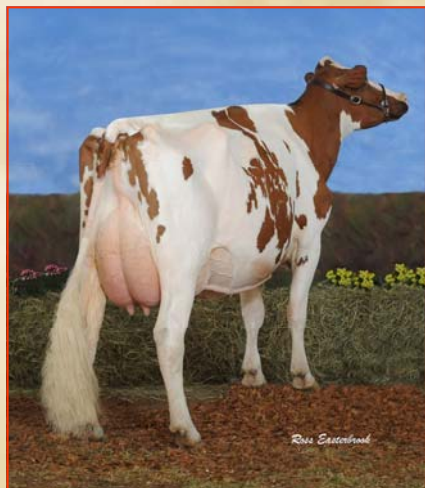
## GLENBROOK STARTRUMP



Code: STARTRUMP

\$20.00 + GST Per Dose

Rego: 3731 Z



Dtr: Winganna Startrump Handsome  
 -Reserve Champion Cow IDW 2010  
 -Colored Breeds Champion Cow, Melbourne Show 2010



Dam: Glenbrook Graceful 5 - EX3



Dtr: Jondene Nell 40

- Now with 100 daughters in his proof STARTRUMP holds firm amongst the Top APR sires in the Breed
- Good Type and Production sire who is siring IDW Champions
- His dam is one of Australia's greatest Illawarra cows, a Royal Champion and 4 x Real Australia with close to 100,000 litres of lifetime Production

Sire: Stadel - HF  
 Dam: Glenbrook Graceful 5 - EX3  
 10982M 4.5% 494F 3.0% 332P  
 MGS: Jondene Treasures Trump  
 MGD: Glen Haven Graceful 3 - VG

### AUGUST ABV 2010

APR	Rel	ASI	Prot	Prot%	Milk	Fat	Fat%	Rel	Dtrs	Herds	Type	Mam	Rel	MS	Temp	Like	Rel	SCC	Rel
84	78	67	8	-0.03	341	27	0.19	87	100	38	105	101	64	99	97	99	78	115	79



**Agri-Gene Pty Ltd**  
 123-125 TONE ROAD WANGARATTA VICTORIA 3677  
 Phone: 03 5722 2666 Fax: 03 5722 2777 Email: info@agri-gene.com.au





# Progeny Test Illawarra Sires for 2011

## MYRTLEHOLME MITCH - ET

Code: MITCHPRESS

\$10.00 + GST Per Dose or \$8.00 PT Price

Rego: 4664 Y



Sire: Silverleigh Churchill  
Dam: Myrtleholme Empress 32<sup>nd</sup> - EX91 3E  
305D 13472M 3.3% 444P 3.7% 500F  
MGS: Myrtleholme Kieran  
MGD: Myrtleholme Empress 29th  
362D 10966M 3.0% 326P 3.8% 418F

PT  
SIRE

-New Release Churchill son who descends from the Reserve All-Australian Champion - Myrtleholme Empress 32<sup>nd</sup> - EX91 3E  
-His dam was also crowned Queensland's Production Cow of the Year in 2009 - Lifetime Production 57,338 litres

Dam: Myrtleholme Empress 32<sup>nd</sup> - EX91 3E

## GLENBROOK TORNADO - ET

Code: GLENADO

\$10.00 + GST Per Dose or \$8.00 PT Price

Rego: 4463 Y



Sire: Silverleigh Monarch - ET  
Dam: Glenbrook Duchess 10<sup>th</sup> - EX3E  
305D 12687M 3.0% 383P 4.2% 535F  
MGS: Glenbrook Buttercups Reward  
MGD: Glenbrook Duchess 3<sup>rd</sup> - EX1E  
305D 9130M 3.2% 288P 4.0% 361F

PT  
SIRE

-Sired by Monarch who hails from the Glenbrook herd in SA  
-His dam Glenbrook Duchess 10<sup>th</sup> EX3E was crowned Champion Cow at Adelaide Royal in 2002, 2003, & 2005 and was the winner of the Australian Illawarra Photographic Competition in 2004 & 2005.

Dam: Glenbrook Duchess 10<sup>th</sup> - EX3E

## PANORAMA LANDMINE

Code: LANDMINE

\$10.00 + GST Per Dose or \$8.00 PT Price

Rego: 4459 Y



Sire: Silverleigh Monarch - ET  
Dam: Panorama Lady 47th - VG88  
305D 7554M 4.9% 370F 3.6% 271P  
MGS: Stadel - HF  
MGD: Panorama Lady 38th - EX1  
305D 7818M 4.18% 327F 3.43% 268P

PT  
SIRE

-Australian bull bred from an excellent cow family  
-Landmine combines his Dam's superb Components with his high Indexing sire Redmonarch  
-MGD's Credentials: 1st aged cow 2005 Real Australian photo competition and 3x Brisbane Royal Champion  
-Offers a unique pedigree for outcross breeding

MGD: Panorama Lady 38th - EX1, Dam: Panorama Lady 47th - VG88 & Panorama Landmine

In order to receive these sires at the PT Price of \$8.00, they need to be used in herds participating in Herd Recording & used in conjunction with our Proven or Super Sampler Sires.



# Super Sampler Illawarra Sires for 2011

## LLANDOVERY CROWNS MARVEL

Code: MARVERY

\$12.50 + GST Per Dose

Rego: 3886 Y



Sire: White Gates Triple Crown - ET  
Dam: Llandoverly Prince Marlene - VG86  
8854M 4.0% 356F 3.7% 325P  
MGS: Venvale Prince  
MGD: White Gates Marlene 4 - VG85  
8502M 3.6% 306F 3.3% 283P



Marvery is from the famous Marlene cow family at Llandoverly. His dam Llandoverly Prince Marlene VG86 won the 3-4 year old in milk class and 2nd best udder at the Shepparton Show in 2004. Semen has been exported to the USA and New Zealand. Generations of VG cows.

Triple Crown Dtr: Kangawarra Clarie 1545

## TREETON BAZOOKA

Code: BAZOOTON

\$12.50 + GST Per Dose

Rego: 4136 X



Sire: Fyn Cent  
Dam: Treeton Belinda 907 - VG87  
8489M 3.6% 308F 3.4% 292P  
MGS: Venvale Prince  
MGD: Treeton Belinda 494 - VG85  
48762M 3.7% 1815F 3.2% 1584P



Bazooton is from an excellent cow family, his dam Treeton Belinda 907 was Junior Champion at Murray Bridge, 3rd 2 years in milk at IDW and was an All-Australian finalist.

Dam: Treeton Belinda 907 - VG87

## KANGAWARRA SUNRISE - ET

Code: KGSUNRISE

\$12.50 + GST Per Dose

Rego: 4326 Z



Sire: Silverleigh Churchill  
Dam: Kangawarra Socks 2104<sup>th</sup> - VG  
365D 8920M 3.6% 319P 4.3% 385F  
MGS: Venvale Prince - ET  
MGD: Kangawarra Socks 7th  
305D 12417M 3.1% 390P 3.9% 481F



His dam Kangawarra Socks 2104<sup>th</sup> VG was crowned Reserve Champion Cow at Berry Show 2005/06, 1<sup>st</sup> 3/4yr Old in Milk Jamberoo Spring Fair 2004/05, 1<sup>st</sup> 3/4yr Old in Milk Sydney Royal 2005/06. Dam was also the No.1 ASI cow in 2005 and MGD was a former No.1 ASI cow for several years running.

Dam: Kangawarra Socks 2104<sup>th</sup> - VG

**Agri-Gene Pty Ltd**

123-125 TONE ROAD WANGARATTA VICTORIA 3677

Phone: 03 5722 2666 Fax: 03 5722 2777 Email: [info@agrigene.com.au](mailto:info@agrigene.com.au)





# Gold Label Illawarra Sire for 2011

## PANORAMA ARAMIS



Code: REDRAMA

Gold Label \$14.00 + GST Per Dose

Rego: 4336 X



Dam: Panorama Angeline 8<sup>th</sup> - EX

Dam's Sister: Panorama Angeline 9<sup>th</sup> - EX  
-Champion Cow Brisbane Royal 2009 & 2010

Sire: Llandovery Crowns Vigorous ET  
Dam: Panorama Angeline 8<sup>th</sup> - EX90 1E  
305D 9256L 4.5% 418F 3.2% 295P  
MGS: Lemon Grove Buttler ET  
MGD: Panorama Angeline 6<sup>th</sup> - VG88

Redrama is bred in the purple with his dam & his sire's maternal sister occupying the Champion and Reserve Champion positions at IDW 2008. Sired by LCVIGOROUS whose sister Llandovery Rangers Verbena 2<sup>nd</sup> EX - Champ Cow IDW in 2006 & 2007 & Reserve Champ Cow IDW 2008.

His dam is the impressive Angeline who was crowned Champion Cow at IDW 2008 & Reserve Champion Cow IDW 2007, Champion Cow Brisbane Royal 2005.



LCVigorous Sister: Llandovery Rangers Verbena 2<sup>nd</sup> EX

## AUSTRALIAN SHOW WINNING COW FAMILY



AGRI-GENE

Agri-Gene Pty Ltd

123-125 TONE ROAD WANGARATTA VICTORIA 3677

Phone: 03 5722 2666 Fax: 03 5722 2777 Email: [info@agrigene.com.au](mailto:info@agrigene.com.au)



AGRI-GENE