

ILLAWARRA SIRE DIRECTORY 2012

OVENSDALE SCARLETS MARCEL



NASIS CODE: SCARLET

REGO: 4167 Y



Dtr: Owned by Newton Family



Dam: Ovensdale Scarlet 99th - VG88



Dtr: Owned by Newton Family

~Great Type, Udders and Milk Production
 ~One of the Best for Ligament Strength and Teat Placement
 ~Superb Workabilities
 ~Great cow family with his dam 2nd to the IDW Champion in the On-Farm Challenge twice and next two dams have produced over 50,000 litres of lifetime Production

Sire: Marcel Red
Dam: Ovensdale Scarlet 99th - VG88
 9,144M 3.7% 342F 3.2% 294P
MGS: Ovensdale Pearls Cass
MGD: Ovensdale Scarlet 61 - VG86
 53,638M 4.3% 2291F 3.4% 1843P

AUGUST ABV 2011

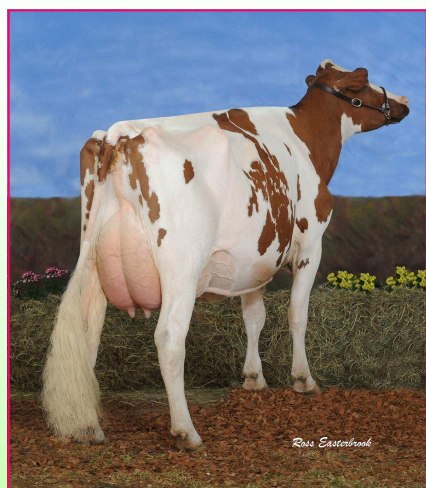
APR	Rel	ASI	Prot	Prot%	Milk	Fat	Fat%	Rel	Dtrs	Herds	Type	Mam	Rel	MS	Temp	Like	Rel	SCC	Rel
-20	72	-16	9	-0.24	813	-8	-0.61	81	63	24	113	110	33	103	104	104	69	49	70

GLENBROOK STARTRUMP



NASIS CODE: STARTRUMP

REGO: 3731 Z



Dtr: Winganna Startrump Handsome

~Reserve Champion Cow IDW 2010
 ~Coloured Breeds Champion Cow, Melbourne Royal Show 2010



Dam: Glenbrook Graceful 5 - EX3

~Good Type and Production sire who is siring IDW Champions

~His dam is one of Australia's greatest Illawarra cows, a Royal Champion and 4 x Real Australia with close to 100,000 litres of lifetime Production



Dtr: Jondene Nell 40

Sire: Stadel - HF
Dam: Glenbrook Graceful 5 - EX3
 10,982M 4.5% 494F 3.0% 332P
MGS: Jondene Treasures Trump
MGD: Glen Haven Graceful 3 - VG

AUGUST ABV 2011

APR	Rel	ASI	Prot	Prot%	Milk	Fat	Fat%	Rel	Dtrs	Herds	Type	Mam	Rel	MS	Temp	Like	Rel	SCC	Rel
40	80	35	3	-0.03	165	20	0.19	90	123	43	106	100	65	99	96	99	78	111	83

ILLAWARRA SIRE DIRECTORY 2012

RIVERSLEIGH GILHAM



NASIS CODE: MITCHPRESS



Dam: Riversleigh Monarch Gracie 15th - GP84

Sire: Treeton Lethal (Red Viking)
Dam: Riversleigh Monarch Gracie 15th - GP84
305D 7,829L 4.9% 381F 3.4% 271P (PI: 117)
MGS: Silverleigh Monarch - ET
MGD: Riversleigh Gracie 6th - VG86
305D 8,708L 3.8% 327F 3.3% 290P (PI: 112)

New
Sire

~New Release PT Sire Riversleigh Gilham is sired by the No.1 APR Sire in Red Viking and hails from Riversleigh Monarch Gracie 15th – GP84 who has won Intermediate Champion at Shepparton National Dairy Show in 2009 & 2010 - (1st 2 Year Old 2009, 1st 3 Year Old 2010) while at the same time is in the Top few cows in the country on ASI at +146.

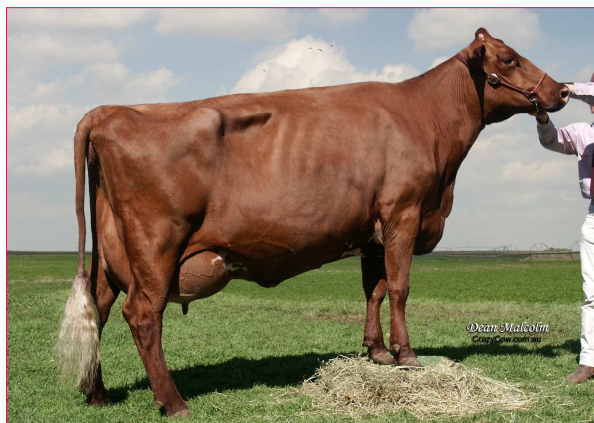
~This cow family always excels for Longevity & Protein%. Four direct Dams 3.4% Protein or better. 2nd dam is on her 7th lactation, and 3rd & 4th dams did 8 and 7 lactations respectively. 3rd dam also has an EX92 maternal sister that is about to begin her 7th Lactation.

GLENBROOK TORNADO - ET



NASIS CODE: GLENADO

REGO: 4463 Y



Dam: Glenbrook Duchess 10th - EX3E

Sire: Silverleigh Monarch - ET
Dam: Glenbrook Duchess 10th - EX3E
305D 12,687M 3.0% 383P 4.2% 535F
MGS: Glenbrook Buttercups Reward
MGD: Glenbrook Duchess 3rd - EX1E
305D 9,130M 3.2% 288P 4.0% 361F

~Sired by Monarch who hails from the Glenbrook herd in SA.

~His dam Glenbrook Duchess 10th EX3E was crowned Champion Cow at Adelaide Royal in 2002, 2003, & 2005 and was the winner of the Australian Illawarra Photographic Competition in 2004 & 2005.

MYRTLEHOLME MITCH - ET



NASIS CODE: MITCHPRESS

REGO: 4664 Y



Dam: Myrtleholme Empress 32nd – EX91 3E

Sire: Silverleigh Churchill
Dam: Myrtleholme Empress 32nd – EX91 3E
305D 13,472M 3.3% 444P 3.7% 500F
MGS: Myrtleholme Kieran
MGD: Myrtleholme Empress 29th
362D 10,966M 3.0% 326P 3.8% 418F

~New Release Churchill son who descends from the Reserve All-Australian Champion - Myrtleholme Empress 32nd – EX91 3E

~His dam was also crowned Queensland's Production Cow of the Year in 2009 – Lifetime Production 57,338 litres

ILLAWARRA SIRE DIRECTORY 2012

LLANDOVERY CROWNS MARVEL



NASIS CODE: MARVERY

REGO: 3886 Y



Sire: White Gates Triple Crown - ET
Dam: Llandoverly Prince Marlene - VG86
8854M 4.0% 356F 3.7% 325P
MGS: Venvale Prince
MGD: White Gates Marlene 4 - VG85
8502M 3.6% 306F 3.3% 283P

~Marvery is from the famous Marlene cow family at Llandoverly. His dam Llandoverly Prince Marlene VG86 won the 3-4 year old in milk class and 2nd best udder at the Shepparton Show in 2004. Semen has been exported to the USA and New Zealand.

~Generations of VG cows.

Triple Crown Dtr: Kangawarra Clarie 1545

TREETON BAZOOKA



NASIS CODE: BAZOOTON

REGO: 4136 X



Sire: Fyn Cent
Dam: Treeton Belinda 907 - VG87
8489M 3.6% 308F 3.4% 292P
MGS: Venvale Prince
MGD: Treeton Belinda 494 - VG85
48762M 3.7% 1815F 3.2% 1584P

~Bazooton is from an excellent cow family, his dam Treeton Belinda 907 was Junior Champion at Murray Bridge, 3rd 2 years in milk at IDW and was an All-Australian finalist.

Dam: Treeton Belinda 907 - VG87

KANGAWARRA SUNRISE - ET



NASIS CODE: KGSUNRISE

REGO: 4326 Z



Sire: Silverleigh Churchill
Dam: Kangawarra Socks 2104th - VG
365D 8920M 3.6% 319P 4.3% 385F
MGS: Venvale Prince - ET
MGD: Kangawarra Socks 7th
305D 12417M 3.1% 390P 3.9% 481F

~His dam Kangawarra Socks 2104th VG was crowned Reserve Champion Cow at Berry Show 2005/06, 1st 3/4yr Old in Milk Jamberoo Spring Fair 2004/05, 1st 3/4yr Old in Milk Sydney Royal 2005/06. Dam was also the No.1 ASI cow in 2005 and MGD was a former No.1 ASI cow for several years running.

Dam: Kangawarra Socks 2104th - VG



AGRI-GENE

Agri-Gene Pty Ltd

123-125 Tone Road, Wangaratta Victoria 3677

Ph: 03 5722 2666 Fax: 03 5722 2777 Email: info@agrigenes.com.au Website: www.agrigenes.com.au



AGRI-GENE

ILLAWARRA SIRE DIRECTORY 2012

PANORAMA ARAMIS

NASIS CODE: REDRAMA

REGO: 4336 X



Dam: Panorama Angeline 8th - EX



Sire: Llandovery Crowns Vigorous ET
Dam: Panorama Angeline 8th - EX90 1E
305D 9,256L 4.5% 418F 3.2% 295P
MGS: Lemon Grove Buttler ET
MGD: Panorama Angeline 6th - VG88



LCVigorous Sister:
Llandovery Rangers Verbena 2nd EX

~Redrama is bred in the purple with his dam & his sire's maternal sister occupying the Champion and Reserve Champion positions at IDW 2008. Sired by LCVIGOROUS whose sister Llandovery Rangers Verbena 2nd EX - Champ Cow IDW in 2006 & 2007 & Reserve Champ Cow IDW 2008.

~His dam is the impressive Angeline who was crowned Champion Cow at IDW 2008 & Reserve Champion Cow IDW 2007, Champion Cow Brisbane Royal 2005.

LLANDOVERY PRIDES PROPHET - ET

NASIS CODE: PRIDEPROPHET

REGO: 4592 Y



Dam: Llandovery Futurions GE Pride - EX

Sire: Winganna Handsome Tulip
Dam: Llandovery Futurions GE Pride - EX
305D 10,843M 3.93% 426F 3.10% 336P
MGS: Llandovery Jeans Futurion
MGD: White Gates GE Pride - ET VG88
362D 10,809M 3.90% 422F 3.28% 354P

Sexed
Semen
Available

~New Release Gold Label Sire who descends from Llandovery Futurions GE Pride - EX who was the 2009 IDW Champion Cow and Intermediate Champion Cow at IDW in 2005.

~Sired by Winganna Handsomes Tulip who is currently the No.8 APR Illawarra bull and has an ASI of 75. He has created much interest since his daughters have calved in, even more so since a daughter won Reserve Intermediate Champion at IDW this year.

~Sexed Semen Available