

# ILLAWARRA SIRE DIRECTORY 2013

## Proven Illawarra Sires

### OVENSDALE SCARLETS MARCEL



Nasis Code: SCARLET

\$25.00 + GST Per Dose

Rego #: 4167 Y

50% Illawarra



Sire: Marcel Red

Dam: Ovensdale Scarlet 99<sup>th</sup> - VG88

305D 9,144M 3.7% 342F 3.2% 294P

MGS: Ovensdale Pearls Cass

MGD: Ovensdale Scarlet 61 - VG86

53,638M 4.3% 2291F 3.4% 1843P (Lifetime)

Limited Semen  
Available

#### Equal No.2 Type Illawarra Sire in Australia

~Scarlet remains one of our Top selling Illawarra Sires, he is the equal No.2 Type and No.4 Udder Sire at +116 and +112 in the Top 30 APR Sires. He offers high Milk Production at +640M.

~Scarlet is one of the breeds best for improving Ligament Strength and Teat Placement along with good Workabilities, especially Milking Speed and Temperament at +103.

~Scarlet hails from a high productive cow family with his 2nd & 3rd dams producing over 50,000 Litres of lifetime Production. His dam; Ovensdale Scarlet 99<sup>th</sup> - VG88 has placed well in the Victorian Red Cow On-Farm Challenge Competition 2 years running.

Dtr: Clarefield OS Marcel Pauline 2846

~Champion & Reserve Supreme Champion Cow 2013 Brisbane Royal Show

~Champion Cow 2013 QLD Dairy Spectacular Gatton

~4th Overall 4 - 5 Years In-Milk; 2013 Real Australian Photographic Competition



Daughters Owned by Ovensdale Illawarra's, Vic



Dtr: Kangawarra Passion 3547 - VG85

~Res Intermediate Champion;  
2012 Brisbane Royal Show



Dam: Ovensdale Scarlet 99<sup>th</sup> - VG88

#### August ABV 2013

APR	ASI	Rel	Prot	Prot%	Milk	Fat	Fat%	Rel	Dtrs	Herds	Type	Mam	Rel	SCC	Rel
-78	80	-29	6	-0.22	640	-11	-0.56	89	107	37	116	112	66	32	81

## PANORAMA LANDMINE



Nasis Code: LANDMINE

\$20.00 + GST Per Dose

Rego #: 4459 Y

43.75% Illawarra



Sire: Silverleigh Monarch - ET

Dam: Panorama Lady 47<sup>th</sup> - VG88

305D 7,554M 4.9% 370F 3.6% 271P

MGS: Stadel - HF

MGD: Panorama Lady 38<sup>th</sup> - EX1

305D 7,818M 4.18% 327F 3.43% 268P

#### No.7 APR Illawarra Sire in Australia

~Landmine is an Australian bred bull from an Excellent Cow Family who offers a unique pedigree for outcross breeding. He is the No.7 APR Illawarra Sire with good Milk +264 and will improve Cell Counts.

~Landmine combines his Dam's high Components with his high Indexing Sire Red Monarch. His MGD's Credentials include: 1st Aged Cow in the 2005 Real Australian Photo Competition and a 3 time Brisbane Royal Champion.

~Reserve Junior Champion at the 2013 Sydney Royal was sired by Landmine.

Pictured Left: MGD: Panorama Lady 38<sup>th</sup> - EX1,  
Dam: Panorama Lady 47<sup>th</sup> - VG88 & Panorama Landmine

#### August ABV 2013

APR	ASI	Rel	Prot	Prot%	Milk	Fat	Fat%	Rel	Dtrs	Herds	MS	Temp	Like	Rel	SCC	Rel
47	59	80	13	0.11	264	8	-0.05	70	36	16	96	96	99	63	153	54



AGRI-GENE

Agri-Gene Pty Ltd

123-125 Tone Road, Wangaratta Victoria 3677

Ph: 03 5722 2666 Fax: 03 5722 2777 Email: info@agrigene.com.au Website: www.agrigene.com.au



AGRI-GENE



# ILLAWARRA SIRE DIRECTORY 2013

Proven Illawarra Sires

## KANGAWARRA SUNRISE - ET



Nasis Code: KGSUNRISE

\$20.00 + GST Per Dose

Rego #: 4326 Z

53.13% Illawarra



**Sire:** Silverleigh Churchill  
**Dam:** Kangawarra Socks 2104<sup>th</sup> - VG  
 365D 8,920M 4.3% 385F 3.6% 319P  
**MGS:** Venvale Prince - ET  
**MGD:** Kangawarra Socks 7th  
 305D 12,417M 3.9% 481F 3.1% 390P



[KGSunrise Progeny in Brazil](#)

**Dam:** Kangawarra Socks 2104<sup>th</sup> - VG

~KGSunrise is sired by high APR & Production Sire; Churchill and offers good honest Production with great Type +105 and Udders. He is ranked at No.5 on the Australian APR rankings from the latest August 2013 proofs.

~His dam: Kangawarra Socks 2104<sup>th</sup> - VG has been a very successful show cow who has won Reserve Champion Cow at Berry Show in 2005 & 2006, 1st 3-4 Year Old In-Milk at the Jamberoo Spring Fair in 2004 & 2005 and 1<sup>st</sup> 3-4 Year Old In-Milk at the Sydney Royal Show in 2005 & 2006. She was also the No.1 ASI cow in 2005 & MGD was a former No.1 ASI cow for several years running.

**August ABV 2013**

APR	ASI	Rel	Prot	Prot%	Milk	Fat	Fat%	Rel	Dtrs	Herds	Type	Mam	Rel	SCC	Rel
52	72	73	8	-0.02	362	30	0.21	84	81	30	105	100	51	86	70

## GLENBROOK STARTRUMP

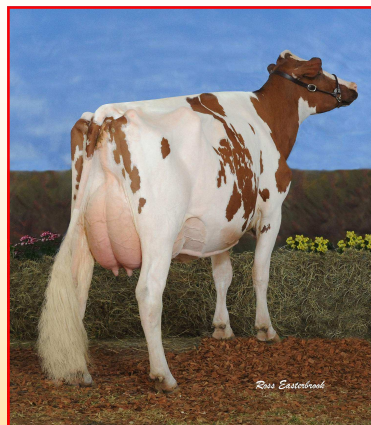


Nasis Code: STARTRUMP

\$15.00 + GST Per Dose

Rego #: 3731 Y

37.50% Illawarra



**Sire:** Stadel - HF  
**Dam:** Glenbrook Graceful 5 - EX3E  
 305D 10,982M 4.5% 494F 3.0% 332P  
**MGS:** Jondene Treasures Trump  
**MGD:** Glen Haven Graceful 3 - VG87



**Dtr:** Winganna Startrump Handsome

**Dam:** Glenbrook Graceful 5 - EX3E

**Dtr:** Jondene Nell 40

~Startrump is ranked amongst the Top 15 APR Sires in Australia with good Type +107 and Udder +103 ratings.

~He is siring IDW and Royal Show Champions. In particular the daughter pictured; Winganna Startrump Handsome was Reserve Champion Cow at IDW in 2010 and she was the Coloured Breeds Champion Cow at Melbourne Royal Show in 2010.

~His dam is one of Australia's greatest Illawarra cows, an Adelaide Royal Champion in 1996 and 1998 and 4 x Real Australia with close to 100,000 litres of lifetime Production.

**August ABV 2013**

APR	ASI	Rel	Prot	Prot%	Milk	Fat	Fat%	Rel	Dtrs	Herds	Type	Mam	Rel	SCC	Rel
2	85	6	-2	-0.04	18	14	0.18	93	181	56	107	103	68	114	87



AGRI-GENE

**Agri-Gene Pty Ltd**

123-125 Tone Road, Wangaratta Victoria 3677

Ph: 03 5722 2666 Fax: 03 5722 2777 Email: [info@agrigene.com.au](mailto:info@agrigene.com.au) Website: [www.agrigene.com.au](http://www.agrigene.com.au)



AGRI-GENE



# ILLAWARRA SIRE DIRECTORY 2013

Sexed Semen Available - Gold Label Sire

## LLANDOVERY PRIDES PROPHET - ET



Nasis Code: PRIDEPROPHET

Gold Label \$14.00 + GST Per Dose

Rego #: 4592 Y

A2/A2

50% Illawarra



Sire: Winganna Handsome Tulip

Dam: Llandovery Futurions GE Pride - EX90

305D 10,843M 3.93% 426F 3.10% 336P

MGS: Llandovery Jeans Futurion

MGD: White Gates GE Pride - ET VG88

362D 10,809M 3.90% 422F 3.28% 354P



~Prides Prophet is an A2/A2 Gold Label Sire who descends from Llandovery Futurions GE Pride - EX who was the 2009 IDW Champion Cow and Intermediate Champion Cow at IDW in 2005.

~He is sired by high Milk Production bull Winganna Handsomes Tulip who is currently the No.7 APR Illawarra bull.

~He has created much interest since his daughters have calved in, even more so since a daughter won Reserve Intermediate Champion at IDW in 2011.

**Sexed Semen Pricing**

**Sexed Semen Available \$60.00 + GST Per Dose**

**10+ Doses \$50.00 + GST Per Dose**

Dam: Llandovery Futurions GE Pride - EX90

Gold Label Sire

## PANORAMA ARAMIS



Nasis Code: REDRAMA

Gold Label \$14.00 + GST Per Dose

Rego #: 4336 X

68.75% Illawarra



Sire: Llandovery Crowns Vigorous - ET

Dam: Panorama Angeline 8<sup>th</sup> - EX90 1E

305D 9,256M 4.5% 418F 3.2% 295P

MGS: Lemon Grove Buttler ET

MGD: Panorama Angeline 6<sup>th</sup> - VG88



Dam: Panorama Angeline 8<sup>th</sup> - EX90

LCVigorous Sister: Llandovery Rangers Verbena 2<sup>nd</sup> EX

~Redrama is a Gold Label bull who is sired by high Type and Udder Specialist; LCVigorous, Redrama hails out of the impressive EX90 "Angeline" cow who was crowned Champion Cow at IDW in 2008 and Reserve Champion Cow at IDW in 2007. She was also crowned Champion Cow at the Brisbane Royal Show in 2005.

~Redrama is bred in the purple with his dam "Angeline" and his sire's maternal sister "Verbena" occupying the Champion and Reserve Champion positions at IDW in 2008. Redrama sired the Junior Champion at the 2013 Tasmanian Illawarra-Guernsey Calf Day; Joshlee Redrama Turv.



AGRI-GENE

**Agri-Gene Pty Ltd**

123-125 Tone Road, Wangaratta Victoria 3677

Ph: 03 5722 2666 Fax: 03 5722 2777 Email: info@agrigene.com.au Website: www.agrigene.com.au



AGRI-GENE



# ILLAWARRA SIRE DIRECTORY 2013

## Supplementary Sires RIVERSLEIGH GILHAM



Nasis Code: GILHAM

\$12.50 + GST Per Dose

Rego #: 4734

50% Illawarra



Dam: Riversleigh Monarch Gracie 15th - VG86

**Sire: Treeton Lethal (Red Viking)**

**Dam: Riversleigh Monarch Gracie 15th - VG86**

305D 9,939M 4.9% 489F 3.3% 332P (PI: 133)

**MGS: Silverleigh Monarch - ET (Red Monarch)**

**MGD: Riversleigh Gracie 6th - VG86**

305D 8,708M 3.8% 327F 3.3% 290P (PI: 112)

~Gilham is sired by the No.1 APR Sire in Red Viking and hails from Riversleigh Monarch Gracie 15<sup>th</sup> – VG86 who has broad ribbons to her name which include; Intermediate Champion at the Shepparton National Dairy Show in both 2009 and 2010.

~This Australian cow family is renowned for its superb Longevity and Protein%. Four direct dams have 3.4% Protein or better. His 2<sup>nd</sup> dam is on her 7<sup>th</sup> lactation, and 3<sup>rd</sup> & 4<sup>th</sup> dams both did 8 and 7 lactations respectively. His 3<sup>rd</sup> dam also has an EX92 maternal sister that is in her 7<sup>th</sup> Lactation.

~Gilham exhibits traditional Illawarra pigmentation, being dark red in colour with virtually no white markings.

## MYRTLEHOLME MITCH - ET



Nasis Code: MITCPRES

\$12.50 + GST Per Dose

Rego #: 4664 Y

46% Illawarra



Dam: Myrtleholme Empress 32<sup>nd</sup> – EX91 3E

**Sire: Silverleigh Churchill**

**Dam: Myrtleholme Empress 32<sup>nd</sup> – EX91 3E**

305D 13,472M 3.7% 500F 3.3% 444P

**MGS: Myrtleholme Kieran**

**MGD: Myrtleholme Empress 29th**

362D 10,966M 3.8% 418F 3.0% 326P

~Mitchpres is sired by high APR & Production Sire; Churchill from the 2010 Reserve All-Australian Champion Cow; Myrtleholme Empress 32<sup>nd</sup> – EX91 3E. She was also crowned Queensland's 2009 Production Cow of the Year; Lifetime Production 57,338L.



Sister to Mitchpres: Myrtleholme Empress 41



AGRI-GENE

**Agri-Gene Pty Ltd**

123-125 Tone Road, Wangaratta Victoria 3677

Ph: 03 5722 2666 Fax: 03 5722 2777 Email:



AGRI-GENE



# ILLAWARRA SIRE DIRECTORY 2013

## New Progeny Test Sires for 2013

### CLAREFIELD MILLMAN



Nasis Code: MILLMAN  
Rego #: 4702

PT Price: \$10.00 + GST Per Dose / Outside PT Price: \$12.50 + GST Per Dose  
43.75% Illawarra



Sire: Fyn Aks

Dam: Clarefield Monarch Milly 2611th - VG86

301D 10,962M 3.4% 378F 3.3% 363P (Cont)

MGS: Silverleigh Monarch - ET (Red Monarch)

MGD: Worthwhile Millie - EX90 4E

305D 11,728M 3.7% 430F 3.0% 357P



Dam: Clarefield Monarch Milly 2611th - VG86 (2nd Lact)

MGD: Worthwhile Millie - EX90 4E

- ~Champion Cow & Best Udder Kempsey Show 2004, 2005 & 2006
- ~Champion Cow & Best Udder Wauchope Show 2004, 2005 & 2006
- ~Res Supreme Champion / Supreme Best Udder Wauchope Show 2007

~Clarefield Millman is sired by Aussie Red Type and Udder Specialist; Fyn Aks, Millman hails out of a VG86 Red Monarch daughter that goes back to the much admired and world renowned "Worthwhile Millie - EX90 4E" cow who is highly regarded for her consistency of Type, Production and all-round Management Traits.

~Millman represents a balanced pedigree of Production, Type and Longevity.

### PANORAMA ANTICIPATION



Nasis Code: TBA  
Rego #: 4871

PT Price: \$10.00 + GST Per Dose / Outside PT Price: \$12.50 + GST Per Dose  
59.38% Illawarra



Dam: Panorama Angeline 9th - EX92

Sire: Panorama Landmine

Dam: Panorama Angeline 9th - EX92

305D 10,250M 3.7% 383F 3.2% 329P (PI: 117)

MGS: Lemon Grove Bygold - ET

MGD: Panorama Angeline 6th - VG88



~Anticipation is a New Release Progeny Test Sire for 2013 who is bred in the purple hailing from one of Australia's most successful show-type cow families, the "Angelines".

~He is an early son of Landmine who is the No.7 APR Illawarra Sire with good Milk, positive Components and will improve Cell Counts.

~His Dam; Panorama Angeline 9th - EX92 is a 4 time Brisbane Royal Champion and highly regarded in the Illawarra breed.

~His Dam is a Maternal Sister to Panorama Angeline 8th - EX90 who is the Dam of popular Agri-Gene Gold Label Specialist "REDRAMA". She was crowned Champion Cow at IDW in 2008 and Reserve Champion Cow at IDW in 2007. She was also crowned Champion Cow at the Brisbane Royal Show in 2005.



Maternal Sister to Dam: Panorama Angeline 8th - EX90



AGRI-GENE

Agri-Gene Pty Ltd

123-125 Tone Road, Wangaratta Victoria 3677

Ph: 03 5722 2666 Fax: 03 5722 2777 Email: info@agrigene.com.au Website: www.agrigene.com.au



AGRI-GENE