

ILLAWARRA SIRE DIRECTORY 2014

Proven Illawarra Sires

KANGAWARRA SUNRISE - ET



Nasis Code: KGSUNRISE

\$20.00 + GST Per Dose

Rego #: 4326 Z

53.13% Illawarra



Sire: Silverleigh Churchill
 Dam: Kangawarra Socks 2104th - VG
 365D 8,920M 4.3% 385F 3.6% 319P
 MGS: Venvale Prince - ET
 MGD: Kangawarra Socks 7th
 305D 12,417M 3.9% 481F 3.1% 390P



[KGSunrise Progeny in Brazil](#)

[Dam: Kangawarra Socks 2104th - VG](#)

~KGSunrise is sired by high APR & Production Sire; Churchill and offers good honest Production with great Type +105 and Udders. He is ranked at No.5 on the Australian APR rankings from the latest August 2013 proofs.

~His dam: Kangawarra Socks 2104th - VG has been a very successful show cow who has won Reserve Champion Cow at Berry Show in 2005 & 2006, 1st 3-4 Year Old In-Milk at the Jamberoo Spring Fair in 2004 & 2005 and 1st 3-4 Year Old In-Milk at the Sydney Royal Show in 2005 & 2006. She was also the No.1 ASI cow in 2005 & MGD was a former No.1 ASI cow for several years running.

[August ABV 2013](#)

APR	ASI	Rel	Prot	Prot%	Milk	Fat	Fat%	Rel	Dtrs	Herds	Type	Mam	Rel	SCC	Rel
52	72	73	8	-0.02	362	30	0.21	84	81	30	105	100	51	86	70

GLENBROOK STARTRUMP

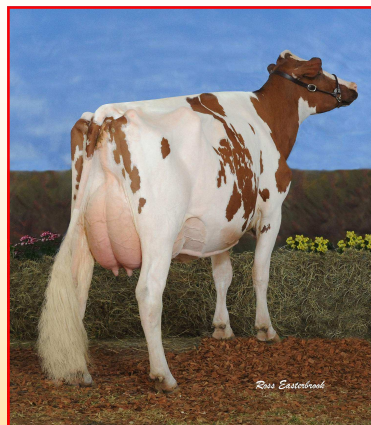


Nasis Code: STARTRUMP

\$15.00 + GST Per Dose

Rego #: 3731 Y

37.50% Illawarra



Sire: Stadel - HF
 Dam: Glenbrook Graceful 5 - EX3E
 305D 10,982M 4.5% 494F 3.0% 332P
 MGS: Jondene Treasures Trump
 MGD: Glen Haven Graceful 3 - VG87



[Dtr: Winganna Startrump Handsome](#)

[Dam: Glenbrook Graceful 5 - EX3E](#)

[Dtr: Jondene Nell 40](#)

~Startrump is ranked amongst the Top 15 APR Sires in Australia with good Type +107 and Udder +103 ratings.

~He is siring IDW and Royal Show Champions. In particular the daughter pictured; Winganna Startrump Handsome was Reserve Champion Cow at IDW in 2010 and she was the Coloured Breeds Champion Cow at Melbourne Royal Show in 2010.

~His dam is one of Australia's greatest Illawarra cows, an Adelaide Royal Champion in 1996 and 1998 and 4 x Real Australia with close to 100,000 litres of lifetime Production.

[August ABV 2013](#)

APR	ASI	Rel	Prot	Prot%	Milk	Fat	Fat%	Rel	Dtrs	Herds	Type	Mam	Rel	SCC	Rel
2	85	6	-2	-0.04	18	14	0.18	93	181	56	107	103	68	114	87



AGRI-GENE

Agri-Gene Pty Ltd

123-125 Tone Road, Wangaratta Victoria 3677

Ph: 03 5722 2666 Fax: 03 5722 2777 Email: info@agrigene.com.au Website: www.agrigene.com.au



AGRI-GENE

ILLAWARRA SIRE DIRECTORY 2014

Proven Illawarra Sire PANORAMA LANDMINE



Nasis Code: LANDMINE

\$20.00 + GST Per Dose

Rego #: 4459 Y

43.75% Illawarra



Sire: Silverleigh Monarch - ET
Dam: Panorama Lady 47th - VG88
 305D 7,554M 4.9% 370F 3.6% 271P
MGS: Stadel - HF
MGD: Panorama Lady 38th - EX1
 305D 7,818M 4.18% 327F 3.43% 268P

No.7 APR Illawarra Sire in Australia

~Landmine is an Australian bred bull from an Excellent Cow Family who offers a unique pedigree for outcross breeding.

~He is the No.7 APR Illawarra Sire with good Milk +264 and will improve Cell Counts.

~Landmine combines his Dam's high Components with his high Indexing Sire Red Monarch. His MGD's Credentials include: 1st Aged Cow in the 2005 Real Australian Photo Competition and a 3 time Brisbane Royal Champion.

Pictured Left: MGD: Panorama Lady 38th - EX1,
 Dam: Panorama Lady 47th - VG88 & Landmine

August ABV 2013

APR	ASI	Rel	Prot	Prot%	Milk	Fat	Fat%	Rel	Dtrs	Herds	MS	Temp	Like	Rel	SCC	Rel
47	59	80	13	0.11	264	8	-0.05	70	36	16	96	96	99	63	153	54

Supplementary Sires RIVERSLEIGH GILHAM



Nasis Code: GILHAM

\$14.00 + GST Per Dose

Rego #: 4734

50% Illawarra



Sire: Treeton Lethal (Red Viking)
Dam: Riversleigh Monarch Gracie 15th - VG86
 305D 9,939M 4.9% 489F 3.3% 332P (PI: 133)
MGS: Silverleigh Monarch - ET (Red Monarch)
MGD: Riversleigh Gracie 6th - VG86
 305D 8,708M 3.8% 327F 3.3% 290P (PI: 112)

~Gilham is sired by the No.1 APR Sire in Red Viking and hails from Riversleigh Monarch Gracie 15th - VG86 who has broad ribbons to her name which include; Intermediate Champion at the Shepparton National Dairy Show in both 2009 and 2010.

~This Australian cow family is renowned for its superb Longevity and Protein%. Four direct dams have 3.4% Protein or better. His 2nd dam is on her 7th lactation, and 3rd & 4th dams both did 8 and 7 lactations respectively. His 3rd dam also has an EX92 maternal sister that is in her 7th Lactation.

~Gilham exhibits traditional Illawarra pigmentation, being dark red in colour with virtually no white markings.

Dam: Riversleigh Monarch Gracie 15th - VG86

MYRTLEHOLME MITCH - ET

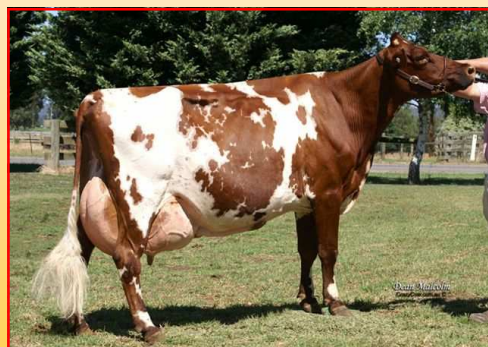


Nasis Code: MITCHPRESS

\$14.00 + GST Per Dose

Rego #: 4664 Y

46% Illawarra



Sire: Silverleigh Churchill
Dam: Myrtleholme Empress 32nd - EX91 3E
 305D 13,472M 3.7% 500F 3.3% 444P
MGS: Myrtleholme Kieran
MGD: Myrtleholme Empress 29th
 362D 10,966M 3.8% 418F 3.0% 326P

~Mitchpress is sired by high APR & Production Sire; Churchill from the 2010 Reserve All-Australian Champion Cow; Myrtleholme Empress 32nd - EX91 3E.

~She was also crowned Queensland's 2009 Production Cow of the Year; Lifetime Production 57,338L.

Dam: Myrtleholme Empress 32nd - EX91 3E



AGRI-GENE

Agri-Gene Pty Ltd

123-125 Tone Road, Wangaratta Victoria 3677

Ph: 03 5722 2666 Fax: 03 5722 2777 Email: info@agrigene.com.au Website: www.agrigene.com.au



AGRI-GENE

ILLAWARRA SIRE DIRECTORY 2014

Sexed Semen Available - Gold Label Sire

LLANDOVERY PRIDES PROPHET - ET



Nasis Code: PRIDEPROPHET Gold Label \$14.00 + GST Per Dose Rego #: 4592 Y (A2/A2) 50% Illawarra



Sire: Winganna Handsomes Tulip

Dam: Llandoverly Futurions GE Pride - EX90

305D 10,843M 3.93% 426F 3.10% 336P

MGS: Llandoverly Jeans Futurion

MGD: White Gates GE Pride - ET VG88

362D 10,809M 3.90% 422F 3.28% 354P



~Prides Prophet is an A2/A2 Gold Label Sire who descends from Llandoverly Futurions GE Pride - EX90 who was the 2009 IDW Champion Cow and Intermediate Champion Cow at IDW in 2005.

~He is sired by high Milk Production bull Winganna Handsomes Tulip who is currently the No.7 APR Illawarra bull.

~He has created much interest since his daughters have calved in, even more so since a daughter won Reserve Intermediate Champion at IDW in 2011.

Sexed Semen Pricing

Sexed Semen Available \$60.00 + GST Per Dose

10+ Doses \$50.00 + GST Per Dose

Dam: Llandoverly Futurions GE Pride - EX90

Gold Label Sire

PANORAMA ARAMIS



Nasis Code: REDRAMA Gold Label \$14.00 + GST Per Dose Rego #: 4336 X 68.75% Illawarra



Sire: Llandoverly Crowns Vigorous - ET

Dam: Panorama Angeline 8th - EX90 1E

305D 9,256M 4.5% 418F 3.2% 295P

MGS: Lemon Grove Buttler ET

MGD: Panorama Angeline 6th - VG88



Dam: Panorama Angeline 8th - EX90

LCVigorous Sister: Llandoverly Rangers Verbena 2nd EX

~Redrama is a Gold Label bull who is sired by high Type and Udder Specialist; LCVigorous, Redrama hails out of the impressive EX90 "Angeline" cow who was crowned Champion Cow at IDW in 2008 and Reserve Champion Cow at IDW in 2007. She was also crowned Champion Cow at the Brisbane Royal Show in 2005.

~Redrama is bred in the purple with his dam "Angeline" and his sire's maternal sister "Verbena" occupying the Champion and Reserve Champion positions at IDW in 2008. Redrama sired the Junior Champion at the 2013 Tasmanian Illawarra-Guernsey Calf Day; Joshlee Redrama Turv.



AGRI-GENE

Agri-Gene Pty Ltd

123-125 Tone Road, Wangaratta Victoria 3677

Ph: 03 5722 2666 Fax: 03 5722 2777 Email: info@agrigene.com.au Website: www.agrigene.com.au



AGRI-GENE

ILLAWARRA SIRE DIRECTORY 2014

Progeny Test Sires for 2014

CLAREFIELD MILLMAN



Nasis Code: MILLMAN
Rego #: 4702

PT Price: \$12.00 + GST Per Dose / Outside PT Price: \$15.00 + GST Per Dose
43.75% Illawarra



Sire: Fyn Aks

Dam: Clarefield Monarch Milly 2611th - VG86

301D 10,962M 3.4% 378F 3.3% 363P (Cont)

MGS: Silverleigh Monarch - ET (Red Monarch)

MGD: Worthwhile Millie - EX90 4E

305D 11,728M 3.7% 430F 3.0% 357P



Dam: Clarefield Monarch Milly 2611th - VG86 (2nd Lact)

MGD: Worthwhile Millie - EX90 4E

~Champion Cow & Best Udder Kempsey Show 2004, 2005 & 2006

~Champion Cow & Best Udder Wauchope Show 2004, 2005 & 2006

~Res Supreme Champion / Supreme Best Udder Wauchope Show 2007

~Clarefield Millman is sired by Aussie Red Type and Udder Specialist; Fyn Aks, Millman hails out of a VG86 Red Monarch daughter that goes back to the much admired and world renowned "Worthwhile Millie - EX90 4E" cow who is highly regarded for her consistency of Type, Production and all-round Management Traits.

~Millman represents a balanced pedigree of Production, Type and Longevity.

PANORAMA ANTICIPATION



Nasis Code: ANTICIPATION
Rego #: 4871

PT Price: \$12.00 + GST Per Dose / Outside PT Price: \$15.00 + GST Per Dose
59.38% Illawarra



Dam: Panorama Angeline 9th - EX92



Sire: Panorama Landmine

Dam: Panorama Angeline 9th - EX92

305D 10,250M 3.7% 383F 3.2% 329P (PI: 117)

MGS: Lemon Grove Bygold - ET

MGD: Panorama Angeline 6th - VG88



~Anticipation is a New Release Progeny Test Sire who is bred in the purple hailing from one of Australia's most successful show-type cow families, the "Angelines".

~He is an early son of Landmine who is the No.7 APR Illawarra Sire with good Milk, positive Components and will improve Cell Counts.

~His Dam; Panorama Angeline 9th - EX92 is a 4 time Brisbane Royal Champion and highly regarded in the Illawarra breed.

~His Dam is a Maternal Sister to Panorama Angeline 8th - EX90 who is the Dam of popular Agri-Gene Gold Label Specialist "REDRAMA". She was crowned Champion Cow at IDW in 2008 and Reserve Champion Cow at IDW in 2007. She was also crowned Champion Cow at the Brisbane Royal Show in 2005.

Maternal Sister to Dam: Panorama Angeline 8th - EX90



AGRI-GENE

Agri-Gene Pty Ltd

123-125 Tone Road, Wangaratta Victoria 3677

Ph: 03 5722 2666 Fax: 03 5722 2777 Email: info@agrigene.com.au Website: www.agrigene.com.au



AGRI-GENE