



End of an Era
Final Stage Complete Dispersal Sale



★ Lemon Grove Buttercup 204 EX2E ★ Lemon Grove Ruth 146 EX2E ★ Lemon Grove Honeymoon 15 EX2E

*** Monday, October 13th 2014 ***
11.30am on property, Tongala



~ Foreword ~

Welcome to the Final Stage Complete Dispersal Sale of the historic Lemon Grove Illawarra Stud.

As all would know we staged the 1st Stage Dispersal back in April selling the milking herd and the close heifers. These found new homes in Tasmania, South Australia, NSW and all parts of Victoria. Buyers from New Zealand and the United Kingdom also purchased. We are very pleased with reports of how they are performing for their new owners.

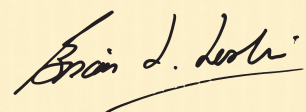
Lemon Grove was established more than 100 years ago back in 1906 and first exhibited at Sydney Royal in 1910. Much success came their way winning countless Champions at Sydney and also Brisbane and Melbourne Royals along with Shepparton Nationals and the famous Kiama Illawarra Shows.

Since moving to Victoria Lemon Grove have had amazing success at IDW winning Premier Breeder in 1999, 2002, 04, 05, 06, 08, 10, 12 & 13 and Premier Exhibitor in 1999, 2001, 02, 05, 06, 08, 09, 10 & 12.

Throughout this catalogue you will find all the well known Lemon Grove maternal lines that have been carefully bred for all these years represented. Many sell from dams with outstanding production over 10,000 litres.

The Lemon Grove bloodline has been to the fore throughout the Illawarra World for so long, we are very sure this exceptional line of heifers will do themselves proud wherever they may go.

We look forward to seeing you at this historic end of an era event.



Brian Leslie
Auctioneer

DIRECTIONS: From Tongala go East on Finlay Rd, take Curr Rd right then take Matheson Rd left.
Lemon Grove is 1st on left. Watch for DLS signs.



End of an Era Final Sale of the historic
Lemon Grove Illawarra's

More than 100 years of breeding

"One of the most famous Illawarra breeding herds ever"

Monday, October 13th 2014

11.30am – On property – 1312 Matheson Road, TONGALA

A/c CR Chittick (Lemon Grove) Pty Ltd

Laurie & Sandra Chittick 03 5859 0074

email: lemongrove 22@bigpond.com

A light luncheon and breakfast will be available by the Tongala Lions Club

TERMS: Interest free terms are available to buyers who apply to the agents no later than October 9th, 2014.

To buyers spending \$10,000 or more. 50% deposit, 25% due 13/1/15, 25% due 13/4/15.



All cattle are vaccinated annually with 7 in 1.
and drenched with Fasinex and Cydectin Pour On.
Herd JD Score 7 - ELB Negative

*** 91 Head will sell plus Embryos ***

2 Illawarra Cows

32 Joined Illawarra Heifers • 52 Unjoined Illawarra Heifers

7 Embryo lots • 5 Holstein x heifers

Sale to be conducted by Dairy Livestock Services



A RURALCO PARTNER

Tullamarine BC
PO Box 462, Tullamarine VIC 3043

MERRY ANDERSON
Tel: (03) 9338 9259 - (03) 9338 9453
manderson@dairylivestockservices.com.au

Sale contacts —

Brian Leslie 0418 365 934

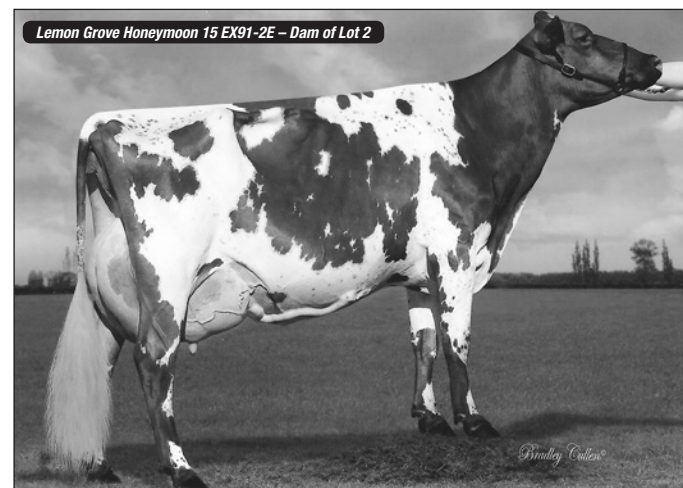
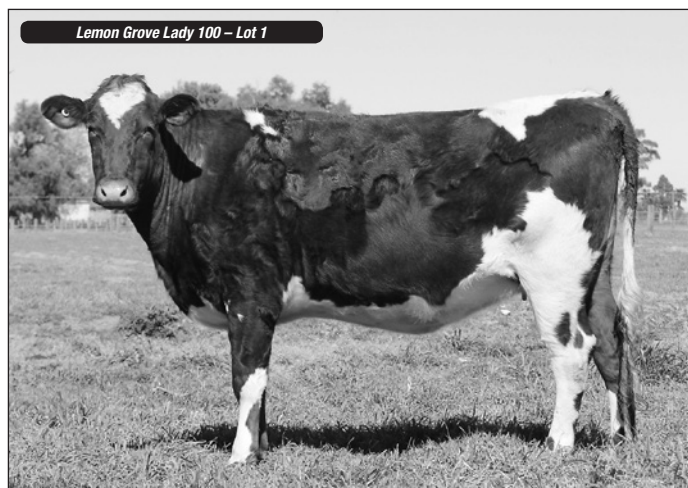
Lee Hamilton 0418 352 366

Ben Minogue 0438 145 926

**FEEL FREE TO CONTACT ANY OF THE ABOVE
SALE PERSONNEL. YOUR ENQUIRIES WILL
BE DEALT WITH THE UTMOST CONFIDENCE.
PHONE BIDDING IS AVAILABLE.**

~ Index ~

- | | | | |
|-----|---------------------------|-----|---|
| 1. | Lemon Grove Lady 100 | 52. | Lemon Grove Buttercup 357 |
| 2. | Lemon Grove Honeymoon 43 | 53. | Lemon Grove Buttercup 366 |
| 3. | Lemon Grove Honeymoon 38 | 54. | Lemon Grove Princess 783 |
| 4. | Lemon Grove Honeymoon 39 | 55. | Lemon Grove Princess 788 |
| 5. | Lemon Grove Honeymoon 41 | 56. | Lemon Grove Princess 787 |
| 6. | Lemon Grove Honeymoon 46 | 57. | Lemon Grove Princess 780 |
| 7. | Lemon Grove Honeymoon 40 | 58. | Lemon Grove Princess 781 |
| 8. | Lemon Grove Honeymoon 44 | 59. | Lemon Grove Princess 790 |
| 9. | Lemon Grove Honeymoon 45 | 60. | Lemon Grove Princess 779 |
| 10. | Lemon Grove Honeymoon 48 | 61. | Lemon Grove Princess 782 |
| 11. | Lemon Grove Honeymoon 42 | 62. | Lemon Grove Princess 778 |
| 12. | Lemon Grove Honeymoon 47 | 63. | Lemon Grove Princess 785 |
| 13. | Lemon Grove Margaret 178 | 64. | Lemon Grove Princess 791 |
| 14. | Lemon Grove Margaret 174 | 65. | Lemon Grove Princess 784 |
| 15. | Lemon Grove Margaret 176 | 66. | Lemon Grove Princess 786 |
| 16. | Lemon Grove Margaret 177 | 67. | Lemon Grove Princess 789 |
| 17. | Lemon Grove Margaret 179 | 68. | Lemon Grove Princess 792 |
| 18. | Lemon Grove Margaret 171 | 69. | Lemon Grove Princess 793 |
| 19. | Lemon Grove Margaret 175 | 70. | Lemon Grove Princess 795 |
| 20. | Lemon Grove Margaret 180 | 71. | Lemon Grove Princess 794 |
| 21. | Lemon Grove Ruth 175 | 72. | Lemon Grove Ethel 301 |
| 22. | Lemon Grove Ruth 176 | 73. | Lemon Grove Ethel 302 |
| 23. | Lemon Grove Ruth 182 | 74. | Lemon Grove Beauty 22 |
| 24. | Lemon Grove Ruth 179 | 75. | Lemon Grove Beauty 26 |
| 25. | Lemon Grove Ruth 177 | 76. | Lemon Grove Myra 9 |
| 26. | Lemon Grove Ruth 181 | 77. | Lemon Grove Beauty 23-ET |
| 27. | Lemon Grove Ruth 185 | 78. | Lemon Grove Beauty 25-ET |
| 28. | Lemon Grove Ruth 180 | 79. | Lemon Grove Violet 4 |
| 29. | Lemon Grove Ruth 183 | 80. | Lemon Grove Violet 8 |
| 30. | Lemon Grove Ruth 184 | 81. | Lemon Grove Violet 5 |
| 31. | Lemon Grove Buttercup 350 | 82. | Lemon Grove Violet 7 |
| 32. | Lemon Grove Buttercup 314 | 83. | Lemon Grove Violet 6 |
| 33. | Lemon Grove Buttercup 359 | 84. | Lemon Grove Molly |
| 34. | Lemon Grove Buttercup 351 | 85. | Lemon Grove Laura 3 |
| 35. | Lemon Grove Buttercup 363 | 86. | Lemon Grova Ida 4 |
| 36. | Lemon Grove Buttercup 361 | 87. | Unreg Holstein heifer |
| 37. | Lemon Grove Buttercup 352 | 88. | Unreg Holstein heifer |
| 38. | Lemon Grove Buttercup 367 | 89. | Grade xbred heifer |
| 39. | Lemon Grove Buttercup 348 | 90. | Grade xbred heifer |
| 40. | Lemon Grove Buttercup 356 | 91. | Unjoined heifer |
| 41. | Lemon Grove Buttercup 355 | | |
| 42. | Lemon Grove Buttercup 349 | | EMBRYOS - Dam: Lemon Grove Ruth 154 VG |
| 43. | Lemon Grove Buttercup 360 | 92. | 8 x Panorama Aramis |
| 44. | Lemon Grove Buttercup 364 | 93. | 2 x Silverleigh Monarch |
| 45. | Lemon Grove Buttercup 353 | 94. | 23 x Panorama Royal Treble |
| 46. | Lemon Grove Buttercup 365 | 95. | 14 x Panorama Aramis |
| 47. | Lemon Grove Buttercup 369 | 96. | 14 x Llandover Verbs Viscount |
| 48. | Lemon Grove Buttercup 354 | 97. | 2 Embryos - Dam: LG Margaret 162 VG88 |
| 49. | Lemon Grove Buttercup 368 | | 1 x Panorama Aramis 1 x Panorama Royal Treble |
| 50. | Lemon Grove Buttercup 362 | 98. | 3 Embryos - Helix x Kurraroo Beauty 19 VG87 |
| 51. | Lemon Grove Buttercup 358 | 99. | 150 Straws of Lemon Grove Buttlar |



LOT 1

LEMON GROVE LADY 100

Reg: 140803 DOB: 6/1/12 Tattoo: CRC 350
P/W Llandovery Jets Vigil from 16/2/14

sire **LEMON GROVE BLAZING PROMISE-ET**

100% Illawarra. Virgins Promise son of Buttercup 204 EX, 3 times
All Australian winner, etc.

dam **LEMON GROVE LADY 97 VG86**

68	9031	292	3.2	373	4.1	192	cont
----	------	-----	-----	-----	-----	-----	------

when sold at our herd dispersal

2nd sire **FABER**

2nd dam **LEMON GROVE LADY 94 VG87**

63	10280	320	3.1	406	3.9	305	133
----	-------	-----	-----	-----	-----	-----	-----

Buyer:\$

LOT 2

LEMON GROVE HONEYMOON 43

Reg: 144243 DOB: 31/10/13 Tattoo: CRC 411
*Lot 2 combines all three cows featured on the front cover -
Honeymoon 15, Ruth 146 and Buttercup 204!*

sire **LEMON GROVE BELAGIO**

Kakadu son of Buttercup 259 VG, over 100,000 litres

dam **LEMON GROVE HONEYMOON 15 EX91-2E**

47	10471	374	3.6	473	4.5	353	113
62	11668	373	3.2	434	3.7	334	125
74	13234	414	3.1	487	3.7	328	126

- 1st 5yrs in milk IDW 2010
- 1st Aged Cow in milk IDW 2011
- 1st Aged Cow, Best Udder, Champion Cow and Grand Champion IDW 2012.
- Res Champion Dow IDW 2014

Sold to Craig Rapley of New Zealand

2nd sire **LEMON GROVE BUTTLER-ET**

2nd dam **LEMON GROVE HONEYMOON 10 GP**

71	5589	180	3.2	221	4.0	305
----	------	-----	-----	-----	-----	-----

3rd sire **Horizon Ranger**

3rd dam **Lemon Grove Honeymoon 2 GP**

71	5746	179	3.1	217	3.8	305
----	------	-----	-----	-----	-----	-----

4th dam

Parkview Honeymoon 9 VG

- Champion Heifer in milk Shepparton National 1991 and Res Melbourne 1991.

5th dam

Parkview Honeymoon 4 EX

- Champion Cow Sydney Royal 1988
- Maternal sister to Honeymoon 6 EX, Champion Cow Sydney, Adelaide and Melbourne Royals.

Buyer:\$

LOT 3

LEMON GROVE HONEYMOON 38

Reg: 140802 DOB: 2/1/12 Tattoo: CRC 348
P/W Llandovery Jets Vigil from 16/2/14 PTIC

sire **LEMON GROVE BLAZING PROMISE-ET - See lot 1**

dam **LEMON GROVE HONEYMOON 26 VG87**

38	11103	366	3.6	416	3.8	305	116
----	-------	-----	-----	-----	-----	-----	-----

- 5th 4yrs in milk IDW 2013

2nd sire **LEMON GROVE KAKADU**

2nd dam **LEMON GROVE HONEYMOON 18 VG88 - See lot 5**

Buyer:\$

LOT 4

LEMON GROVE HONEYMOON 39

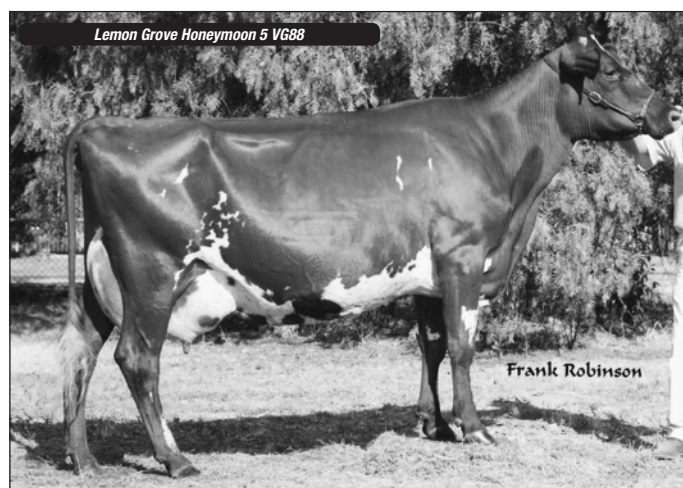
Reg: 142390 DOB: 4/11/12 Tattoo: CRC 377
P/W Lemon Grove Hoffman from 8/8/14

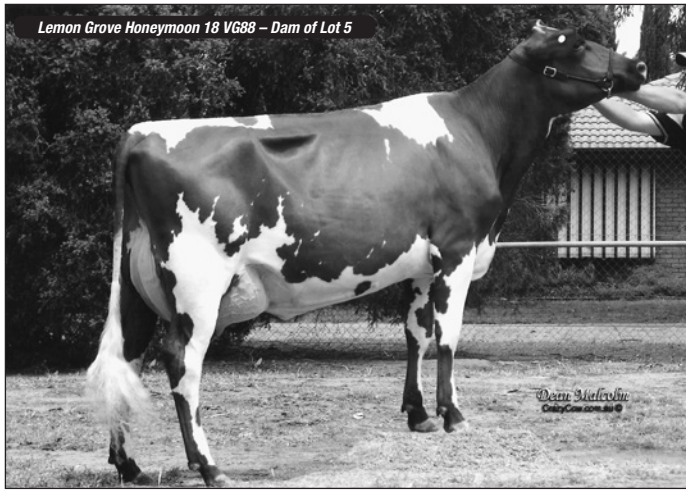
sire **PANORAMA ROYAL TREBLE**

APR +79

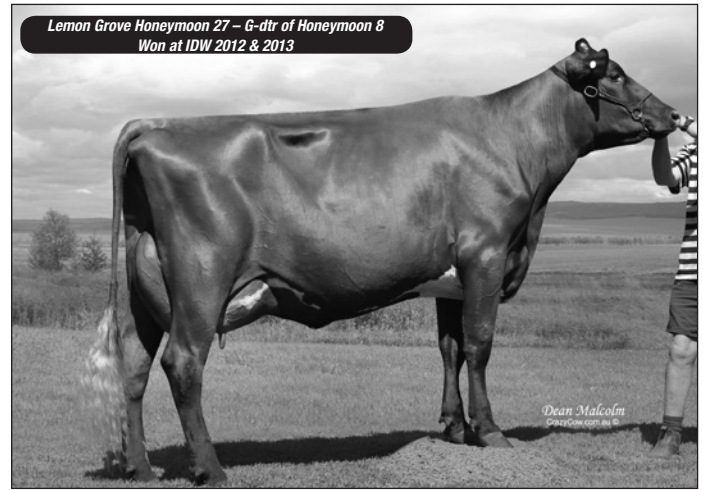
dam **LEMON GROVE HONEYMOON 26 VG87 - See lot 3**

Buyer:\$





Lemon Grove Honeymoon 18 VG88 – Dam of Lot 5



Lemon Grove Honeymoon 27 – G-dtr of Honeymoon 8
Won at IDW 2012 & 2013

LOT 5

LEMON GROVE HONEYMOON 41

Reg: 142394 DOB: 6/1/13 Tattoo: CRC 381

sire LEMON GROVE KAKADU

Son of Ruth 146 EX - 2 times IDW Champion

By Biestar the son of Buttercup 204 EX, 3 times All Aust. winner

dam LEMON GROVE HONEYMOON 18 VG88

65	13769	462	3.4	533	3.9	373	131
78	12781	457	3.6	540	4.2	376	126
91	11422	369	3.2	469	4.1	314	125

• 2nd 2½yrs in milk IDW 2008

• 2nd 4yrs in milk IDW 2009

2nd sire FABER

2nd dam LEMON GROVE HONEYMOON 6 VG86

10	10544	349	3.3	461	4.4	305	
----	-------	-----	-----	-----	-----	-----	--

3rd sire Lemon Grove Bearkey

3rd dam Lemon Grove Honeymoon 5 VG88

106	10801	333	3.1	406	3.8	305	132
-----	-------	-----	-----	-----	-----	-----	-----

4th dam Parkview Honeymoon 9 VG

Buyer:\$

LOT 6

LEMON GROVE HONEYMOON 46

Reg: 144252 DOB: 2/1/14 Tattoo: CRC 420

sire LEMON GROVE BELAGIO - See lot 2

dam LEMON GROVE HONEYMOON 18 VG88 - See lot 5

Buyer:\$

LOT 7

LEMON GROVE HONEYMOON 40

Reg: 142391 DOB: 10/11/12 Tattoo: CRC 378

P/W Lemon Grove Hoffman from 8/8/14

sire OVENS DALE SCARLETS MARCEL

ABV +647 Litres +113 Type +110 Udders

dam LEMON GROVE HONEYMOON 28 GP83

43	13589	453	3.3	517	3.8	432	117
----	-------	-----	-----	-----	-----	-----	-----

2nd sire LEMON GROVE KAKADU

2nd dam LEMON GROVE HONEYMOON 14 VG

57	8817	330	3.7	417	4.7	395	
----	------	-----	-----	-----	-----	-----	--

3rd dam Lemon Grove Honeymoon 6 VG - See lot 5

Buyer:\$

LOT 8

LEMON GROVE HONEYMOON 44

Reg: 144245 DOB: 24/11/13 Tattoo: CRC 413

sire OVENS DALE SCARLETS MARCEL - See lot 7

dam LEMON GROVE HONEYMOON 30

32	8705	273	3.1	314	3.6	384	
----	------	-----	-----	-----	-----	-----	--

2nd sire PATIENCE SHOWLINE CONTENDER-RED

2nd dam LEMON GROVE HONEYMOON 6 VG - See lot 5

Buyer:\$

LOT 9

LEMON GROVE HONEYMOON 45

Reg: 144248 DOB: 31/12/13 Tattoo: CRC 416

sire

LLANDOVERY JETS VIGIL-ET

Jet-Red son of Rangers Verben 2 EX - IDW Champion Cow

dam

LEMON GROVE HONEYMOON 36

Sold at our herd dispersal on 1st lact

2nd sire

VENTNOR MINERVAS PROMISE

2nd dam

LEMON GROVE HONEYMOON 19 VG - See lot 10

Buyer:\$

LOT 10

LEMON GROVE HONEYMOON 48

Reg: 144259 OC DOB: 22/2/14 Tattoo: CRC 427

sire

LEMON GROVE SHOWMAN 2

100% Illawarra. May's Principle son of Ventnor Minerva 6th -

Sydney Royal Champion Cow

dam

LEMON GROVE HONEYMOON 19 VG

27	6353	219	3.4	270	4.2	355	
----	------	-----	-----	-----	-----	-----	--

2nd sire

MARKWELL KITE

2nd dam

LEMON GROVE HONEYMOON 6 VG - See lot 5

Buyer:\$

LOT 11

LEMON GROVE HONEYMOON 42

Reg: 142403 DOB: 16/4/13 Tattoo: CRC 390

sire

LEMON GROVE KAKADU - See lot 5

dam

LEMON GROVE HONEYMOON 8 VG88

70	9866	309	3.4	366	3.4	310	121
----	------	-----	-----	-----	-----	-----	-----

2nd sire

HELIX GG

2nd dam

LEMON GROVE HONEYMOON 2 GP - See lot 2

Buyer:\$



Lemon Grove Honeymoon 16 VG88
Maternal sister to 2nd dam of Lot 12



LOT 12 LEMON GROVE HONEYMOON 47
 Reg: 144253 DOB: 6/1/14 Tattoo: CRC 421
 sire Llandovery Jets Vigil-ET - See lot 9
 dam LEMON GROVE HONEYMOON 37
 Sold at our herd dispersal on 1st lact
 2nd sire LEMON GROVE SUNSET DUKE-ET
 2nd dam LEMON GROVE HONEYMOON 29 GP
 28 11728 425 3.6 499 4.3 415 130
 3rd sire Lemon Grove Buttler-ET
 3rd dam Lemon Grove Honeymoon 8 VG - See lot 11
 Buyer:\$

dam LEMON GROVE MARGARET 170
 27 8371 264 3.2 280 3.3 370
 2nd sire GLENBROOK KOSCIUSKO
 2nd dam LEMON GROVE MARGARET 164 EX - See lot 13
 Buyer:\$

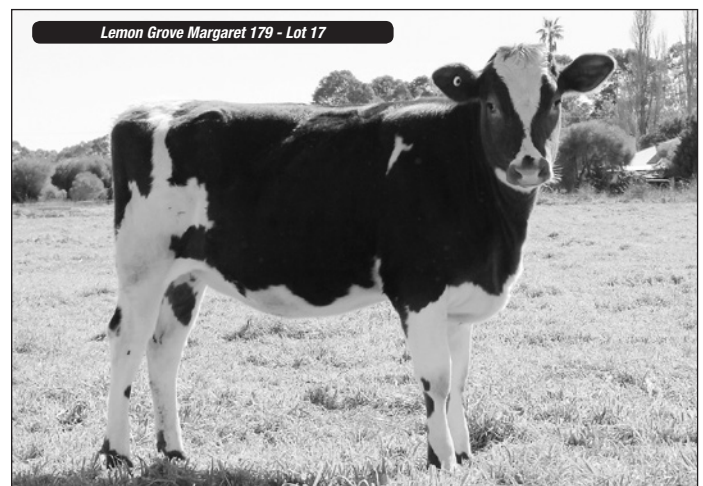
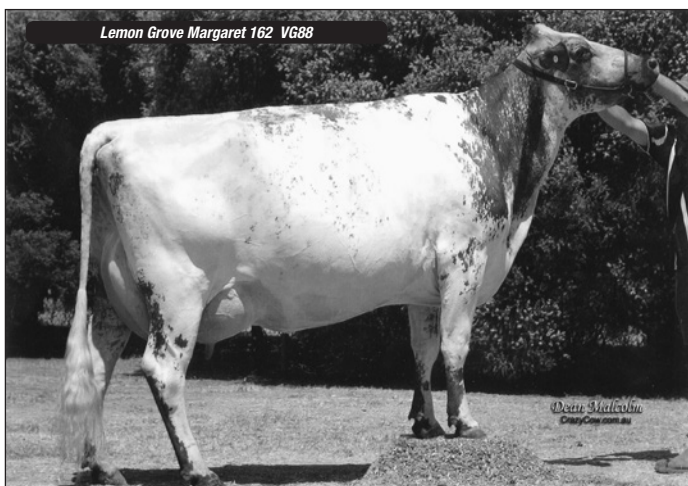
LOT 13 LEMON GROVE MARGARET 178
 Reg: 144236 DOB: 13/9/13 Tattoo: CRC 404
 sire LEMON GROVE KAKADU - See lot 5
 dam LEMON GROVE MARGARET 164 EX
 60 10883 360 3.3 406 3.7 330 138
 73 12334 393 3.2 457 3.7 313 126
 Total 52461 2555 3.1 2859 3.5 2435 125
 • 2nd 2yrs dry IDW 2005 • 2nd 5yrs in milk IDW 2008
 • 3rd Aged Cow in milk IDW 2009 & 2010
 2nd sire SUNNY VIEW PRINCESS MARIO
 2nd dam LEMON GROVE MARGARET 162 VG88
 81 11029 335 3.0 379 3.4 370 141
 • 1st Aged Cow and Res Champion Cow IDW 2006
 • All Australian Aged Cow 2007
 3rd sire Helix GG
 3rd dam Lemon Grove Margaret 153
 46 5746 182 3.2 234 4.1 305
 Buyer:\$

LOT 15 LEMON GROVE MARGARET 176
 Reg: 142410 DOB: 6/5/13 Tattoo: CRC 397
 sire BLACKWOOD PARK BLITZ
 ABV +113 Type
 dam LEMON GROVE MARGARET 170 - See lot 14
 Buyer:\$

LOT 16 LEMON GROVE MARGARET 177
 Reg: 144231 DOB: 18/6/13 Tattoo: CRC 399
 sire LEMON GROVE PURE RAMAGE
 Redlou son of Princess 732 VG87 by Tenor (see lot 54)
 dam LEMON GROVE MARGARET 169 GP82
 45 8688 266 3.1 301 3.5 290
 2nd sire SILVERLEIGH MONARCH-ET
 2nd dam LEMON GROVE MARGARET 162 VG - See lot 13
 Buyer:\$

LOT 17 LEMON GROVE MARGARET 179
 Reg: 144237 DOB: 18/9/13 Tattoo: CRC 405
 sire LEMON GROVE BELAGIO - See lot 2
 dam LEMON GROVE MARGARET 168 VG87 1st lact
 52 8735 257 3.9 303 3.4 198 cont
 when sold at our herd dispersal sale.
 • 4th 5yrs in milk IDW 2014.
 • Sold for \$5000 K & C Gass
 2nd sire SUNNYVIEW PRINCESS MARIO
 2nd dam LEMON GROVE MARGARET 163 VG - See lot 18
 Buyer:\$

LOT 14 LEMON GROVE MARGARET 174
 Reg: 140830 DOB: 25/3/12 Tattoo: CRC 357
 P/W Llandovery Jets Vigil from 16/2/14 PTIC
 sire LEMON GROVE SUNSET DUKE-ET
 Silverleigh Monarch son of Margaret 162 -
 Res Champion Cow IDW etc.





LOT 18

LEMON GROVE MARGARET 171

Reg: 138117 DOB: 24/9/10 ID: 2179

Age	Milk	Prt	P%	Fat	F%	Days
31	8775	277	3.1	316	3.6	340

• Joined 12/6/14 PTIC to Llandoverly Jets Vigil

sire
dam

BLACKWOOD PARK BLITZ - See lot 15

LEMON GROVE MARGARET 163 VG

110	12525	358	2.9	410	3.3	350	112
-----	-------	-----	-----	-----	-----	-----	-----

By Lemon Grove Bygold

2nd dam

LEMON GROVE MARGARET 162 VG88 - See lot 13

Buyer:\$.....

LOT 19

LEMON GROVE MARGARET 175

Reg: 142408 DOB: 29/4/13 Tattoo: CRC 395

sire
dam

LEMON GROVE SUNSET DUKE-ET - See lot 14

LEMON GROVE MARGARET 171 - Sells as lot 18

Buyer:\$.....

LOT 20

LEMON GROVE MARGARET 180

Reg: 144242 DOB: 12/10/13 Tattoo: CRC 410

sire
dam

LEMON GROVE BELAGIO - See lot 2

LEMON GROVE MARGARET 165 VG86

86	13343	408	3.1	515	3.9	356	121
----	-------	-----	-----	-----	-----	-----	-----

2nd sire

LEMON GROVE PARDNER

2nd dam

LEMON GROVE MARGARET 163 VG - See lot 18

Buyer:\$.....

LOT 21

LEMON GROVE RUTH 175

Reg: 140823 DOB: 27/2/12 Tattoo: CRC 343

P/W Llandoverly Jets Vigil from 16/2/14 PTIC

sire
dam

LEMON GROVE SUNSET DUKE-ET - See lot 14

LEMON GROVE RUTH 166-ET

29	11348	363	3.2	481	4.2	515	119
----	-------	-----	-----	-----	-----	-----	-----

ASI +129

2nd sire

SILVERLEIGH MONARCH-ET

2nd dam

LEMON GROVE RUTH 154 VG

51	9227	316	3.4	386	4.2	286	132
----	------	-----	-----	-----	-----	-----	-----

3rd sire

Venvale Prince-ET

3rd dam

Lemon Grove Ruth 146 EX2E

57	10649	338	3.2	405	3.8	130
----	-------	-----	-----	-----	-----	-----

69	11683	347	3.0	441	3.8	347
----	-------	-----	-----	-----	-----	-----

• 1st 2½yrs in milk IDW 2002

• 1st 5yrs, 1st Best Udder and Grand Champ Cow IDW 2004

• 1sgt Aged Cow, 1st Best Udder and Grand Champ Cow IDW 2005

• Twice OFC Champion

by GGHelix

4th dam

Lemon Grove Ruth 119 VG

Buyer:\$.....

LOT 22

LEMON GROVE RUTH 176

Reg: 140829 DOB: 19/3/12 Tattoo: CRC 355

P/W Llandoverly Jets Vigil from 16/2/14 PTIC

sire
dam

LEMON GROVE SUNSET DUKE-ET - See lot 14

LEMON GROVE RUTH 168

29	7981	264	3.3	305	3.8	362
----	------	-----	-----	-----	-----	-----

2nd sire

TREETON PIMP

2nd dam

LEMON GROVE RUTH 157 VG

43	13314	482	3.6	581	4.4	392	142
----	-------	-----	-----	-----	-----	-----	-----

79	13552	440	3.2	488	3.6	308	134
----	-------	-----	-----	-----	-----	-----	-----

91	12648	407	3.2	460	3.6	344	123
----	-------	-----	-----	-----	-----	-----	-----

3rd sire

SFL Lyon-Red

3rd dam

Lemon Grove Ruth 133 VG86

83	9744	317	3.3	369	3.8	305	118
----	------	-----	-----	-----	-----	-----	-----

Buyer:\$.....

LOT 23

LEMON GROVE RUTH 182

Reg: 142405 DOB: 21/4/13 Tattoo: CRC 392

sire

LEMON GROVE BUTTLER-ET

Sire of IDW & Royal Show Champions all over Australia.

Milestone x Buttercup 204 EX

ABV +110 Type

dam

LEMON GROVE RUTH 168 - See lot 22

Buyer:\$.....

LOT 24

LEMON GROVE RUTH 179

Reg: 140814 DOB: 16/8/12 Tattoo: CRC 372

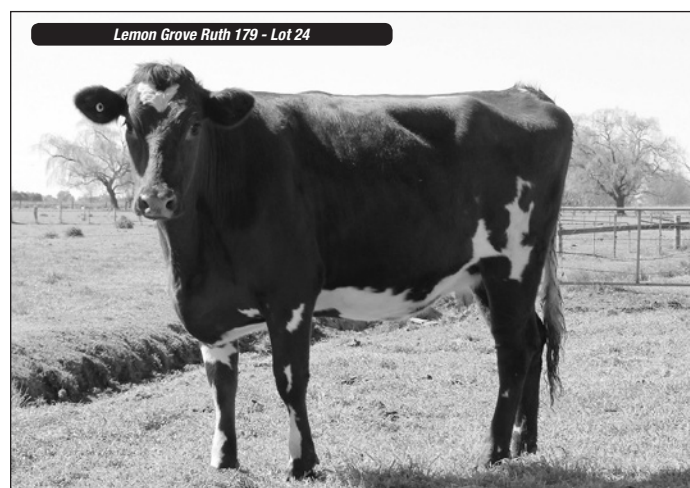
P/W Lemon Grove Hoffman from 8/8/14

sire
dam

PANORAMA ROYAL TREBLE - See lot 4

LEMON GROVE RUTH 157 VG - See lot 22

Buyer:\$.....



LOT 25**LEMON GROVE RUTH 177**

Reg: 140831 DOB: 25/3/12 Tattoo: CRC 358

P/W Llandovery Jets Vigil from 16/2/14 PTIC

LEMON GROVE SUNSET DUKE-ET *See lot 14*sire
dam

LEMON GROVE RUTH 167

2nd sire

BLACKWOOD PARK BLITZ

2nd dam

LEMON GROVE RUTH 153 VG87

60 12306 411 3.3 539 4.4 368 122

100 11245 358 3.2 414 3.7 333 111

3rd sire

Lemon Grove Bullet-ET

3rd dam

Lemon Grove Ruth 148 VG

96 10686 362 3.4 482 4.5 305 123

Buyer:\$.....

LOT 26**LEMON GROVE RUTH 181**

Reg: 142400 DOB: 30/3/13 Tattoo: CRC 387

OVENSDALE SCARLETS MARCEL - *See lot 7*sire
dam

LEMON GROVE RUTH 169

28 8394 266 3.2 299 3.6 316 110

2nd dam

LEMON GROVE RUTH 162 GP - *See lot 27*

Buyer:\$.....

LOT 27**LEMON GROVE RUTH 185**

Reg: 144241 DOB: 6/10/13 Tattoo: CRC 409

LEMON GROVE KAKADU - *See lot 5*sire
dam

LEMON GROVE RUTH 162 GP

70 10882 343 3.2 429 3.9 338 106

2nd sire

SUNNY VIEW PRINCESS MARIO

2nd dam

LEMON GROVE RUTH 153 VG87 - *See lot 25*

Buyer:\$.....

LOT 28**LEMON GROVE RUTH 180**

Reg: 142386 DOB: 24/9/12 Tattoo: CRC 373

P/W Lemon Grove Hoffman from 8/8/14

LEMON GROVE SUNSET DUKE-ET - *See lot 14*sire
dam

LEMON GROVE RUTH 170

30 6117 192 3.1 209 3.4 318

2nd sire

LEMON GROVE MEDALLION

2nd dam

LEMON GROVE RUTH 164

3rd sire

Panorama Royal Treble

3rd dam

Lemon Grove Ruth 153 VG87 - *See lot 25*

Buyer:\$.....

LOT 29**LEMON GROVE RUTH 183**

Reg: 144232 DOB: 13/8/13 Tattoo: CRC 400

LEMON GROVE KAKADU - *See lot 5*sire
damLEMON GROVE RUTH 164 - *See lot 28*

Buyer:\$.....

LOT 30**LEMON GROVE RUTH 184**

Reg: 144240 OC DOB: 6/10/13 Tattoo: CRC 408

LEMON GROVE SHOWMAN 2 - *See lot 10*sire
dam

LEMON GROVE RUTH 160 VG86

68 14550 411 2.8 484 3.5 514 105

2nd sire

MARKWELL KITE

2nd dam

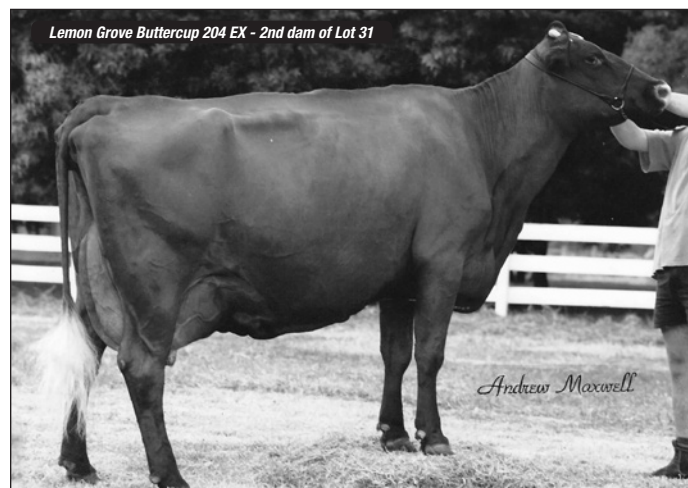
LEMON GROVE RUTH 144 GP84

90 10455 307 2.9 386 3.7 305 140

3rd dam

Lemon Grove Ruth 126 VG

Buyer:\$.....



Lemon Grove Buttercup 204 EX - 2nd dam of Lot 31

LOT 31**LEMON GROVE BUTTERCUP 350**

Reg: 140898 DOB: 16/5/12 Tattoo: CRC 362

P/W Llandovery Jets Vigil from 16/2/14 PTIC

SUNNY VIEW THELMAS PRINCE

100% Illawarra. Very successful sire of his era

LEMON GROVE BUTTERCUP 271-ET VG87

108 13044 400 3.1 467 3.6 355 118

LADY-S MANOR PRODIGY-RED

LEMON GROVE BUTTERCUP 204 EX2E

6.7 9560 340 3.6 402 4.2 305

7.8 11069 378 3.4 448 4.1 305

- Champion Cow Royal Melbourne, Sydney Royal, Shepparton National, etc.

- 3 times Real Australian winner

Tabbagong Redpath

Lemon Grove Buttercup 170

7 Lacts: 38959L - 1304 kgsP - 1397 kgsF

By Navilloween Tenor

- Full sister to Lemon Grove Buttercup 157 VG88, Champion Cow Sydney Royal, Shepparton National and Jamberoo Spring Fair.

3rd sire

3rd dam

Buyer:\$.....

LOT 32**LEMON GROVE BUTTERCUP 314**

Reg: 130231 X DOB: 21/2/08 Tattoo: CRC 218

Age	Milk	Prt	P%	Fat	F%	Days	PI
60	10611	323	3.0	360	3.4	353	104

Joined 20/6/14 Llandovery Jets Vigil PTIC

SUNNY VIEW PRINCESS MARIO

One of the greatest Illawarra sires ever

LEMON GROVE BUTTERCUP 260-ET VG

47 8121 251 3.1 317 3.9 322 109

LADYS-MANOR PRODIGY-RED

LEMON GROVE BUTTERCUP 204 EX2E - *See lot 31*

Buyer:\$.....

LOT 33**LEMON GROVE BUTTERCUP 359**

Reg: 142409 DOB: 2/5/13 Tattoo: CRC 396

LEMON GROVE SUNSET DUKE-ET - *See lot 14*

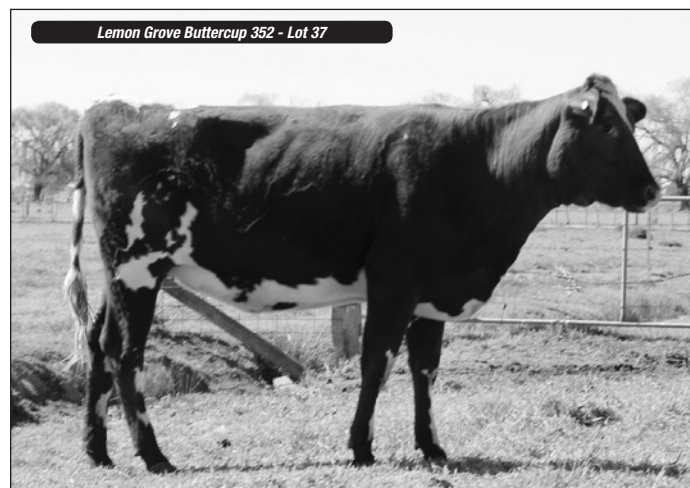
LEMON GROVE BUTTERCUP 330

31 9133 282 3.1 321 3.5 337 111

LEMON GROVE RELIX

LEMON GROVE BUTTERCUP 314 GP - *See lot 32*

Buyer:\$.....



LOT 34 LEMON GROVE BUTTERCUP 351
 Reg: 140806 DOB: 22/5/12 Tattoo: CRC 363
 P/W Llandovery Jets Vigil from 16/2/14 PTIC
 sire **BEAULANDS HILLY**
 APR +165
 dam **LEMON GROVE BUTTERCUP 286 VG**
 83 10759 357 3.3 410 3.8 327 109
 2nd sire **FABER**
 2nd dam **LEMON GROVE BUTTERCUP 250 VG**
 143 7478 242 3.2 290 3.9 290
 Full sister to Beorky
 3rd dam **Lemon Grove Buttercup 204 EX2E - See lot 31**
 Buyer:\$

LOT 37 LEMON GROVE BUTTERCUP 352
 Reg: 140812 DOB: 7/7/12 Tattoo: CRC 369
 P/W Lemon Grove Hoffman from 8/8/14
 sire **LEMON GROVE KAKADU - See lot 5**
 dam **LEMON GROVE BUTTERCUP 259 VG86 (By Goldie)**
 151 16829 536 3.2 657 3.9 558 135
 Lifetime: 100,066 litres - 3347 kgsP - 3872 kgsF
 2nd dam **LEMON GROVE BUTTERCUP 204 EX2E - See lot 31**
 Buyer:\$

LOT 35 LEMON GROVE BUTTERCUP 363
 Reg: 144247 DOB: 5/12/13 Tattoo: CRC 415
 sire **LEMON GROVE KAKADU - See lot 5**
 dam **LEMON GROVE BUTTERCUP 286 VG - See lot 34**
 Buyer:\$

LOT 38 LEMON GROVE BUTTERCUP 367
 Reg: 144257 DOB: 17/2/14 Tattoo: CRC 425
 sire **LEMON GROVE KAKADU - See lot 5**
 dam **LEMON GROVE BUTTERCUP 259 VG86 - See lot 37**
 Buyer:\$

LOT 36 LEMON GROVE BUTTERCUP 361
 Reg: 144233 DOB: 18/8/13 Tattoo: CRC 401
 sire **LEMON GROVE SUNSET DUKE-ET - See lot 14**
 dam **LEMON GROVE BUTTERCUP 334 GP81**
 31 7612 230 3.0 229 3.0 229 cont
 when sold at our herd dispersal
 2nd sire **LEMON GROVE RELIX**
 2nd dam **LEMON GROVE BUTTERCUP 315 GP**
 45 6584 205 3.1 252 3.8 301
 3rd sire **Sunny View Princess Mario**
 3rd dam **Lemon Grove Buttercup 250-ET VG - See lot 34**
 Buyer:\$

LOT 39 LEMON GROVE BUTTERCUP 348
 Reg: 140826 DOB: 16/1/12 Tattoo: CRC 351
 P/W Llandovery Jets Vigil from 16/2/14 PTIC
 sire **LEMON GROVE SUNSET DUKE-ET - See lot 14**
 dam **LEMON GROVE BUTTERCUP 303 GP (by Faber)**
 76 7813 267 3.4 350 4.5 321
 2nd dam **LEMON GROVE BUTTERCUP 281**
 98 8537 272 3.2 362 4.2 330
 3rd sire **Lemon Grove Buttler-ET**
 3rd dam **Lemon Grove Buttercup 248 VG (by Helix)**
 107 11070 329 3.0 408 3.7 305 134
 Buyer:\$

LOT 40 LEMON GROVE BUTTERCUP 356
 Reg: 142401 DOB: 30/3/13 Tattoo: CRC 388
 sire **LEMON GROVE KAKADU - See lot 5**
 dam **LEMON GROVE BUTTERCUP 303 GP - See lot 39**
 Buyer:\$





LOT 41 LEMON GROVE BUTTERCUP 355
 Reg: 142397 DOB: 3/1/13 Tattoo: CRC 384
 sire LEMON GROVE SHOWMAN 2 - *See lot 10*
 dam LEMON GROVE BUTTERCUP 281 VG - *See lot 39*
 Buyer:\$

LOT 42 LEMON GROVE BUTTERCUP 349
 Reg: 140833 DOB: 2/5/12 Tattoo: CRC 361
 P/W Llandovery Jets Vigil from 16/2/14 PTIC
 sire LEMON GROVE SUNSET DUKE-ET - *See lot 14*
 dam LEMON GROVE BUTTERCUP 327 GP84
 42 8157 282 3.4 310 3.8 329
 2nd sire BLACKWOOD PARK BLITZ
 2nd dam LEMON GROVE BUTTERCUP 265 GP
 128 10032 319 3.2 372 3.7 305
 3rd sire Lemon Grove Buttlr-ET
 3rd dam Lemon Grove Buttercup 255 GP
 36 5446 171 3.1 223 4.1 305
 Buyer:\$

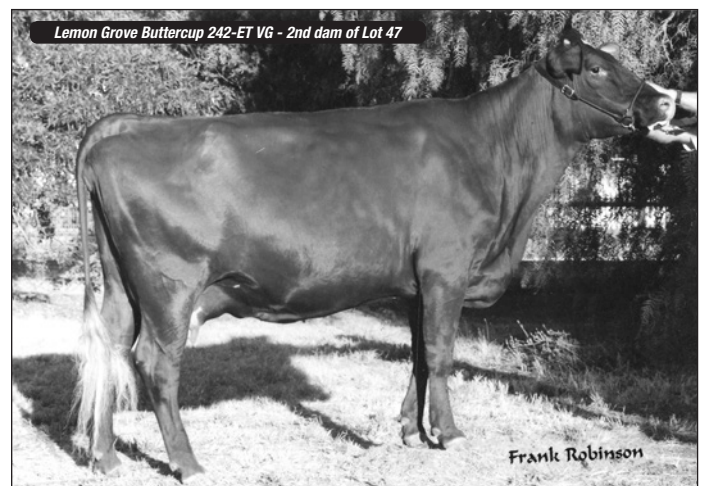
LOT 43 LEMON GROVE BUTTERCUP 360
 Reg: 142411 DOB: 10/5/13 Tattoo: CRC 398
 sire OVENS DALE SCARLETS MARCEL - *See lot 7*
 dam LEMON GROVE BUTTERCUP 327 GP84 - *See lot 42*
 Buyer:\$

LOT 44 LEMON GROVE BUTTERCUP 364
 Reg: 144250 DOB: 2/1/14 Tattoo: CRC 418
 sire LLANDOVERY JETS VIGIL-ET - *See lot 9*
 dam LEMON GROVE BUTTERCUP 343 GP
 28 3062 85 2.8 111 3.5 92 cont
 when sold at our herd dispersal
 2nd sire LEMON GROVE RELIX
 2nd dam LEMON GROVE BUTTERCUP 265 GP - *See lot 42*
 Buyer:\$

LOT 45 LEMON GROVE BUTTERCUP 353
 Reg: 142389 DOB: 4/10/12 Tattoo: CRC 376
 P/W Lemon Grove Hoffman from 8/8/14
 sire FIELDHOUSE REDLOU EX90
 dam Talent x EX91 Red Marker. Sire of 18 EX Dtrs in Canada
 2nd sire LEMON GROVE BUTTERCUP 320-ET
 2nd dam TABBAGONG REDPATH
 LEMON GROVE BUTTERCUP 297
 32 9771 317 3.2 376 3.8 305 121
 3rd sire Sunny View Princess Mario
 3rd dam Lemon Grove Buttercup 270 VG87
 73 13119 430 3.3 493 3.8 411 135
 4th dam Lemon Grove Buttercup 251-ET VG87
 5th dam Lemon Grove Buttercup 204 EX2E - *See lot 31*
 Buyer:\$

LOT 46 LEMON GROVE BUTTERCUP 365
 Reg: 144254 DOB: 10/12/13 Tattoo: CRC 422
 sire LEMON GROVE KAKADU - *See lot 5*
 dam LEMON GROVE BUTTERCUP 256 VG89
 124 8318 300 3.6 378 4.5 412
 2nd sire SUNTOR KENT (HF)
 2nd dam LEMON GROVE BUTTERCUP 243-ET VG85
 3rd sire Wilmington Virgins Promise
 3rd dam Lemon Grove Buttercup 204 EX2E - *See lot 31*
 Buyer:\$

LOT 47 LEMON GROVE BUTTERCUP 369
 Reg: 144262 DOB: 15/3/14 Tattoo: CRC 430
 sire LEMON GROVE KAKADU - *See lot 5*
 dam LEMON GROVE BUTTERCUP 282 VG
 60 10964 385 3.5 484 4.4 326 121
 2nd sire ORIGIN (HF)
 2nd dam LEMON GROVE BUTTERCUP 242-ET VG
 2.8 9013 292 3.2 323 3.6 305
 • 1st Dry Cow & Champion Production Cow IDW 1999
 3rd sire Wilmington Kittys Reflect
 3rd dam Lemon Grove Buttercup 204 EX2E - *See lot 31*
 Buyer:\$



Lemon Grove Buttercup 354 - Lot 48



LOT 48

LEMON GROVE BUTTERCUP 354

Reg: 142396 DOB: 4/1/13 Tattoo: CRC 383

sire	BLACKWOOD PARK BLITZ - See lot 15						
dam	LEMON GROVE BUTTERCUP 317 VG86						
	40	7632	258	3.4	311	4.1	337
2nd sire	PANORAMA ROYAL TREBLE						
2nd dam	LEMON GROVE BUTTERCUP 261 VG86						
	99	10837	372	3.4	429	4.0	314 117
3rd sire	Ladys-Manor Prodigy-Red						
3rd dam	Lemon Grove Buttercup 226 VG86						
	90	6903	214	3.1	276	4.0	305 113
4th dam	Lemon Grove Buttercup 204 EX2E						

Buyer:\$

LOT 49

LEMON GROVE BUTTERCUP 368

Reg: 144261 DOB: 20/3/14 Tattoo: CRC 429

sire	LEMON GROVE KAKADU - See lot 5						
dam	LEMON GROVE BUTTERCUP 317 VG86 - See lot 48						

Buyer:\$

LOT 50

LEMON GROVE BUTTERCUP 362

Reg: 144234 DOB: 18/8/13 Tattoo: CRC 402

sire	LEMON GROVE SUNSET DUKE-ET - See lot 14						
dam	LEMON GROVE BUTTERCUP 335 GP82						
	31	8390	257	3.0	282	3.4	229c 117
	when sold at our herd dispersal						
	• 2nd 2½yrs in milk & 1st Best Udder of class IDW 2014						
	• Sold for \$4750 to D Ashe of Girgarre.						
2nd sire	LEMON GROVE RELIX						
2nd dam	LEMON GROVE BUTTERCUP 317 VG86 - See lot 48						

Buyer:\$

LOT 51

LEMON GROVE BUTTERCUP 358

Reg: 142406 DOB: 25/4/13 Tattoo: CRC 393

sire	FIELDHOUSE REDLOU (HF) - See lot 45						
dam	LEMON GROVE BUTTERCUP 326 GP						
	42	9620	296	3.1	254	3.7	305 110
2nd sire	PANORAMA ARAMIS						
2nd dam	LEMON GROVE BUTTERCUP 261 VG - See lot 48						

Buyer:\$

LOT 52

LEMON GROVE BUTTERCUP 357

Reg: 142404 DOB: 21/4/13 Tattoo: CRC 391

sire	LEMON GROVE SUNSET DUKE-ET - See lot 14						
dam	LEMON GROVE BUTTERCUP 331						
	30	8558	275	3.2	315	3.6	348
2nd sire	BLACKWOOD PARK BLITZ						
2nd dam	LEMON GROVE BUTTERCUP 296 VG88						
	69	14608	484	3.3	544	3.7	390 131
3rd dam	Lemon Grove Buttercup 265 GP						
	128	10032	319	3.2	372	3.7	305

Buyer:\$

LOT 53

LEMON GROVE BUTTERCUP 366

Reg: 144256 DOB: 12/2/14 Tattoo: CRC 424

sire	LEMON GROVE BUTTLER-ET - See lot 23						
dam	LEMON GROVE BUTTERCUP 324 GP						
	40	9252	298	3.2	330	3.6	361
2nd sire	LEMON GROVE KAKADU						
2nd dam	LEMON GROVE BUTTERCUP 301 GP						
	56	10111	325	3.2	344	3.4	330
3rd sire	Faber (HF)						

Buyer:\$

LOT 54

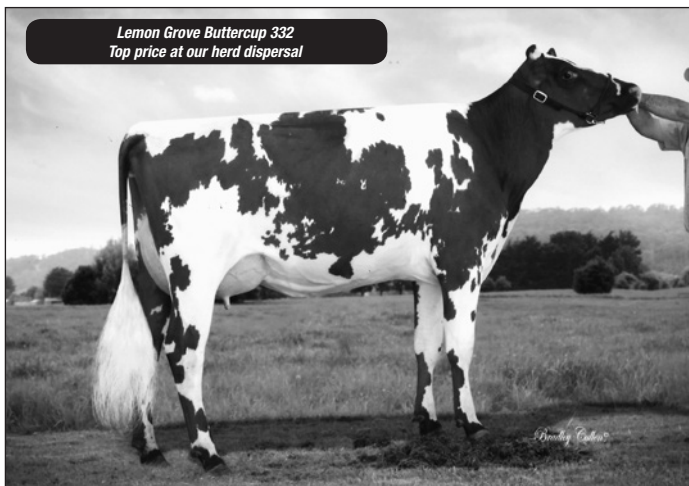
LEMON GROVE PRINCESS 783

Reg: 140813 DOB: 27/7/12 Tattoo: CRC 371

- 1st under 12mths IDW 2013
- 3rd 18mths IDW 2014

sire	LEMON GROVE KAKADU - See lot 5						
dam	LEMON GROVE PRINCESS 756 VG87						
	54	13095	412	3.1	438	3.3	364 129
	68	7884	242	3.0	281	3.6	190 cont
	when sold at our herd dispersal						
2nd sire	FABER						
2nd dam	LEMON GROVE PRINCESS 732 VG87						
	34	9964	313	3.1	386	3.9	305 148
	Broke Snr 2 National Prod Record for Milk & Protein						
	47	9225	295	3.2	331	3.6	305 139
	86	10151	342	3.4	402	4.0	305 115
	107	11444	350	3.1	350	3.4	305 108
	127	10936	338	3.1	385	3.5	290 111
	• 2nd 2yrs in milk IDW 2004 • 2nd 3yrs in milk IDW 2005						
	by Navilloween Tenor - Champion Bull Brisbane Royal,						
	Sydney Royal 7 times and Melbourne Royal						
3rd sire	Navilloween Tenor						
3rd dam	Lemon Grove Princess 695-ET VG86						
	107	7869	250	3.2	282	3.6	305

Lemon Grove Buttercup 332
Top price at our herd dispersal



Lemon Grove Princess 783 - Lot 54





Lemon Grove Princess 732 VG - 2nd dam of lots

4th dam Lemon Grove Princess 647 VG88
 • Champion Cow Melbourne Royal
 • 1st Best Udder Sydney Royal
 5th dam Lemon Grove Princess 600 VG88
 • Res Intermediate Champion Sydney Royal

Buyer:\$

LOT 55 LEMON GROVE PRINCESS 788

Reg: 144235 DOB: 26/9/13 Tattoo: CRC 403
 sire LEMON GROVE KAKADU - See lot 5
 dam LEMON GROVE PRINCESS 756 VG87 - See lot 54

Buyer:\$

LOT 56 LEMON GROVE PRINCESS 787

Reg: 142407 DOB: 29/4/13 Tattoo: CRC 394
 sire LEMON GROVE SUNSET DUKE-ET - See lot 14
 dam LEMON GROVE PRINCESS 768
 29 12239 371 3.0 407 3.3 340 135
 2nd sire LEMON GROVE RELIX
 2nd dam LEMON GROVE PRINCESS 756 VG87 - See lot 54

Buyer:\$

LOT 57 LEMON GROVE PRINCESS 780

Reg: 140805 DOB: 23/3/12 Tattoo: CRC 356
 P/W Llandovery Jets Vigil from 16/2/14 PTIC
 sire PANORAMA ROYAL TREBLE - See lot 4
 dam LEMON GROVE PRINCESS 751 VG
 65 11584 373 3.2 418 3.6 322 119
 2nd sire FABER
 2nd dam LEMON GROVE PRINCESS 730 VG
 7 lacts: 53578 Ltrs - 1755 kgsP - 1947 kgsF
 • 5th 2yrs in milk IDW 2004

Buyer:\$



Lemon Grove Princess 716

LOT 58

LEMON GROVE PRINCESS 781

Reg: 140832 DOB: 27/3/12 Tattoo: CRC 359
 P/W Llandovery Jets Vigil from 16/2/14 PTIC
 sire LEMON GROVE SUNSET DUKE-ET - See lot 14
 dam LEMON GROVE PRINCESS 764 GP83
 49 4082 126 3.0 141 3.6 140 cobnt
 when sold at our herd dispersal
 2nd sire GLENBROOK KOSCIUSKO
 2nd dam LEMON GROVE PRINCESS 730 VG - See lot 57

Buyer:\$

LOT 59

LEMON GROVE PRINCESS 790

Reg: 144244 DOB: 15/11/13 Tattoo: CRC 412
 sire LEMON GROVE BELAGIO - See lot 2
 dam LEMON GROVE PRINCESS 764 GP83 - See lot 58

Buyer:\$



Lemon Grove Princess 779 - Lot 60

LOT 60

LEMON GROVE PRINCESS 779

Reg: 140828 DOB: 22/2/12 Tattoo: CRC 354
 P/W Llandovery Jets Vigil from 16/2/14 PTIC
 sire LEMON GROVE SUNSET DUKE-ET - See lot 14
 dam LEMON GROVE PRINCESS 734 VG87
 63 10536 343 3.3 385 3.7 322 126
 76 10926 348 3.2 425 3.9 325 109
 89 10342 330 3.2 392 3.8 325 108
 113 12824 384 3.0 475 3.7 250 116
 • Res Champion Heifer IDW 2007
 2nd sire LEMON GROVE BUMPER
 2nd dam LEMON GROVE PRINCESS 720
 3rd dam Lemon Grove Princess 684 VG

Buyer:\$

LOT 61

LEMON GROVE PRINCESS 782

Reg: 140807 DOB: 26/5/12 Tattoo: CRC 364
 P/W Llandovery Jets Vigil from 16/2/14 PTIC
 sire LEMON GROVE KAKADU - See lot 5
 dam LEMON GROVE PRINCESS 728 VG86
 81 11954 388 3.2 479 4.0 391 113
 Over 95,000 litres lifetime
 2nd sire LEMON GROVE BYGOLD-ET
 2nd dam LEMON GROVE PRINCESS 719 GP
 32 5384 159 2.8 183 3.3 305
 • 1st 2yrs dry IDW 2001
 3rd dam Lemon Grove Princess 698 VG87
 53 7504 218 2.9 276 3.7 305 105

Buyer:\$



LOT 62 LEMON GROVE PRINCESS 778
 Reg: 140827 DOB: 29/1/12 Tattoo: CRC 353
 P/W Llandovery Jets Vigil from 16/2/14 PTIC
LEMONGROVE SUNSET DUKE-ET - See lot 14
LEMONGROVE PRINCESS 753 VG85
 52 7297 219 3.0 251 3.4 311
2nd sire PANORAMA ROYAL TREBLE
2nd dam LEMON GROVE PRINCESS 725 VG
 96 7736 238 3.1 302 3.9 305
3rd dam Lemon Grove Princess 701-ET VG85
 67 7182 234 3.3 268 3.7 305

Buyer:\$

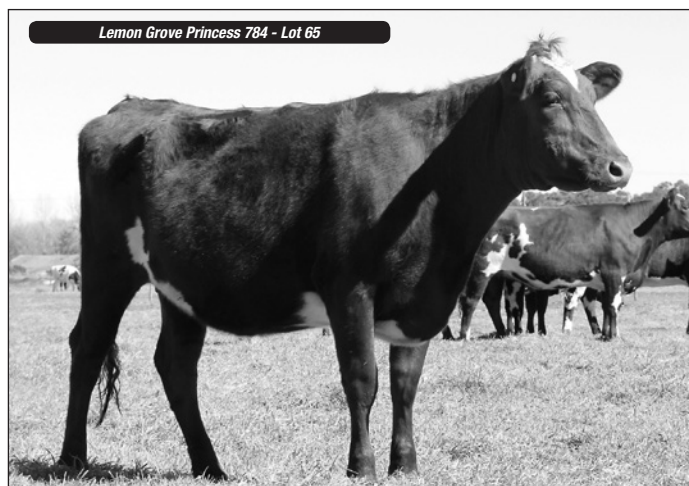
LOT 63 LEMON GROVE PRINCESS 785
 Reg: 142393 DOB: 12/11/12 Tattoo: CRC 380
 P/W Lemon Grove Hoffman from 8/8/14
LEMONGROVE KAKADU - See lot 5
LEMONGROVE PRINCESS 749 VG87
 52 10483 350 3.3 342 3.3 303 110
 62 12783 422 3.3 467 3.7 354 127
 75 10814 351 3.2 404 3.7 304 114
 • 1st 2yrs in milk & Best Udder IDW 2009 • 1st 3yrs dry IDW 2010
2nd sire FABER
2nd dam LEMON GROVE PRINCESS 725 VG - See lot 62

Buyer:\$

LOT 64 LEMON GROVE PRINCESS 791
 Reg: 144246 DOB: 29/11/13 Tattoo: CRC 414
LEMONGROVE KAKADU - See lot 5
LEMONGROVE PRINCESS 749 VG87 - See lot 63

Buyer:\$

LOT 65 LEMON GROVE PRINCESS 784
 Reg: 142387 DOB: 27/9/12 Tattoo: CRC 374
 P/W Lemon Grove Hoffman from 8/8/14
PANORAMA ROYAL TREBLE - See lot 4



dam LEMON GROVE PRINCESS 738 VG
 95 11133 335 3.0 382 3.4 305
2nd sire LEMON GROVE BUMPER
2nd dam LEMON GROVE PRINCESS 727 GP
 5 Lacts: 32,621 Litres - 1051 kgsP - 1294 kgsF
3rd dam Lemon Grove Princess 693-ET VG86
4th dam Lemon Grove Princess 647 VG88
 • Champion Cow Melbourne Royal
 • 1st Best Udder Sydney Royal
5th dam Lemon Grove Princess 600 VG88
 • Res Intermediate Champion Sydney Royal

Buyer:\$

LOT 66 LEMON GROVE PRINCESS 786
 Reg: 142395 DOB: 12/12/12 Tattoo: CRC 382
 P/W Lemon Grove Hoffman from 8/8/14
PANORAMA ROYAL TREBLE - See lot 4
LEMONGROVE PRINCESS 759 VG87
 51 8678 269 3.1 331 3.8 339
2nd sire LLANDOVERY JINNY'S EMPIRE
2nd dam LEMON GROVE PRINCESS 740 GP
 71 10676 338 3.2 373 3.5 305
3rd sire Sunny View Princess Mario
3rd dam Lemon Grove Princess 692 VG88
 123 9655 283 2.9 358 3.7 292 135

Buyer:\$

LOT 67 LEMON GROVE PRINCESS 789
 Reg: 144238 DOB: 17/9/13 Tattoo: CRC 406
LEMONGROVE SUNSET DUKE-ET - See lot 14
LEMONGROVE PRINCESS 770 GP83
 32 5394 158 3.0 189 3.5 199 cont
 when sold at our herd dispersal
2nd sire LEMON GROVE RELIX
2nd dam LEMON GROVE PRINCESS 759 VG87 - See lot 66

Buyer:\$

LOT 68 LEMON GROVE PRINCESS 792
 Reg: 144251 DOB: 31/12/13 Tattoo: CRC 419
LLANDOVERY JETS VIGIL-ET - See lot 9
LEMONGROVE PRINCESS 772
 28 2764 85 3.1 102 3.7 95 cont
 when sold at our herd dispersal
2nd sire LEMON GROVE RELIX
2nd dam LEMON GROVE PRINCESS 760 VG86
 59 8589 250 3.0 357 4.1 196 cont
 Sold for \$5000 to Glenbrook, SA at our herd dispersal
3rd sire Llandovery Jinny's Empire
3rd dam Lemon Grove Princess 743
 50 9789 321 3.3 370 3.8 305 109
 • 1st 3yrs Dry IDW 2008

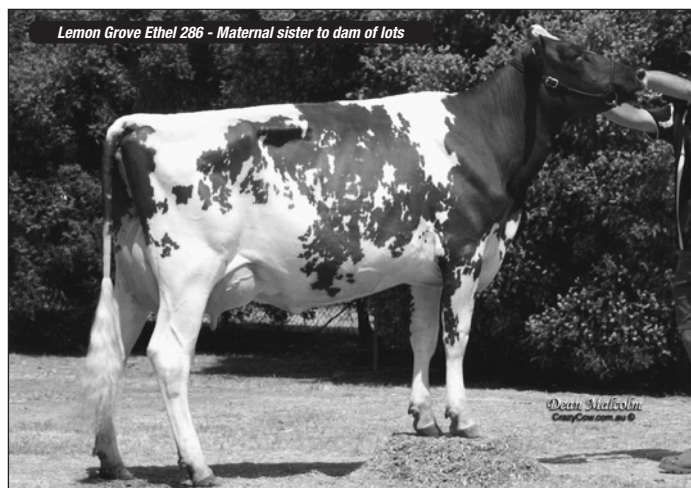
Buyer:\$

LOT 69 LEMON GROVE PRINCESS 793
 Reg: 144255 DOB: 4/2/14 Tattoo: CRC 423
LLANDOVERY JETS VIGIL-ET - See lot 9
LEMONGROVE PRINCESS 774 GP81
 Sold fresh on 1st lact at our herd dispersal
2nd sire LEMON GROVE SUNSET DUKE-ET
2nd dam LEMON GROVE PRINCESS 761 VG86
 44 11240 367 3.3 422 3.8 388 123
3rd sire Lemon Grove Kakadu
3rd dam Lemon Grove Princess 750 GP
 41 8900 285 3.2 289 3.2 355

Buyer:\$

LOT 70 LEMON GROVE PRINCESS 795
 Reg: 144263 DOB: 6/3/14 Tattoo: CRC 431
LEMONGROVE BUTTLER-ET - See lot 23
LEMONGROVE PRINCESS 761 VG86 - See lot 69

Buyer:\$



Lemon Grove Ethel 286 - Maternal sister to dam of lots



Wilmington Beauty 28 VG87

LOT 71

LEMON GROVE PRINCESS 794

Reg: 144260 DOB: 6/3/14 Tattoo: CRC 428

OVENSDALE SCARLETS MARCEL - See lot 7

sire

dam

LEMON GROVE PRINCESS 763

27 13850 493 3.6 582 4.2 791

2nd sire

LEMON GROVE BUTTLER-ET

2nd dam

LEMON GROVE PRINCESS 724 GP

92 12908 413 3.2 479 3.7 388 145

3rd sire Venvale Parkes-AI-ET

3rd dam Lemon Grove Princess 704 VG86

Buyer:\$

LOT 72

LEMON GROVE ETHEL 301

Reg: 140811 DOB: 4/7/12 Tattoo: CRC 368

P/W Lemon Grove Hoffman from 8/8/14

GLENBROOK KOSCIUSKO ABV +519 litres +106 Type

sire

dam

LEMON GROVE ETHEL 297

46 9884 301 3.0 370 3.7 536

2nd sire

LEMON GROVE BYGOLD-ET

2nd dam

LEMON GROVE ETHEL 283 VG88

93 10126 323 3.2 349 3.4 385

3rd dam

Lemon Grove Ethel 281 VG87

84 10532 327 3.1 369 3.5 280 123

Buyer:\$

LOT 73

LEMON GROVE ETHEL 302

Reg: 144239 DOB: 18/9/13 Tattoo: CRC 407

LEMON GROVE KAKADU - See lot 5

sire

dam

LEMON GROVE ETHEL 283 VG88 - See lot 72

Buyer:\$

LOT 74

LEMON GROVE BEAUTY 22

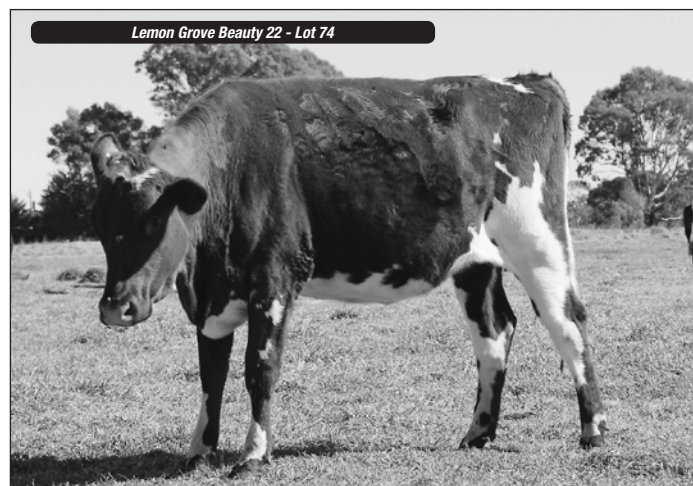
Reg: 140804 DOB: 16/1/12 Tattoo: CRC 352

P/W Llandovery Jets Vigil from 16/2/14 PTIC

PATIENCE SHOTLINE CONTENDER-RED EX95

Sire of 31 EX Dtrs in Canada

sire



Lemon Grove Beauty 22 - Lot 74

dam

LEMON GROVE BEAUTY 11 VG87

136 7887 245 3.1 275 3.5 387

2nd sire

LEMON GROVE BUTTLER-ET

2nd dam

LEMON GROVE BEAUTY 9 GP

3rd sire

Wilmington Kittys Reflect

3rd dam

Wilmington Beauty 28 VG87

• Res Champion Cow Melbourne Royal 1992

• Junior Champion Adelaide Royal 1989

• Res Junior Champion Melbourne Royal 1989

• 1st 4yrs in milk Melbourne and Shepparton 1990

• 1st 5yrs in milk Melbourne and Shepparton 1991

4th dam

Wilmington Beauty 10 vg88

6th dam

Tabbagong Beauty 214

• Many Champions, etc

Buyer:\$

LOT 75

LEMON GROVE BEAUTY 26

Reg: 142399 DOB: 11/2/13 Tattoo: CRC 386

LEMON GROVE KAKADU - See lot 5

sire

dam

LEMON GROVE BEAUTY 17 GP

35 8035 250 3.1 255 3.2 402

2nd sire

LEMON GROVE BUTTLER-ET

2nd dam

LEMON GROVE BEAUTY 12 VG87

101 12488 385 3.1 455 3.6 314 121

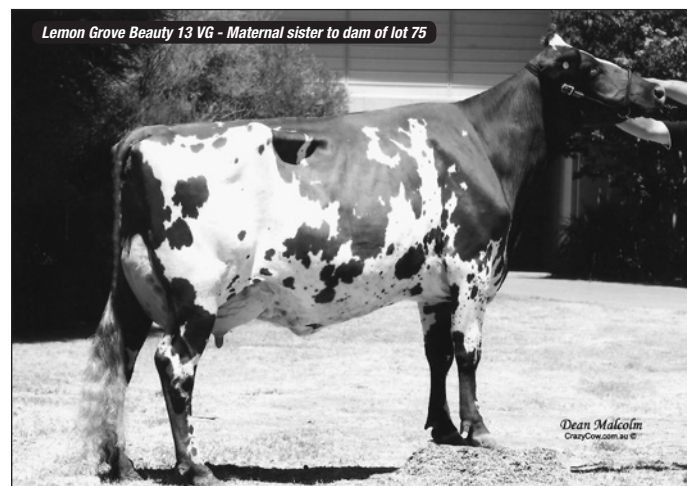
3rd sire

Helix GG

3rd dam

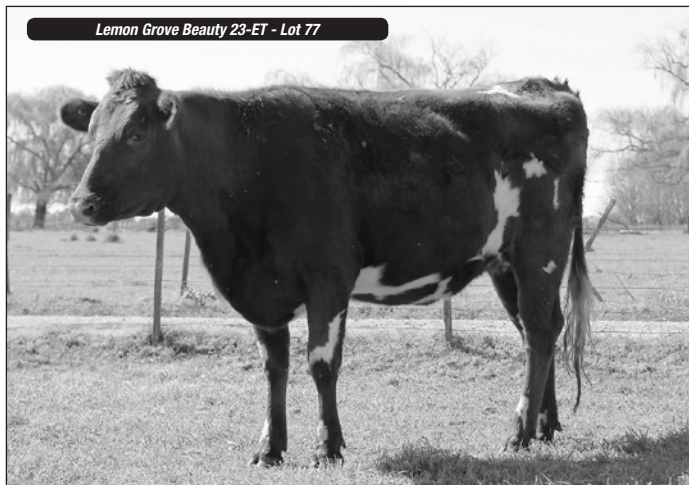
Lemon Grove Beauty 10 VG86

Buyer:\$



Lemon Grove Beauty 13 VG - Maternal sister to dam of lot 75

Lemon Grove Beauty 23-ET - Lot 77



LOT 76

LEMON GROVE MYRA 9

Reg: 140825 DOB: 2/1/12 Tattoo: CRC 349

P/W Llandovery Jets Vigil from 16/2/14 PTIC

sire LEMON GROVE SUNSET DUKE-ET - See lot 14

dam LEMON GROVE MYRA 3 VG

85 8454 258 3.1 317 3.7 334

2nd sire LEMON GROVE BUMPER

2nd dam LEMON GROVE MYRA 2 VG

89 5988 198 3.3 232 3.9 305

3rd sire Lemon Grove Blazing Promise-ET

3rd dam Wilmington Muyra 20 VG

23 6644 200 2.9 237 3.5 305

Buyer:\$

LOT 77

LEMON GROVE BEAUTY 23-ET

Reg: 140808 DOB: 29/5/12 Tattoo: CRC 365

P/W Llandovery Jets Vigil from 16/2/14 PTIC

sire HELIX GG

The best red outcross sire used at Lemon Grove. Sire of Ruth 146 and Margaret 162, etc

dam KURRAROO BEAUTY 19 VG87

59 10841 344 3.2 352 3.2 334 103

Top priced cow Kurraroo Dispersal sale

2nd sire LEMON GROVE BUTTLER-ET

2nd dam KURRAROO BEAUTY 15

Buyer:\$

LOT 78

LEMON GROVE BEAUTY 25-ET

Reg: 140810 DOB: 21/6/12 Tattoo: CRC 367

P/W Llandovery Jets Vigil from 16/2/14 PTIC

sire HELIX GG - See lot 77

dam KURRAROO BEAUTY 19 VG - See lot 77

Buyer:\$

LOT 79

LEMON GROVE VIOLET 4

Reg: 142392 DOB: 11/11/12 Tattoo: CRC 379

P/W Lemon Grove Hoffman from 8/8/14

sire FIELDHOUSE REDLOU (HF) - See lot 45

dam KURRAROO VIOLET 202 GP

32 6584 209 3.2 214 3.3 333

2nd sire KURRAROO GEMS BUDDY

2nd dam KURRAROO VIOLET 185

Buyer:\$

LOT 80

LEMON GROVE VIOLET 8

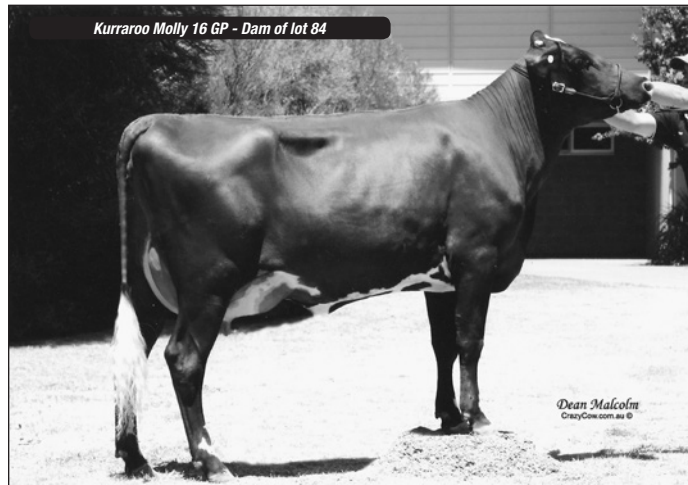
Reg: 144266 DOB: 17/3/14 Tattoo: CRC 434

sire LEMON GROVE KAKADU - See lot 5

dam KURRAROO VIOLET 202 GP - See lot 79

Buyer:\$

Kurraroo Molly 16 GP - Dam of lot 84



LOT 81

LEMON GROVE VIOLET 5

Reg: 142398 DOB: 6/1/13 Tattoo: CRC 385

sire FIELDHOUSE REDLOU (HF) - See lot 45

dam KURRAROO VIOLET 199 GP

38 7084 228 3.2 245 3.5 372

2nd sire KURRAROO GEMS BUDDY

2nd dam KURRAROO VIOLET 178

Buyer:\$

LOT 82

LEMON GROVE VIOLET 7

Reg: 144265 DOB: 18/3/14 Tattoo: CRC 433

sire LEMON GROVE KAKADU - See lot 5

dam KURRAROO VIOLET 199 GP - See lot 81

Buyer:\$

LOT 83

LEMON GROVE VIOLET 6

Reg: 144264 DOB: 17/3/14 Tattoo: CRC 432

sire FIELDHOUSE REDLOU (HF) - See lot 45

dam KURRAROO VIOLET 204 G

31 7572 247 3.3 236 3.1 323

2nd sire KURRAROO GEMS BUDDY

2nd dam KURRAROO VIOLET 191

3rd sire Glenbrook Buttercups Design

Buyer:\$

LOT 84

LEMON GROVE MOLLY

Reg: 142388 DOB: 27/9/12 Tattoo: CRC 375

P/W Lemon Grove Hoffman from 8/8/14

sire FIELDHOUSE REDLOU (HF) - See lot 45

dam KURRAROO MOLLY 16 GP

65 8636 285 3.3 335 3.9 350

2nd sire KURRAROO VIOLETS MASTER

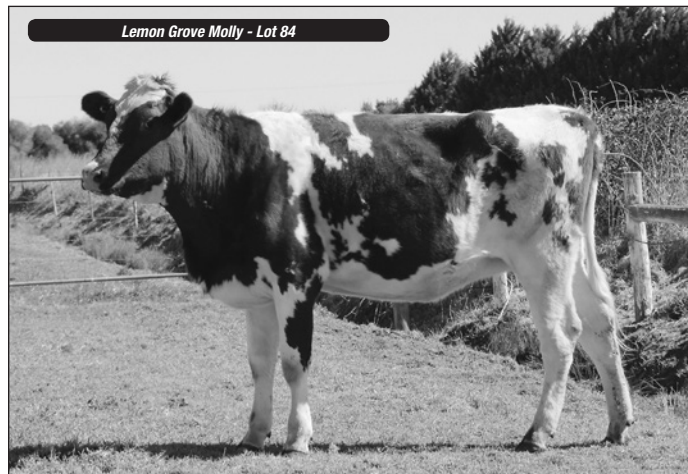
2nd dam KURRAROO MOLLY 15

3rd sire Lemon Grove Buttler-ET

3rd dam Kurraroo Molly 4 VG

Buyer:\$

Lemon Grove Molly - Lot 84



LOT 85**LEMON GROVE LAURA 3**

Reg: 144249 DOB: 12/12/13 Tattoo: CRC 417

sire Llandovery JETS VIGIL-ET - *See lot 9*

dam LEMON GROVE LAURA 2 GP82

27 3126 95 3.1 114 3.6 113 cont

when sold at our herd dispersal

2nd sire PATIENCE SHOTLINE CONTENDER-RED

2nd dam KURRAROO LAURA 8 GP

43 7062 238 3.4 222 3.1 296

Buyer:\$

LOT 86**LEMON GROVE IDA 4**

Reg: 144258 DOB: 17/2/14 Tattoo: CRC 426

sire FIELDHOUSE REDLOU (HF) - *See lot 45*

dam KURRAROO IDA 81 G

57 6598 227 3.4 221 3.3 374

2nd sire KURRAROO MOLLYS PRIDE

2nd dam KURRAROO IDA 75

Buyer:\$

LOT 87**Unreg Holstein Heifer**

DOB: 26/1/12 P/W Vigil from 16/2/14 PTIC

sire AULDREEKI ADDISON VACUM APR +159

dam LEMON GROVE BOSTON QUENELLE VG86

141 9052 278 3.0 361 4.0 337

2nd dam LEMON GROVE MASON QUENELLE VG87

3rd dam Paringa Monitor Quenelle VG87

4th dam Paringa Enhancer Queen VG8

5th dam Wiabuna Star Quin (T) VG89 STP 4*

6th dam Wiabuna Kriss Quette VG86 4*

7th dam Paringa Majestic Queen VG89 SBC

Buyer:\$

LOT 88**Unreg Holstein Heifer**

DOB: 19/3/12 P/W Vigil from 16/2/14 PTIC

sire VACUM

dam LEMON GROVE IRON POSCH 2 VG85

85 9288 285 3.1 295 3.2 317

2nd dam LEMON GROVE SEBASTIAN POSCH EX2E

9723 290 365 305

4th dam Dalrossie Perhaps Posch VG85

6th dam Dalrossie Proud Posch VG86

• Res Intermediate Champion Sydney Royal

Buyer:\$

LOT 89**Grade X Bred Heifer**

DOB: 30/3/12 P/W Vigil from 16/2/14 PTIC

sire LEMON GROVE SUNSET DUKE - *See lot 14*

dam LEMON GROVE JOCKSTAR ERIN GP84 (HF)

48 12477 376 3.0 469 3.7 329

2nd dam LEMON GROVE STAR ERIN-ET VG88

89 14724 435 3.0 530 3.6 382 121

3rd dam Lemon Grove SW Eclipse VG88

4th dam Paringa Ned Eclipse VG87

5th dam Holly Sovereign Evonne VG88

6th dam Wiabuna Kriss Shona EX3E STP 18*

7th dam Wiabuna Majestic Susan (T) VG88 10*

Buyer:\$

LOT 90**Grade X Bred Heifer**

DOB: 29/3/12 P/W Vigil from 16/2/14 PTIC

sire LEMON GROVE SUNSET DUKE - *See lot 14*

dam by Kakadu

2nd dam by Beorky

bred down from Paringa Boston Europa EX

Buyer:\$

**LOT 91****Unjoined Heifer** DOB: 8/4/13sire LEMON GROVE SUNSET DUKE - *See lot 14*

dam LEMON GROVE JACKAROO POSCH GP82 (HF)

30 7880 237 3.0 292 3.7 312

2nd dam LEMON GROVE IRON POSCH 2 VG85 - *See lot 88*

Buyer:\$

EMBRYOS**LOT 92****Package of 8**

DOMESTIC ONLY

sire PANORAMA ARAMIS

dam LEMON GROVE RUTH 154 VG

51 9227 316 3.4 386 4.2 286 132

V Prince from Ruth 146 EX - *See lot 21*

Buyer:\$

LOT 93**Package of 2**

DOMESTIC ONLY

sire SILVERLEIGH MONARCH

dam LEMON GROVE RUTH 154 VG - *See lot 92*

Buyer:\$

LOT 94**23 x Panorama Royal Treble**dam LEMON GROVE RUTH 154 VG - *See lot 92*

Buyer:\$

LOT 95**14 x Panorama Aramis**dam LEMON GROVE RUTH 154 VG - *See lot 92*

Buyer:\$

LOT 96**14 x Llandovery Verbs Viscount**dam LEMON GROVE RUTH 154 VG - *See lot 92*

Buyer:\$

Note: Lots 94, 95 & 96 EXPORT QUALIFIED

Stored at Global Reproductive Services

LOT 97**2 Embryos**

EXPORT QUALIFIED

dam 1 x Panorama Aramis 1 x Panorama Royal Treble

LEMON GROVE MARGARET 162 VG88

• Res Champion Cow IDW - *See lot 13*

Buyer:\$

LOT 98**3 Embryos**

DOMESTIC ONLY

sire GGHelix - *See lot 77*dam KURRAROO BEAUTY 19 VG87 - *See lot 77*

Buyer:\$

LOT 99**150 Straws of Lemon Gove Buttler**

To be sold in lots of 25.



LIVESTOCK AUCTION TERMS AND CONDITIONS OF SALE

CHAPTER ONE - PRELIMINARY

1. (a) A vendor is bound by these terms and conditions by offering livestock for sale by auction.
- (b) An agent (which includes an auctioneer) is bound by these terms and conditions by conducting an auction sale.
- (c) A buyer is bound by these terms and conditions by bidding at auction.
2. (a) In these terms the expression auctioneer, agent, buyer and vendor respectively includes the servants, contractors, agents of each of them. The auctioneer, agent, buyer and vendor shall be wholly responsible for the acts and omissions of their respective servants, contractors and agents. The term "auctioneer" includes, so far as the law and context permits, the vendor's agent.
- (b) When used in these terms the expressions "companion animals" means all animals originating from the same property on a particular day. Where lots are split and sent to multiple establishments, then all of these animals shall be regarded as companions.
3. The following applies in interpreting these terms and conditions:
 - (a) The following words have the following meanings:

Fees means all levies, charges, fees, costs and other expenses incurred or relating to these terms and conditions and the sale and purchase of livestock including, without limitation, transaction levies, yard and weigh dues, cartage, advertising and rebates, and whether paid for, or incurred, by the agent;

Livestock means animals auctioned pursuant to these terms and conditions; and

Price means the amount at which the lot has been sold to the buyer referred to in clause 7 of these terms and conditions
 - (i) plus any Fees and other expenses incurred in relation to the purchase of livestock that are payable by the buyer; and
 - (ii) plus any GST added in accordance with clause 12.
 - (b) These terms and conditions are subject to legislation or regulation in the State in which the auction is conducted and in the event of any conflict then the legislation or regulation will prevail. The provisions of these terms and conditions are in addition to, and do not derogate from, the duties and rights of vendors, agents and buyers set out in legislation and regulation in the State in which the auction is conducted.

CHAPTER TWO - STANDARD TERMS OF SALE

4. Subject to any reserve price, and to the right, prior to the fall of the hammer, of the vendor to withdraw any lot without declaring the reserve, the highest bidder shall be the buyer.
5. The auctioneer has the right to bid on behalf of the vendor provided that right is notified prior to the commencement of the sale and is subject to State law.
6. A bid cannot be made or accepted after the fall of the hammer unless, in accordance with clause 8, the auctioneer decides to put the lot up again.
7. The last price called by the auctioneer at the fall of the hammer shall be the amount at which the lot has been sold.
8. In the event of a disputed bid, the auctioneer is the sole arbitrator of the successful bidder or the auctioneer may decide to put the lot up again. The auctioneer's decision is final.
9. The auctioneer may refuse to accept any bid which, in the auctioneer's opinion, is not in the best interest of the vendor and need not give reasons for doing so.
10. A bidder shall be deemed to be a principal unless, prior to bidding, the bidder has given to the auctioneer a copy of written authority to bid for or on behalf of another person.
11. The successful bidder at a livestock auction sale must give to the auctioneer at the fall of the hammer:
 - (a) the purchaser's name; or
 - (b) the bid card number which identifies the purchaser; or
 - (c) the name of the person on whose behalf the successful bid was made; and
 - (d) the Property Identification Code (known as the "PIC") of destination.
12. The auction shall be conducted on the basis that the bid price shall be exclusive of Goods and Services Tax (GST). GST shall be added after the fall of the hammer for those sales subject to GST.
13. As soon as practicable after the fall of the hammer, the buyer shall if requested by the agent, sign the agreement for sale.
14. If a buyer does not comply with any of these terms and conditions, which includes the requirements of State law, any livestock knocked down to that buyer may be re-sold by public auction or private contract in whatever lots and manner the auctioneer decides. The re-sale may be with or without notice and shall be at the buyer's risk. The buyer is responsible for all loss and expense arising out of a re-sale and is not entitled to any resulting profit.
15. The buyer of livestock must pay the agent the full amount of the purchase price in immediate funds on receipt of a tax invoice. Payment is required prior to delivery unless some other time for payment is specified in a written agreement between the buyer and the auctioneer that was made before the fall of the hammer. If, before delivery, payment has not been made then clauses 20 to 23 apply.
16. No person may bid unless, prior to the commencement of the sale, that person has made arrangements satisfactory to the auctioneer for payment for livestock purchased. If bids in breach of this condition are inadvertently accepted, delivery shall not be given until the purchase money is paid and any law, rule or practice to the contrary is accordingly negated as far as possible.
17. (a) Cattle sold on a liveweight basis that are weighed pre-sale are at the risk and expense of the buyer upon the fall of the hammer.
- (b) Cattle sold on a liveweight basis that are weighed post-sale are at the risk and expense of the buyer immediately after weighing.
- (c) All livestock other than cattle sold on a liveweight basis are at the risk and expense of the buyer upon the fall of the hammer.
18. (a) Subject to this clause the sale is complete on the fall of the hammer.
- (b) The time for rejection is the time commencing at the fall of the hammer and ending at the first of:
 - (i) delivery is taken by a representative of the buyer;
 - (ii) departure of the animal from the purchaser's delivery pen; or
 - (iii) one hour after the last animal is:
 - a. in the case of pre-sale weighing, sold; or
 - b. in the case of post-sale weighing, weighed.
- (c) During the time for rejection the buyer may reject any animal which is lame, blind or diseased where that condition existed prior to the fall of the hammer but could not be reasonably observed when the animal was in the selling pen.
- (d) If the purchaser rejects an animal during the time for rejection then the sale of that animal is cancelled and the animal is returned to the vendor or sold on such terms as any buyer and the agent may agree, after the agent has disclosed the reason for rejection to that buyer.
- (e) This sub-clause applies only to cattle which are sold in Queensland at auction for slaughter. The agent has responsibility for the prevention of loss or escape (but not death, sickness or injury) of those cattle from the time of the fall of the hammer, through delivery to and from the scales, to the buyer's delivery pen and on to the buyer's nominated transport. This responsibility ends at the earlier of those cattle boarding the buyer's nominated transport or sunset on the day after the sale. This sub-clause does not apply if the agent makes an announcement to that effect prior to sale.
19. (a) Subject to the right of rejection in Clause 18, all conditions and warranties expressed or implied by law are hereby excluded from the sale to the extent that the law allows. All lots are open for inspection prior to the commencement of the sale and are sold with all faults, if any. No compensation shall be given for any faults, imperfections, errors of description, number in or of any lots sold or otherwise.
- (b) Any claim or objection arising out of an error or misdescription in the provision of relevant information in terms of legislation or regulation concerning the National Livestock Identification Scheme (NLIS) must be made by 5:00pm on the seventh day after the fall of the hammer. No

objection, requisition or claim against the vendor or agent in respect of such error or misdescription can be made after that time.

- (c) Any statements made by the vendor or the auctioneer whether in writing or orally to the effect that any female has been pregnancy tested or scanned positive shall mean and require only that a certificate in writing shall be supplied to the buyer signed by a qualified veterinary surgeon or certified scanner certifying that the said female has been tested or scanned on the date specified in the certificate and that in the opinion of the surgeon or scanner was pregnant on that date.
- (d) For slaughter cattle, the agent undertakes to make every reasonable effort to ensure that any NLIS cattle device number is transferred from the saleyard PIC to the purchaser's PIC on the NLIS database no later than midnight on the day of the sale.
- (e) For other slaughter livestock the agent undertakes to make every reasonable effort to ensure that the NLIS information is transferred from the saleyard PIC to the purchaser's PIC on the NLIS database no later than midnight on the day of the sale.
- (f) Where livestock have a food safety or market eligibility status derived from the National Vendor Declaration (NVD) and/or the NLIS/ERP database, the agent will inform the buyers by pre-sale catalogue and/or announce the status prior to the offering of those lots.
20. If delivery is made to, or possession obtained by, the buyer or its representative before full payment of the Price, then until full payment is received, the buyer:
 - (a) does not acquire title to the livestock;
 - (b) holds the livestock as bailee only for the vendor;
 - (c) must act in a fiduciary capacity in its relationship with the vendor;
 - (d) must store the stock separately or so that they are readily distinguishable from other livestock owned by the buyer;
 - (e) is responsible for the safety and well being of the livestock;
 - (f) may make a bona fide sale for market value of any or all of the livestock. As between the buyer and the subsequent buyer, the sale shall be made by the buyer in its own name and not as agent for the vendor, however as between the vendor and buyer, the sale shall be made as bailee and agent for the vendor; and
 - (g) must keep and account for the proceeds of any subsequent sale separately from its other money and hold those proceeds, together with the benefits of any rights against subsequent buyers, on trust for the vendor.
21. In addition to clause 20, if payment is not made according to clause 15, but delivery has been made to, or possession obtained by, the buyer or its representative:
 - (a) The vendor or its agent may repossess and resell the livestock and enter property owned or occupied by the buyer or its representative if necessary to do so; and
 - (b) Interest may be charged at the rate usually charged by the agent for overdue accounts on any amounts which remain owing at any time.
22. The buyer may not make any claim against the vendor for actions by the vendor or its agent under clauses 20 or 21 and indemnifies the vendor and its agent against any loss, damage, costs, expenses, penalties, fines or claims suffered by the vendor, the agent or any person or entity arising from the vendor exercising its rights under clauses 20 or 21.
- 23.1. Clause 23 applies whenever the agent pays the vendor before being paid by the buyer, which the agent is not bound to do. The agent is then the del credere agent of the vendor at law.
- 23.2. The vendor hereby gives notice to the buyer of the assignments referred to in clause 23.3.
- 23.3. When this clause applies, in addition to any rights of the agent that arise by operation of the law, the parties agree that, subject to clause 23.6 the agent is subrogated to all rights of the vendor under these terms and conditions against the buyer.
- 23.4. Title to the livestock does not pass to the agent or a nominee of the agent unless the agent, by written notice to the vendor, notifies the vendor that it is to be transferred to the agent or a nominee of the agent.
- 23.5. The vendor acknowledges that the agent may take enforcement, repossession or other action to recover any livestock for which the buyer has not paid in full, or the Price of such livestock, owing by the buyer under these terms and conditions:
 - (a) when this clause does not apply, as agent of the vendor (including by reselling the livestock); and
 - (b) when this clause applies, on the agent's own behalf exercising the rights of the vendor by subrogation or assignment under these terms and conditions (whether in the vendor's name or not) and, where title to the livestock has not passed to the agent, by selling the livestock as agent of the vendor without the agent having to account to the vendor for the proceeds of sale.
- 23.6. The agent may at any time, assign, transfer, securitise or otherwise dispose of all or any of its rights under these terms and conditions and any debts created pursuant to it (including, without limitation, the rights assigned to it under clause 23.3).
- 23.7. The vendor hereby irrevocably appoints the agent as the vendor's attorney to:
 - (a) do at any time and in any manner as the agent thinks fit all acts necessary or desirable to perfect or improve the rights and interests afforded, or intended to be afforded, to the agent under these terms and conditions; and
 - (b) appoint one or more sub-attorneys to do anything that the agent may do as the vendor's attorney.
- 23.8. These terms and conditions do not render the agent liable to the buyer as vendor nor entitle the buyer to set off against the agent any right the buyer may have against the vendor or otherwise.
- 23.9. The buyer acknowledges that the provisions of this clause 23 are intended solely for the benefit of the agent (and its assigns) and the vendor. The liabilities and obligations of the buyer will not be in any way affected:
 - (a) by this clause 23, other than as it expressly provides; or
 - (b) by the failure of the agent or the vendor or either of them to comply with the terms of this clause 23.
- 23.10. The buyer must pay all amounts payable to the vendor or the agent under these terms and conditions without any deduction, withholding, set off or counterclaim whatsoever, whether the benefit of a deduction, withholding, set off or counterclaim is alleged to exist in favour of the buyer as against the vendor or the agent in any capacity whatsoever or any other person including any assignor of the vendor's or the buyer's interests under these terms and conditions.
24. (a) The agent agrees that he is liable to pay to the vendor the Price, less such commission as is agreed between the vendor and the agent, and in the absence of any agreement such amount as is reasonable, and the Fees that are payable by the vendor that were incurred by the agent on behalf of the vendor in relation to the sale of the livestock.
- (b) In the event that the buyer pays the Price or part of it direct to the vendor then the agent has no liability to the vendor for the amount of such payment. Further, if the agent pays the vendor any amount which the buyer also pays direct to the vendor in respect of the same livestock, then the vendor must repay the agent that amount and the agent may debit that amount to an account held in the name of the vendor by the agent.
- (c) Regardless of whether or not a sale has occurred the agent may, but is not under obligation so to do, instead of deducting payments owed to it by the vendor, debit the amount of the commission and fees to an account held in the name of the vendor by the agent.
25. (a) The auctioneer has been retained by the vendor as auctioneer for the purpose of selling the livestock comprised in the lots. The terms of engagement between the auctioneer and the vendor do not extend to the provision of advice by the auctioneer to the vendor in relation to the safety or otherwise of the sale ring, the saleyards and the surrounding environments.
- (b) The vendor, the agent and the buyer agree to comply with their several duties under the Australian Animal Welfare Standards and Guidelines for the Land Transport of Livestock and further to consign, manage, receive, transport and handle livestock in accordance with any other or additional requirements of animal welfare legislation specific to the jurisdiction in which livestock are consigned, managed, received, transported and handled in the course of the auction process.

CHAPTER THREE - VENDOR WARRANTY FOR CORRECT PRESENTATION AND DECLARATION

26. This chapter applies only in the case of livestock and their companion animals sold at auction for slaughter when the buyer is the slaughterer and the livestock are transported direct from the sale yard to the meatworks at which they are slaughtered. This chapter does not apply if the buyer is a trader who subsequently resells the livestock to a slaughterer. A slaughterer is any person who pays the AMPC Processor levy.
27. The warranty of a vendor is that livestock and their companion animals offered for sale at auction:
 - (a) pass DAFF and other regulatory authority requirements and inspections at the time of slaughter; (DAFF refers to the Federal Government Department of Agriculture, Fisheries and Forestry)
 - (b) are of merchantable quality;
 - (c) carry an NLIS device in accordance with State law;
 - (d) in the case where a representation has been made in the pre-sale catalogue that the livestock have particular characteristics or are fit for a particular purpose or market, and such representations are based on information in the NVD, the livestock will have those characteristics or will be fit for the particular purpose or market; and
 - (e) all information in any NVD provided by the vendor is true, complete and correct in all material respects.
28. In the event of a breach by the vendor of the vendor's warranty and provided such breach is notified by the buyer to the agent by 5:00pm on the 7th day after the fall of the hammer then the buyer is not liable to pay the portion of the Price of such of the vendor's livestock to which the breach applies.
29. However if the breach by the vendor is such that the livestock are not rejected outright but are instead downgraded then the buyer will pay the value of the livestock at their next highest and best use.
30. In the case of a breach by the vendor of the vendor's warranty then the vendor will also be liable to the buyer for any further losses which the buyer might establish but the buyer will take all reasonable steps in co-operation with the agent and vendor to mitigate both the effect of the breach and the amount of any loss.
31. Where a sentinel animal of a lot tests positive for chemical residue, or foreign material contamination and provided such test is certified and notified as required by these vendor warranty terms, then:
 - (a) the buyer will be entitled to delay payment for the price of all livestock in that lot only; or
 - (b) the vendor has the option, at the vendor's cost, of collecting the companion animals, if allowed by law; or of having the livestock slaughtered at which event the risk of further condemnations will be that of the vendor. Where product integrity is potentially jeopardised, the Processor has the right to refuse slaughter and send the livestock back to the consigning property at the vendor's cost.
32. The auctioneer is liable to the buyer in respect of any breach of the vendor's warranty arising out of:
 - (a) any error, by the auctioneer, of transcription of information from the NVD completed by the vendor to the pre-sale catalogue or the buyers post-sale summary;
 - (b) any failure by the auctioneer to notify the buyer, prior to bidding, of any breach by the vendor of the warranty of the vendor if the buyer establishes that the agent knew of such breach prior to the sale; and
 - (c) any failure by the auctioneer to announce prior to bidding, or disclose in the pre-sale catalogue, that the vendor has failed to provide a NVD that is complete in all material aspects.

CHAPTER FOUR - OWNERS RISK FOR CONDITION OF CATTLE

33. This chapter applies only in the case of cattle and their companion animals sold at auction for slaughter when the buyer is the slaughterer and the cattle are transported direct from the sale yard to the meatworks at which they are slaughtered. This chapter does not apply if the buyer is a trader who subsequently resells cattle to a slaughterer. A slaughterer is any person who pays the AMPC Processor levy.
34. Owners risk reflects the producer's responsibility to provide slaughter cattle for sale that are fit for human consumption. Cattle are fit for human consumption if they are not condemned as unfit by DAFF. Owners risk applies if the condemnation is due to a condition in the animal which the buyer establishes, by the DAFF certificate, existed prior to the fall of the hammer.
35. A buyer with the benefit of owners risk protection is not liable to pay the Price of that animal to the vendor. The buyer remains nevertheless liable for all costs incurred after the fall of the hammer in transport, slaughter, testing and disposal of the animal.
36. Owners risk protection is available to the buyer of cattle to which this chapter applies if all of the following are satisfied:
 - (a) a certificate is issued by DAFF which states the relevant NLIS RFID tag number and PIC, the date of the certificate, the reason for condemnation and that the reason for condemnation existed prior to the fall of the hammer;
 - (b) the certificate is received by the selling agent either in its original form or by fax by 5:00pm on the 7th day after the fall of the hammer; and
 - (c) if the condemnation is due to chemical residue the certificate follows testing in a DAFF approved laboratory which establishes maximum residue limits in excess of the Australian limit.
37. Owners risk does not apply, and the buyer must pay for the cattle, if the reason for condemnation is any of the following:
 - (a) bruising,
 - (b) fever,
 - (c) partial condemnation, or
 - (d) emaciation.

CHAPTER FIVE - NOTICES REQUIRED BY STATE LEGISLATION

NSW Legislation

Property, Stock and Business Agents Act 2002 Warnings

Penalties for collusive practices. It is an offence against the Property, Stock and Business Agents Act 2002 for a person to do any of the following as a result of a collusive practice, or to induce or attempt to induce another person by a collusive practice to do any of the following:

- (i) to abstain from bidding; or
- (ii) to bid to a limited extent only; or
- (iii) to do any other act that might prevent free and open competition.

Severe penalties may be imposed on persons convicted of collusive practices.

The auctioneer has the right to make one bid on behalf of the vendor if the auctioneer clearly and precisely announces that fact prior to the sale.

Tasmanian Legislation

An auctioneer conducting a public auction must not appear to acknowledge the making of a bid if no bid was made. A person must not participate in collusive practices by way of making or receiving an unlawful promise to abstain from bidding, not to bid except to a limited extent or do any other thing which may prevent free and open competition.

Western Australian Legislation

Auction Sales Act 1973 s31 NOTICE. It is an offence to:

- (i) induce or attempt to induce another person to abstain from bidding by means of a promise, expressed or implied, that the other person will have the right to elect to take over as buyer or to toss or draw lots to establish who is to become the owner;
- (ii) abstain or agree to abstain from bidding as a result of such a promise;
- (iii) knowingly enter or permit or cause to be entered in the auctioneer's record any name other than that of the actual successful bidder;
- (iv) enter in the auctioneer's record the name of the buyer other than that of the actual successful bidder; or
- (v) in the case of successful bidder supply wrong information as to the name of the buyer to the auctioneer or to any person, firm or corporation on whose behalf the sale is conducted.

The vendor, or any person on behalf of the vendor, or the auctioneer have the right to make no more than three bids.





Navilloween Tenor

Champion Brisbane Royal,
Sydney Royal (7 times), Melbourne Royal
and Kiama.

Lemon Grove Tenors Gift

Champion Bull Sydney Royal 1976



Lemon Grove Tenors Lad

Champion Bull Sydney Royal
1974 and 1975

We would like to take this opportunity to thank you for your company today and wish all purchasers every success with your animals. Please join us for drinks and hospitality after this historic event.

We hope you have a safe journey home.

Laurie, Sandra and family



A RURALCO PARTNER

DAIRY LIVESTOCK SERVICES

Tullamarine BC, PO Box 462, Tullamarine VIC 3043

**POSTAGE
PAID
AUSTRALIA**