

# ILLAWARRAS

## Queensland

Branch Secretary: Mrs Betty Ledger 0408 484 659

betty@illawarrasaust.com.au

www.illawarrasaust.com.au

## giving real farmers real benefits

### Michael Tuhan, Riversleigh Stud, Tatura, Vic

"Prior to 1990 my family ran a herd of grade Holstein-Friesians, purchasing our first Illawarra in 1990. We soon discovered Illawarras have much to offer, with management traits superior to the black & whites. Their remarkable ease of calving ability, and characteristic docile nature were immediately evident, whilst a high milk protein to fat ratio, and superior heat/sun tolerance also set them apart. We breed to produce commercially profitable cattle with good udders. Longevity is of paramount importance."



Myrtleholme Ailsa 14—JP Bourke & Co, Gladfield,  
Via Warwick, Qld. Shane 0437 661 189



Eachamvale CV Princess 7 VG87—Greg & Bronwyn English & Family,  
Malanda, Qld. Greg 0427 951 041

## real cows giving real farmers real benefits

### National Herd Recording Statistics Breed Summary 09-10

BREED	LTRS		FAT KGS		PROT KGS		TOTAL KGS	
	2009	2010	2009	2010	2009	2010	2009	2010
Holstein	7080	7087	279	278	233	232	512	510
Brown Swiss	6146	6245	260	256	214	214	474	470
<b>ILLAWARRA</b>	<b>6189</b>	<b>6379</b>	<b>249</b>	<b>254</b>	<b>206</b>	<b>212</b>	<b>455</b>	<b>466</b>
Jersey	5123	5168	250	250	192	192	442	442
Aust Red Breed	5650	5807	234	240	196	201	430	441
Guernsey	5309	5481	230	234	182	185	412	419
Ayrshire	5393	5505	223	225	181	186	404	411

# ILLAWARRAS

## Queensland

Branch Secretary: Mrs Betty Ledger 0408 484 659  
betty@illawarrasaust.com.au

### giving real farmers real benefits

- Components plus litres
  - Enduring dairy type—udders and feet that stand the test of time
  - Good-doing cattle for TMR or pasture based systems
  - Cross-breeding compatibility
  - Low maintenance and cost effective
  - End of life financial return
  - Great fertility
  - Calving Ease
  - Low stress calf raising
  - Quiet temperament
- # = PROFITABILITY

## Warren Doecke, Springvale, Murray Bridge, SA.

"My family and I began converting to organic farming following the purchase of our cropping/grazing property near Meningie. I knew that our Illawarra herd would convert easily to non-chemical farming practices due to the breed's hardy nature. Now fully certified we use only homeopathic & natural remedies for treating ailments such as mastitis, lameness or calf scours so the low maintenance of the Illawarras fits in perfectly with this farming practice. They are hardy, easy care animals whose ease of calving and excellent temperament does particularly well under our organic farming system."

**Semen for Sale: Llandovery Dyanic "Verydynamic"**  
**Sire: Red Monarch Dam: White Gates Dainty 13 vg88**



**\$11 incl GST per straw**

Life Time production:  
81285, 4.43%, 3603KgF,  
3.2%, 2700KgP

Daughters are extremely quiet  
and are always early in the  
dairy, with PI's up to 113.  
L-: Springvale Peach 8—  
Dynamic daughter.

**Ph Warren Doecke**  
**0417 804 663**  
**Murray Bridge SA**

## Your Source for the BEST ILLAWARRA Genetics OVENSDALE SCARLET MARCEL



Scarlet Dtr: Owned by Newton Family



Dam: Ovensdale Scarlet 99<sup>th</sup> - VG88



Scarlet Dtr: Owned by Newton Family

~No.1 Milk Production for all Red Breeds, Scarlet is one of the Best for Ligament Strength, Teat Placement and Protein. Offers great Type, Udders and Workabilities. ~Halls from a great cow family with his dam 2nd to the IDW Champion in the On Farm Challenge twice and next two dams have produced over 50,000 litres of life-time Production.

Sire: Marcel Red  
Dam: Ovensdale Scarlet 99<sup>th</sup> - VG88  
9144M 3.7% 342F 3.2% 294P  
MGS: Ovensdale Pearls Cass  
MGD: Ovensdale Scarlet 61 - VG86  
53638M 4.3% 2291F 3.4% 1843P

AUGUST ABV 2010

APR	Rel	ASI	P	P%	Milk	F	F%	Rel	Dtrs	Hds	Type	Mam	Rel	MS	Temp	Like	Rel
37	62	40	18	-0.23	1133	4	-0.63	69	35	15	109	108	55	103	104	104	63

## MYRTLEHOLME MITCH - ET

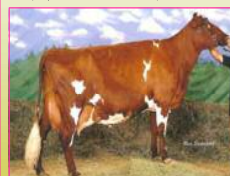


Sire: Silverleigh Churchill  
Dam: Myrtleholme Empress 32<sup>nd</sup> - EX91 3E  
305D 13472M 3.3% 444P 3.7% 500F  
MGS: Myrtleholme Kieran  
MGD: Myrtleholme Empress 29th  
362D 10966M 3.0% 326P 3.8% 418F

~Churchill son who descends from the Reserve All-Australian Champion - Myrtleholme Empress 32<sup>nd</sup> - EX91 3E  
~His dam was also crowned Queensland's Production Cow of the Year in 2009 - Lifetime Production 57,338 litres

Dam: Myrtleholme Empress 32<sup>nd</sup> - EX91 3E

## LLANDOVERY PRIDES PROPHET



Sire: Winganna Handsome Tulip  
Dam: Llandovery Futurities GE Pride - EX  
305D 10843M 3.93% 426F 3.10% 336P  
MGS: Llandovery Jeans Futurion  
MGD: White Gates GE Pride - ET VG88  
362D 10809M 3.90% 422F 3.28% 354P

~New Release Gold Label sire who descends from the 2009 IDW Champion and Intermediate Champion at IDW in 2005 - Llandovery Futurities GE Pride - EX.  
~Sired by Winganna Handsome Tulip who is currently the No.5 APR Illawarra bull & has an ASI of 90. He has created much interest since his daughters have calved in, even more so since a daughter won Reserve Intermediate Champion at IDW this year.



Agri-Gene Pty Ltd

123-125 Tone Road, Wangaratta Victoria 3677

Ph: 03 5722 2666 Fax: 03 5722 2777 Email: info@agrigene.com.au Website: www.agrigene.com.au



For all Illawarra info including genetics go to  
**www.illawarrasaust.com.au**